

Property & Public Services  
Property Records Division  
Yellow Medicine County, Minnesota  
I hereby certify that the within instrument  
was filed on January 22, 2019 at 9:30 AM

Janel Timm, Yellow Medicine County Recorder

By Kelly Krueger Deputy

# CERTIFICATE OF LOCATION OF GOVERNMENT CORNER

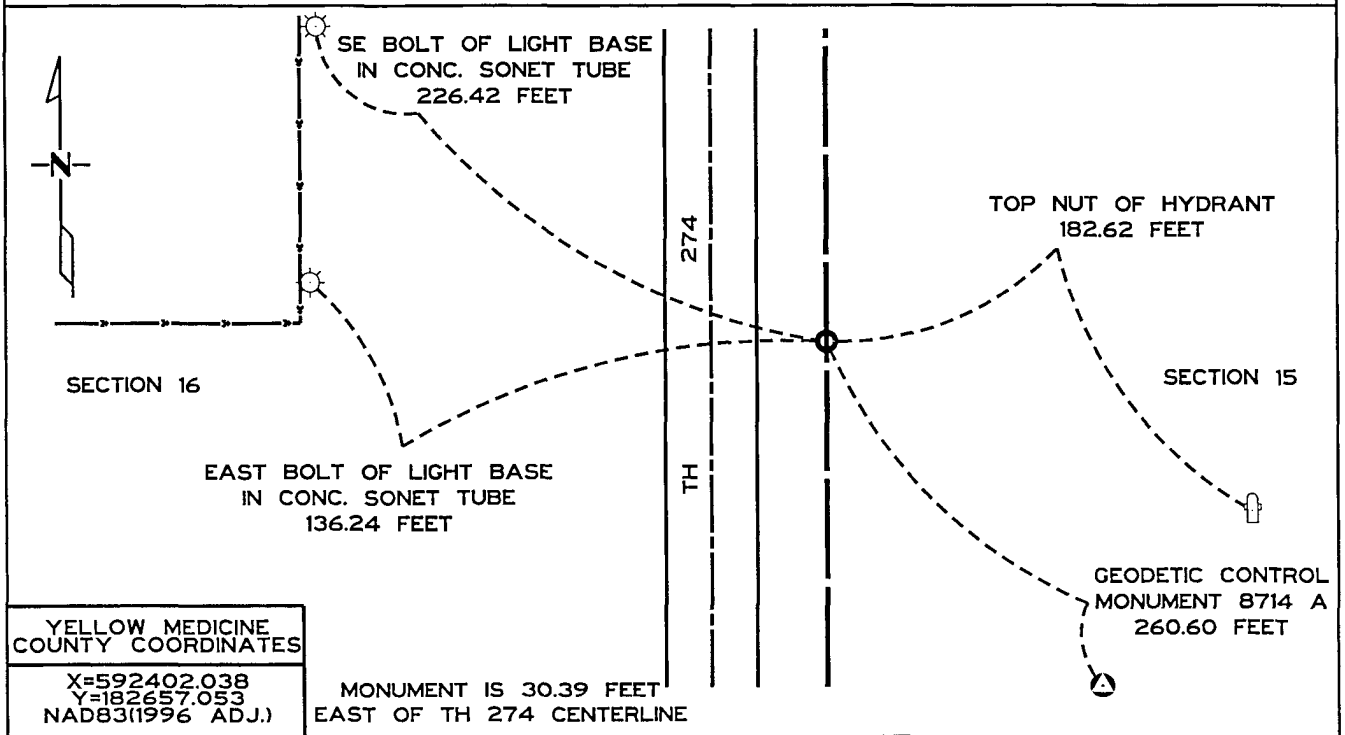
East Quarter Corner of Section 16, Township 115 N, Range 39 W  
5th Principal Meridian, State of Minnesota, County of Yellow Medicine

At the corner location shown on the sketch:

On Oct. 2, 2018 found a bent 3/4 inch iron pin down 1.75 feet  
DATE

left monument as found  lowered monument  removed monument (explain)

On Oct. 2, 2018 placed a MnDOT cast iron monument above a new 3/4 inch iron pin  
DATE



YELLOW MEDICINE COUNTY COORDINATES

X=592402.038  
Y=182657.053  
NAD83(1996 ADJ.)

MONUMENT IS 30.39 FEET EAST OF TH 274 CENTERLINE

Statement of evidence for this corner location is on back of this page.

I hereby certify that this survey, plan, or report was prepared by me or under my direct supervision and that I am a duly Licensed Land Surveyor under the laws of the state of Minnesota.

Signature: Matthew J. Schlagel

Typed or Printed Name: Matthew J. Schlagel

Date: 1-17-2019

Reg. No. 24640

## Certificate of Location of Government Corner

East Quarter Corner, Section 16, Township 115 North, Range 39 West

- 1864 The Public Land Survey was completed in 1864 by C. E. Davis and J. W. Webb, Jr. A wood post was set in a mound of dirt with pits to mark the corner.
- 1889 Jonah Peterman found the post in 1889 when he surveyed Union Cemetery to the east. The position of the quarter corner could not be determined from the resulting deed description of the cemetery.
- 1895 John Norgaard surveyed the east line of this section in 1895. He did not indicate whether a monument marking the corner was in place. However, his survey notes indicate that the corner was 0.5 feet north of being midway between section corners.
- 1973 Sept. 17, 1973 no record evidence has been found that any type of monument has been set to mark the corner since the original Public Land Survey.
- Since the corner falls in a cultivated field and there are no occupation lines in the immediate area to determine the position of the corner on the ground, no excavation was made for this corner. East-west fence lines in place, which are west of the section line, do not lead to a common position for the corner.
- 1974 May 2, 1974 the corner was set at the lost location. Placed was a Minnesota Highway Department cast iron monument, 18 inches below the ground, stamped "East Quarter Cor. Sec. 16"
- For details of survey analysis, photographs taken, and 1973 electronic survey measurements, see Survey Report for S.P. 8701 from the Yellow Medicine River to Granite Falls on file in the Surveys Section, Minnesota Highway Department, Willmar, Minnesota.
- 1981 A MnDOT survey crew set a cast iron monument to mark the corner according to State Plane Coordinate surveys conducted in 1972 and 1973. Reconstruction of T.H. 274 in this area was completed in 1980 on a new alignment. The monument was placed 1 inch below the surface of the ground.
- 2012 On June 22, 2012 a MnDOT survey crew recovered the cast iron monument, down 5 inches from the surface. A GPS position was obtained on the corner in Yellow Medicine County Coordinates (NAD83 1996 adj.).
- 2015 In the fall of 2015 a reconstruction and realignment of TH 274 was constructed. It is believed during this time the cast iron monument was removed and destroyed.

Statement of Evidence:

2018

On October 2, 2018 a MnDOT survey crew recovered a  $\frac{3}{4}$  inch iron pin at the location of the 2012 cast iron monument, down 20 inches. Although the top 4-6 inches of the pin was bent and twisted, the bottom 18-20 inches remained straight and the location fit well with the 2012 cast iron monument position. The origin of the iron pin is unknown. The old iron pin was replaced with a new  $\frac{3}{4}$ " x 24" iron pin and a cast iron monument placed above the iron pin, 1 inch below the surface. Ties to the corner were established.