

Corners to be Indexed

S1/4 36-113-39

Doc# 270364 Fee: \$0.00 1 Pages

Property & Public Services
Property Records Division
Yellow Medicine County, Minnesota
I hereby certify that the within instrument
was filed on March 11, 2019 at 9:40 AM

I hereby certify that this document and the data
contained herein was prepared by me or under
my direct supervision.

Janel Timm, Yellow Medicine County Recorder

By Kelly Kauger Deputy

Jerry G. Johnson 3-4-2019
Date
License No. 50343

CERTIFICATE OF LOCATION OF GOVERNMENT CORNER

Land survey monuments situated in Section 36, Township 113, Range 39, 5TH P.M.
STATE OF MINNESOTA, County of YELLOW MEDICINE

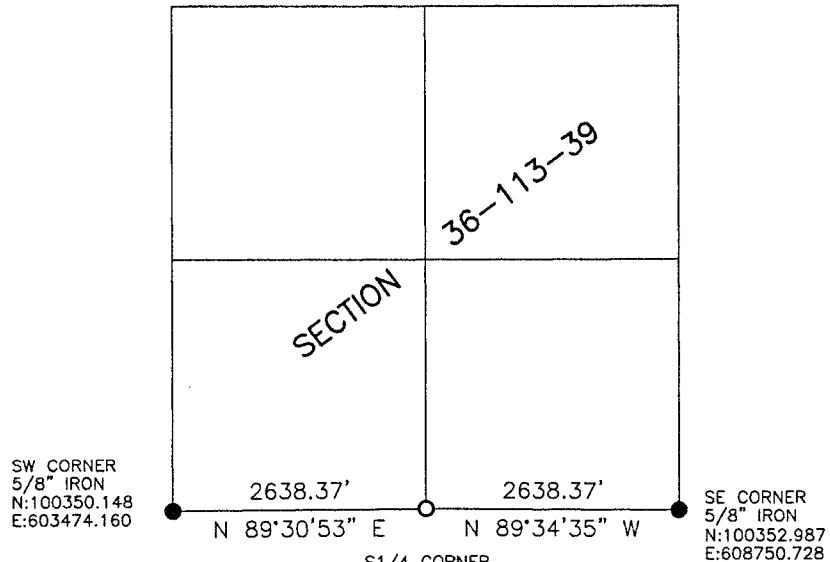
STATEMENT OF EVIDENCE:

In 1858, W.J. Neely did the original survey of the south line of the township.

On December 14, 2018, Bueltel-Moseng Land Surveying set a survey spike with seal #50343
in the center of the road and equal distances between the southwest and southeast corners of
Section 36-113-39. It is in the center of the east-west road and 28.6' east of the center
of the intersection.



- FOUND MONUMENT
- SET MONUMENT



Minnesota State Plane Coordinate
System Yellow Medicine County Datum NAD83 (1996)

S1/4 CORNER
SURVEY SPIKE
W/SEAL #50343
N:100372.491
E:606112.432