

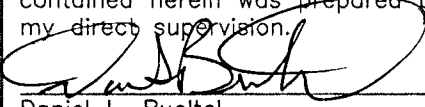
Corners to be Indexed

SE 33-113-38
S1/4 33-113-38

Doc# 270365 Fee: \$0.00 2 Pages

Property & Public Services
Property Records Division
Yellow Medicine County, Minnesota
I hereby certify that the within instrument
was filed on March 11, 2019 at 9:45 AM

I hereby certify that this document and the data
contained herein was prepared by me or under
my direct supervision.



3/4/2019
Date

Daniel L. Bueltel
License No. 43844

Janel Timm, Yellow Medicine County Recorder

By Kelly Krueger Deputy

CERTIFICATE OF LOCATION OF GOVERNMENT CORNER

Land survey monuments situated in Section 33, Township 113, Range 38, 5TH P.M.

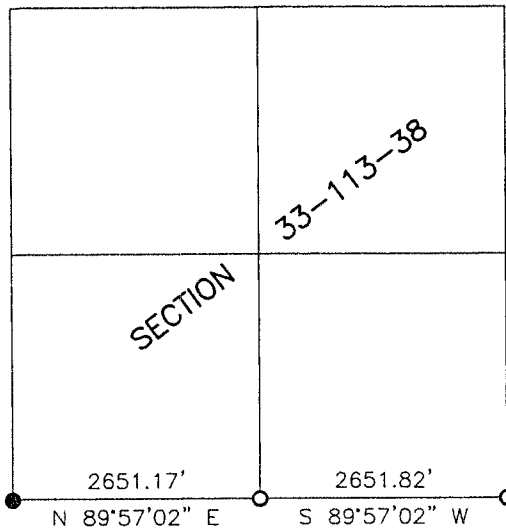
STATE OF MINNESOTA, County of YELLOW MEDICINE

STATEMENT OF EVIDENCE:

- 1858 - Original government survey.
- 1967 - Arbie Nelson set MNDot cast iron monument at S1/4 and SE corners 33-113-38.



- FOUND MONUMENT
- SET MONUMENT



SW CORNER
PK NAIL
N:100418.905
E:619473.195

2651.17' N 89°57'02" E

S1/4 CORNER
5/8" IRON
W/SEAL #43844
N:100421.194
E:622124.365

SE CORNER
PK NAIL
N:100423.485
E:624776.180

Minnesota State Plane Coordinate
System Yellow Medicine County Datum NAD83 (1996)

Statement of Evidence

SE 33-113-38

In 1858, E.N. Darling did the original survey of the south line of the township.

On November 15, 1967, Arbie Nelson found a 5/8" iron stake set by MNDot using the county engineers ties. He set a MNDot cast iron monument in its place.

On December 14, 2018, Bueltel-Moseng Land Surveying set a 5/8" iron with seal #43844 using coordinates from MNDot.

S1/4 33-113-38

In 1858, E.N. Darling did the original survey of the south line of the township.

On November 15, 1967, Arbie Nelson set a MNDot cast iron monument 2652.5 feet from the south corners of Section 33 and on line between the southeast and southwest corners of Section 33-113-38.

On December 14, 2018, Bueltel-Moseng Land Surveying set a survey spike with seal #43844 using coordinates from MNDot. It is in the center of the intersection.