

Corners to be Indexed

SE 34-113-38
S1/4 34-113-38

Doc# 270366 Fee: \$0.00 2 Pages

Property & Public Services
Property Records Division
Yellow Medicine County, Minnesota
I hereby certify that the within instrument
was filed on March 11, 2019 at 9:50 AM

I hereby certify that this document and the data
contained herein was prepared by me or under
my direct supervision.

Janel Timm, Yellow Medicine County Recorder

By Kelly Kauger Deputy

[Signature] 3/4/2019
Date

Daniel L. Bueltel

License No. 43844

CERTIFICATE OF LOCATION OF GOVERNMENT CORNER

Land survey monuments situated in Section 34, Township 113, Range 38, 5TH P.M.

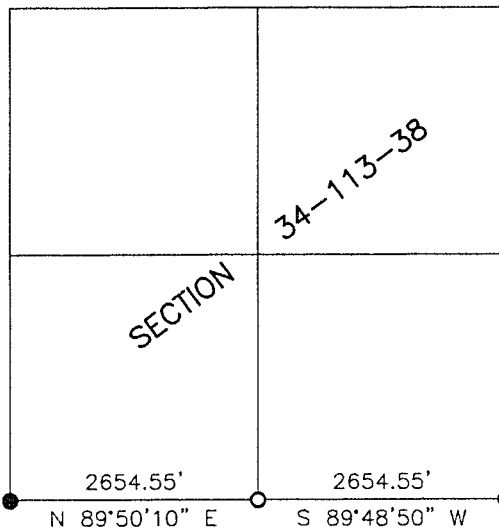
STATE OF MINNESOTA, County of YELLOW MEDICINE

STATEMENT OF EVIDENCE:

- 1858 - Original government survey.
- 1967 - Arbie Nelson set a spike at the S1/4 corner 34-113-38.



- FOUND MONUMENT
- SET MONUMENT



SW CORNER
5/8" IRON
W/SEAL #43844
N:100423.485
E:624776.180

S1/4 CORNER
PK NAIL
N:100431.075
E:627430.723

SE CORNER
PK NAIL
N:100439.702
E:630085.262

Minnesota State Plane Coordinate
System Yellow Medicine County Datum NAD83 (1996)

Statement of Evidence

SE 34-113-38

In 1858, E.N. Darling did the original survey of the south line of the township.

On December 14, 2018, Bueltel-Moseng Land Surveying set a PK nail using coordinate from MNDot. It is in the center of the intersection.

S1/4 34-113-38

In 1858, E.N. Darling did the original survey of the south line of the township.

On November 15, 1967, Arbie Nelson set a spike in the pavement 3' west of the fence to the north and 2654.5' from the southeast corner of Section 34-113-38.

On December 14, 2018, Bueltel-Moseng Land Surveying set a PK nail using coordinates from MNDot. It is in the center of MN T.H. No. 19 and in line with the fence to the north.