

Corners to be Indexed

N1/4 9-115-43

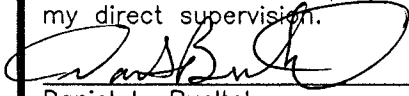
Doc# 270367 Fee: \$0.00 1 Pages

Property & Public Services  
Property Records Division  
Yellow Medicine County, Minnesota  
I hereby certify that the within instrument  
was filed on March 11, 2019 at 9:55 AM

I hereby certify that this document and the data  
contained herein was prepared by me or under  
my direct supervision.

Janel Timm, Yellow Medicine County Recorder

By Kelly Kauger Deputy



2/26/2019  
Date

Daniel L. Bueltel

Date

License No. 43844

# CERTIFICATE OF LOCATION OF GOVERNMENT CORNER

Land survey monuments situated in Section 9, Township 115, Range 43, 5TH P.M.

STATE OF MINNESOTA, County of YELLOW MEDICINE

## STATEMENT OF EVIDENCE:

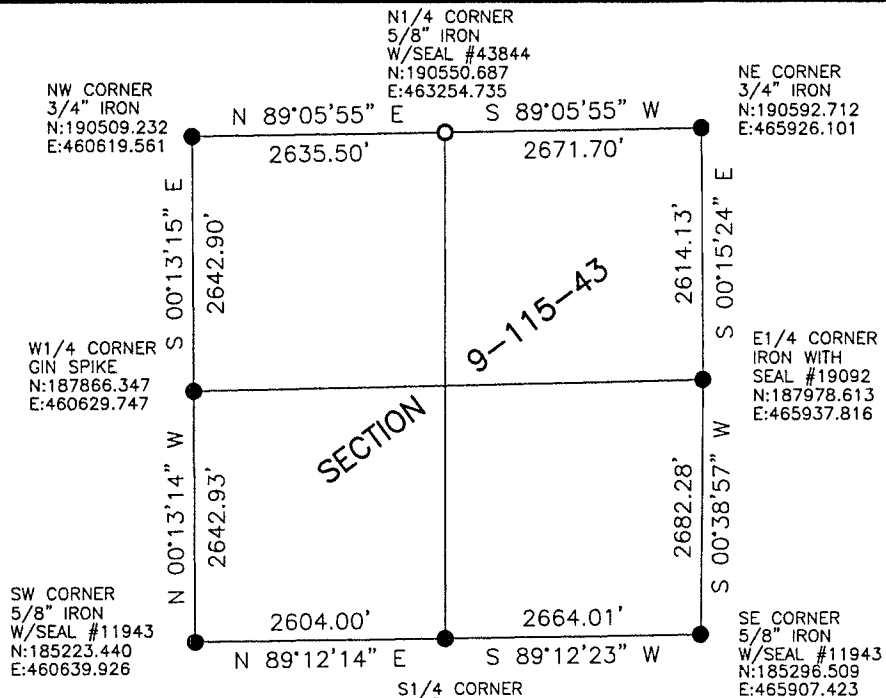
In 1867, David Watson did the original subdivision of the township.

N1/4 9-115-43

On July 5, 2018, Bueltel-Moseng Land Surveying set a 5/8" iron with seal #43844 on line between the section corners and in line with the occupation lines.



- FOUND MONUMENT
- SET MONUMENT



Minnesota State Plane Coordinate  
System Yellow Medicine County Datum NAD83 (1996)