

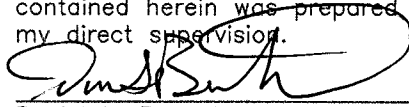
Corners to be Indexed

NE 13-114-42  
N1/4 13-114-42

Doc# 270369 Fee: \$0.00 2 Pages

Property & Public Services  
Property Records Division  
Yellow Medicine County, Minnesota  
I hereby certify that the within instrument  
was filed on March 11, 2019 at 10:05 AM

I hereby certify that this document and the data  
contained herein was prepared by me or under  
my direct supervision.



2/6/2019  
Date

Daniel L. Bueltel  
License No. 43844

Janel Timm, Yellow Medicine County Recorder

By Kelly Kruger Deputy

### CERTIFICATE OF LOCATION OF GOVERNMENT CORNER

Land survey monuments situated in Section 13, Township 114, Range 42, 5TH P.M.

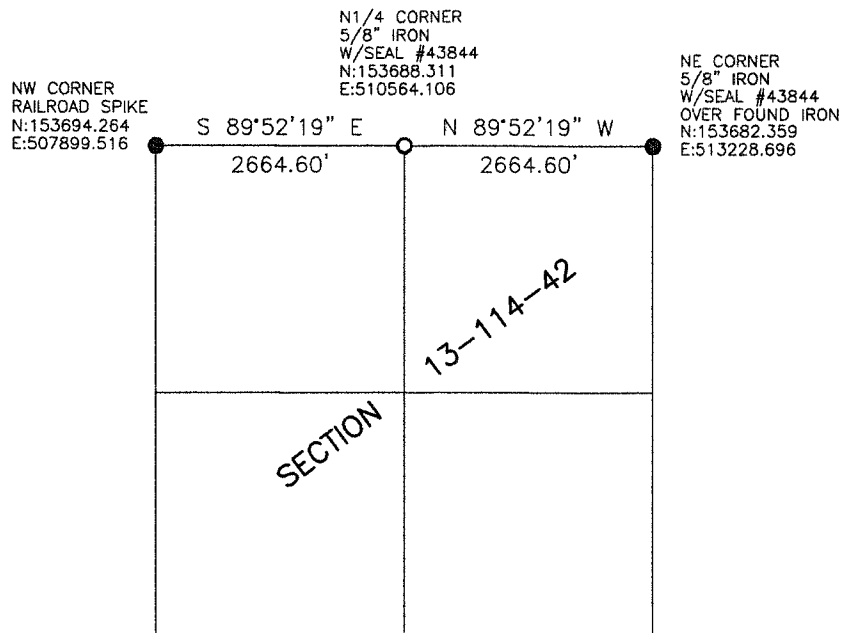
STATE OF MINNESOTA, County of YELLOW MEDICINE

#### STATEMENT OF EVIDENCE:

- 1858 - Original government survey of east line of township.
- 1867 - Original government survey of subdivision of township.



- FOUND MONUMENT
- SET MONUMENT



Minnesota State Plane Coordinate  
System Yellow Medicine County Datum NAD83 (1996)

Statement of Evidence

NE 13-114-42

In 1858, W.J. Neely did the original survey of the east line of the township.

On December 7, 2018, Bueltel-Moseng Land Surveying found a county iron at the corner. We set a 5/8" iron with seal #43844 over the county iron.

N1/4 13-114-42

In 1867, David Watson did the original subdivision of the township.

On December 7, 2018, Bueltel-Moseng Land Surveying set a 5/8" iron with seal #43844 midway and on line between the section corners. It is in the center of the road and in line with the fence to the north.