

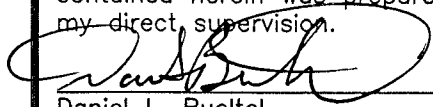
Corners to be Indexed

E1/4 7-114-40

Doc# 270370 Fee: \$0.00 1 Pages

Property & Public Services  
Property Records Division  
Yellow Medicine County, Minnesota  
I hereby certify that the within instrument  
was filed on March 11, 2019 at 10:10 AM

I hereby certify that this document and the data  
contained herein was prepared by me or under  
my direct supervision.



Daniel L. Bueltel

License No. 43844

2/6/2019  
Date

Janel Timm, Yellow Medicine County Recorder

By Kelly Kauger Deputy

# CERTIFICATE OF LOCATION OF GOVERNMENT CORNER

Land survey monuments situated in Section 7, Township 114, Range 40, 5TH P.M.

STATE OF MINNESOTA, County of YELLOW MEDICINE

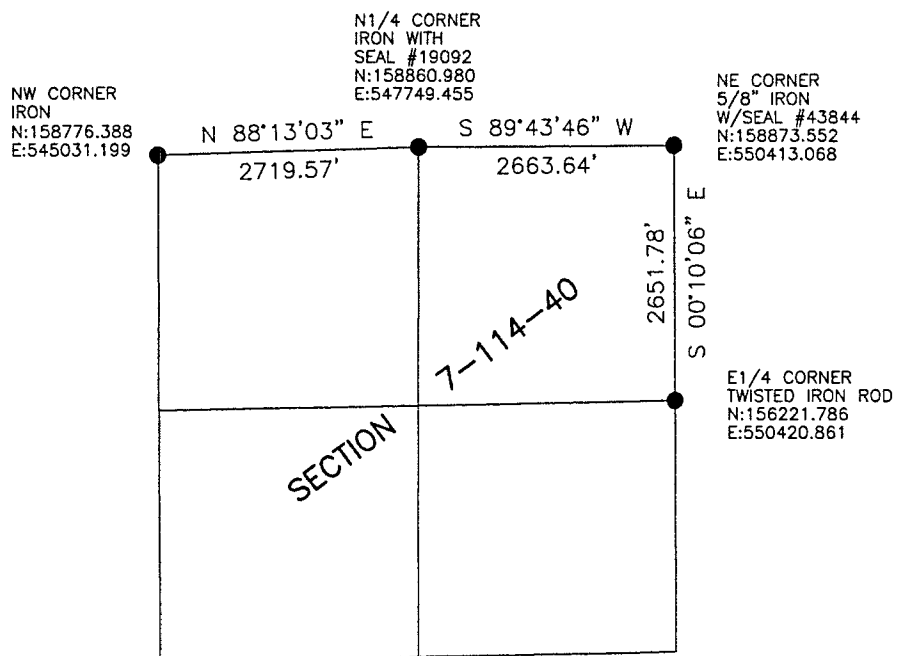
### STATEMENT OF EVIDENCE:

In 1858, W.J. Neely did the original survey of the west line of the township.

On June 5, 2018, Bueltel-Moseng Land Surveying found a twisted iron rod at the corner.



- FOUND MONUMENT
- SET MONUMENT



Minnesota State Plane Coordinate  
System Yellow Medicine County Datum NAD83 (1996)