

Corners to be Indexed

N1/4 21-115-40  
E1/4 17-115-40

**Doc# 270372 Fee: \$0.00 2 Pages**

Property & Public Services  
Property Records Division  
Yellow Medicine County, Minnesota  
I hereby certify that the within instrument  
was filed on March 11, 2019 at 10:20 AM

I hereby certify that this document and the data  
contained herein was prepared by me or under  
my direct supervision.

Janel Timm, Yellow Medicine County Recorder

By Kelly Krueger Deputy

Daniel L. Bueltel  
License No. 43844

2/6/2019  
Date

## CERTIFICATE OF LOCATION OF GOVERNMENT CORNER

Land survey monuments situated in Section 16, Township 115, Range 40, 5TH P.M.

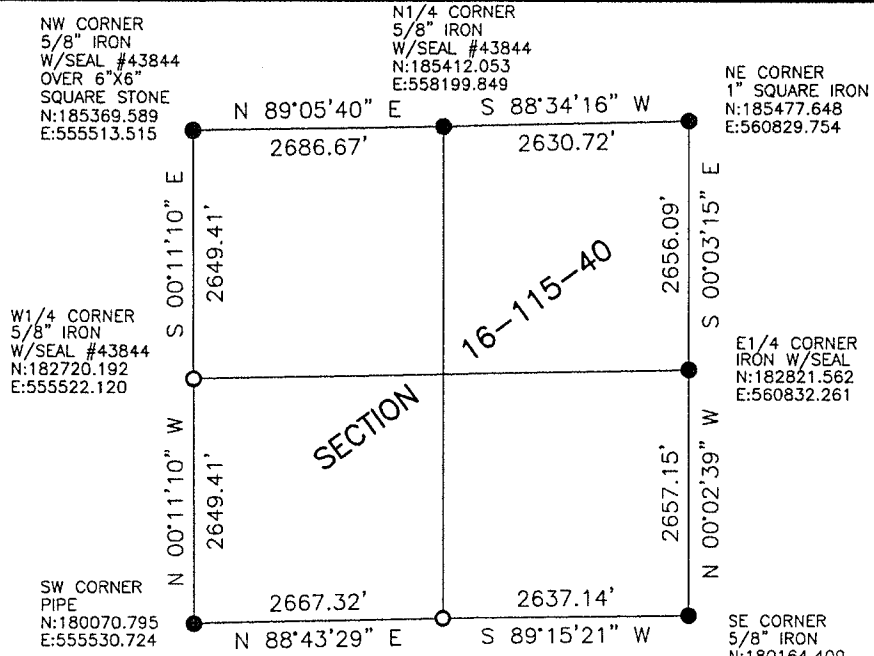
STATE OF MINNESOTA, County of YELLOW MEDICINE

### STATEMENT OF EVIDENCE:

1858 - Original government survey.  
1917 - John Norgaard found a stone he previously set at S1/4 16-115-40.  
No Date - Marihart set iron with seal #19092 at S1/4 16-115-40.



- FOUND MONUMENT
- SET MONUMENT



Minnesota State Plane Coordinate  
System Yellow Medicine County Datum NAD83 (1996)

Statement of Evidence

N1/4 21-115-40 (S1/4 16-115-40)

In 1858, W.J. Neely did the original subdivision of the township.

In November, 1917, John Norgaard, County Surveyor, found a stone and pit and mound set by him over 20 years earlier.

No Date, Marihart Surveying set an iron with seal 19092.

On November 2, 2018, Bueltel-Moseng Land Surveying dug with a backhoe. We found an iron with seal #19092. We removed the iron and continued digging. We found nothing else. We set a 5/8" iron with seal #43844 in place of the iron. It is in the center of the road and in line with occupation line to the north.

E1/4 17-115-40 (W1/4 16-115-40)

In 1858, W.J. Neely did the original subdivision of the township.

On November 2, 2018, Bueltel-Moseng Land Surveying set a 5/8" iron with seal midway and on line between the section corners. It is 2'± west of the center of the road.