

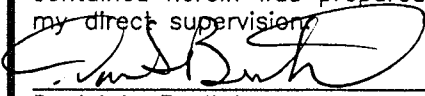
Corners to be Indexed

NE 22-115-45
N1/4 22-115-45
E1/4 21-115-45
E1/4 22-115-45

Doc# 270373 Fee: \$0.00 2 Pages

Property & Public Services
Property Records Division
Yellow Medicine County, Minnesota
I hereby certify that the within instrument
was filed on March 11, 2019 at 10:25 AM

I hereby certify that this document and the data
contained herein was prepared by me or under
my direct supervision.



2/1/2019
Date

Daniel L. Bueltel
License No. 43844

Janel Timm, Yellow Medicine County Recorder

By Kelly Kauger Deputy

CERTIFICATE OF LOCATION OF GOVERNMENT CORNER

Land survey monuments situated in Section 22, Township 115, Range 45, 5TH P.M.

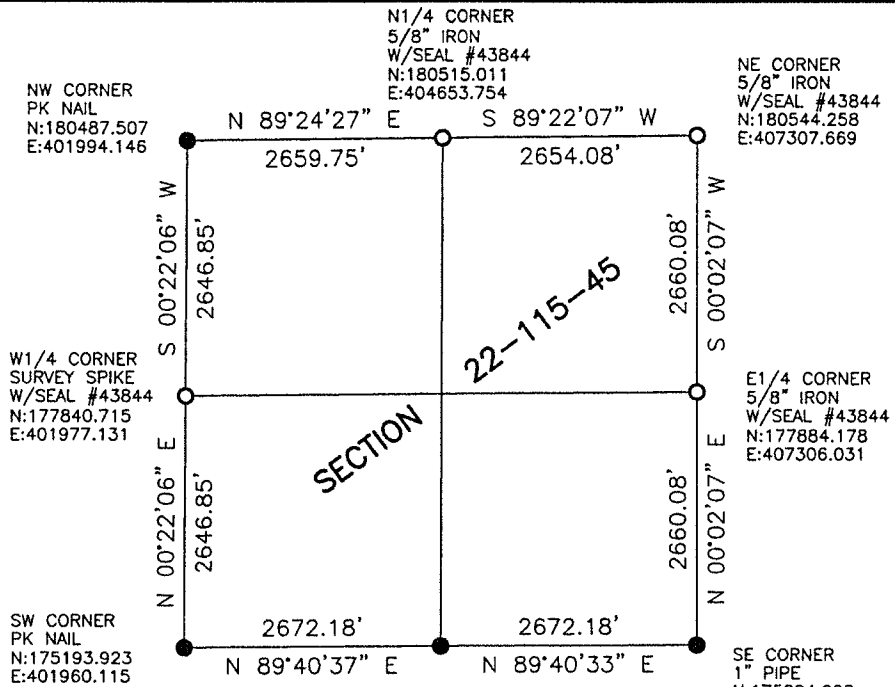
STATE OF MINNESOTA, County of YELLOW MEDICINE

STATEMENT OF EVIDENCE:

- 1871 - Original government survey.
- 1904 - John Norgaard set the W1/4 corner.
- 1988 - Moseng Land Surveying dug and found N1/4 corner and NE corner.



- FOUND MONUMENT
- SET MONUMENT



Minnesota State Plane Coordinate
System Yellow Medicine County Datum NAD83 (1996)

S1/4 CORNER
5/8" IRON
W/SEAL #11943
N:175208.984
E:404632.254

Statement of Evidence

NE 22-115-45

In 1871, Lewis Harrington did the original subdivision of the township.

On April 11, 1988, Moseng Land Surveying found a 3/4" iron. We dug with a backhoe and found a field stone. Set a 5/8" iron with seal #11943 over it.

On April 11, 2018, Bueltel-Moseng Land Surveying searched for the corner. We found nothing. The county highway department had done a total grading project on the road. We set a 5/8" iron with seal #43844 using the highway departments coordinates.

N1/4 22-115-45

In 1871, Lewis Harrington did the original subdivision of the township.

On April 11, 1988, Moseng Land Surveying dug with a backhoe and found a large field stone. The set a 5/8" iron with seal #11943 over it.

On April 11, 2018, Bueltel-Moseng Land Surveying searched for the corner. We found nothing. The county highway department had done a total grading project on the road. We set a 5/8" iron with seal using information from the 1988 survey. It is 2'± south of the center of the road.

E1/4 21-115-45 (W1/4 22-115-45)

In 1871, Lewis Harrington did the original subdivision of the township.

On March 31, 1904, John Norgaard set corner midway and on line between the section corners.

On April 11, 2018, Bueltel-Moseng Land Surveying set a 3" suvey spike with seal #43844 midway and on line between the section corners.

E1/4 22-115-45

In 1871, Lewis Harrington did the original subdision of the township.

On April 11, 2018, Bueltel-Moseng Land Surveying set a 5/8" iron with seal #43844 midway and on line between the section corners.