

CERTIFICATE OF LOCATION OF GOVERNMENT CORNER

NORTH QUARTER Corner of Section 25, Township 114, Range 42, 5TH P.M.

STATE OF MINNESOTA, County of YELLOW MEDICINE

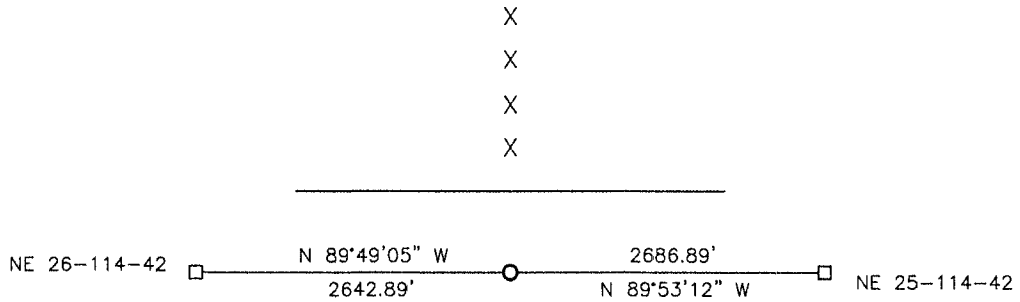
At the corner location shown on the sketch:

On _____ found a _____
DATE

left monument as found, lowered monument, removed monument (explain)

On 04-09-2018 placed a 5/8" IRON WITH SEAL #50343.
DATE

SKETCH OF REFERENCE TIES



X
X
X
X

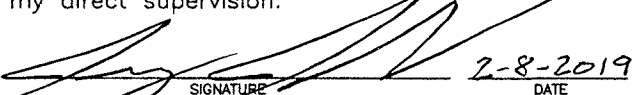
X
X
X
X

Minnesota State Plane Coordinate
System Yellow Medicine County Datum
NAD83 (1996)

N: 143079.072
E: 510544.695

Statement of evidence relative to this corner location is on back of page.

I hereby certify that this document and the data contained herein was prepared by me or under my direct supervision.


SIGNATURE DATE 2-8-2019

Registration No. 50343

- Land Surveyor, Professional Engineer
- County Surveyor, County Engineer

Doc# 270374 Fee: \$0.00 2 Pages

Property & Public Services
Property Records Division
Yellow Medicine County, Minnesota
I hereby certify that the within instrument was filed on March 11, 2019 at 10:30 AM

Janel Timm, Yellow Medicine County Recorder

By Kelly Kanger Deputy

Statement of Evidence

In 1867, David Watson did the original subdivision of the township.

Roy Marihart set a 1/2" iron with seal #19092 in the center of the road and in line with the fences to the north and south.

On April 9, 2018, Bueltel-Moseng Land Surveying searched for the Marihart iron at the corner. We found nothing. We set a 5/8" iron with seal #50343 using information from the Marihart survey done in Section 25-114-42.