

CERTIFICATE OF LOCATION OF GOVERNMENT CORNER

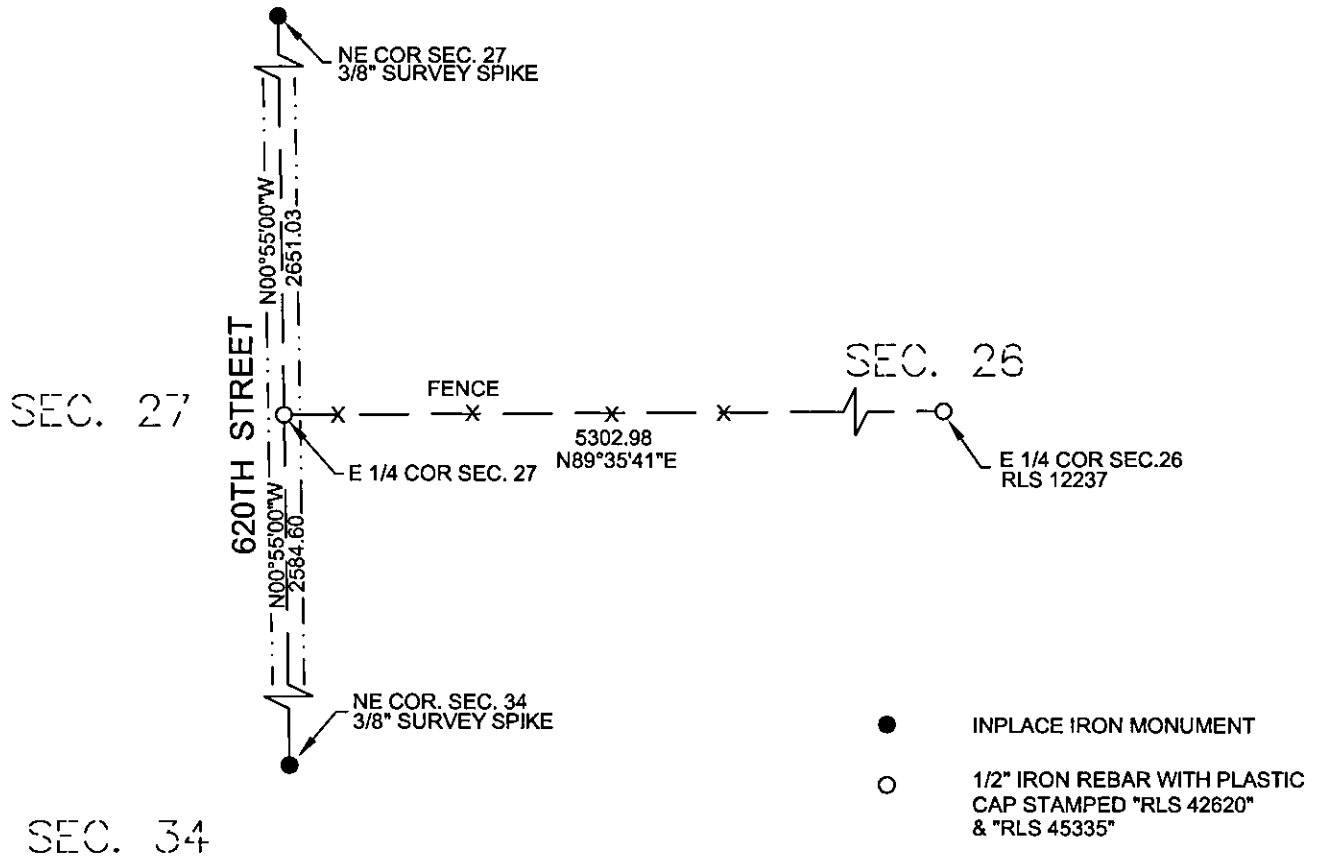
E 1/4 Corner of Section 27 , Township 113 North, Range 38 West of the 5th P.M. State of Minnesota, County of Yellow Medicine .

At the corner location shown on the sketch:

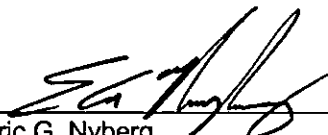
On _____ found a _____

On 1/23/2019 placed a 1/2" x 18" iron rebar with a plastic cap stamped "RLS 42620 & RLS 45335".

SKETCH OF REFERENCE TIES



I hereby certify that this survey, plan, report was prepared by me or under my direct supervision and that I am a duly Registered Land Surveyor under the laws of the State of Minnesota.

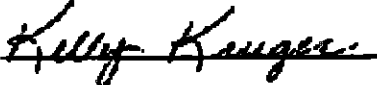

Eric G. Nyberg

Date January 31st, 2019 License No. 45335

Doc# 270397 Fee: \$0.00 2 Pages

Property & Public Services
Property Records Division
Yellow Medicine County, Minnesota
I hereby certify that the within instrument was filed on March 18, 2019 at 9:30 AM

Janel Timm, Yellow Medicine County Recorder

By  Deputy

STATEMENT OF EVIDENCE

East Quarter Corner of Section 27, Township 113 North, Range 38 West, Yellow Medicine County, Minnesota.

- 1864 The U.S. General Land Office field notes, on file in the MN Secretary of State's Office, describe this original corner as a oak post in mound with trench & pit for 1/4 section corner.
- 2019 Nyberg Surveying did not find any evidence of the original section corner at this location. A fence line running east towards the east Quarter corner of section 26 was located. The corner was reestablished at the intersection of a straight line between the Northeast corner of Section 27 and the Northeast corner of Section 34 and the fence line running east. The position was found to measure 2651.03 feet from the Northeast corner of Section 27 and 2584.60 from the Northeast corner of Section 34. The corner lies on the centerline of 620th Street.
- 2019 A 1/2" iron rebar stamped "RLS 42650 & RLS 45335" was set at this location and its position was accepted as the East Quarter Corner of Section 27.