

CERTIFICATE OF LOCATION OF GOVERNMENT CORNER

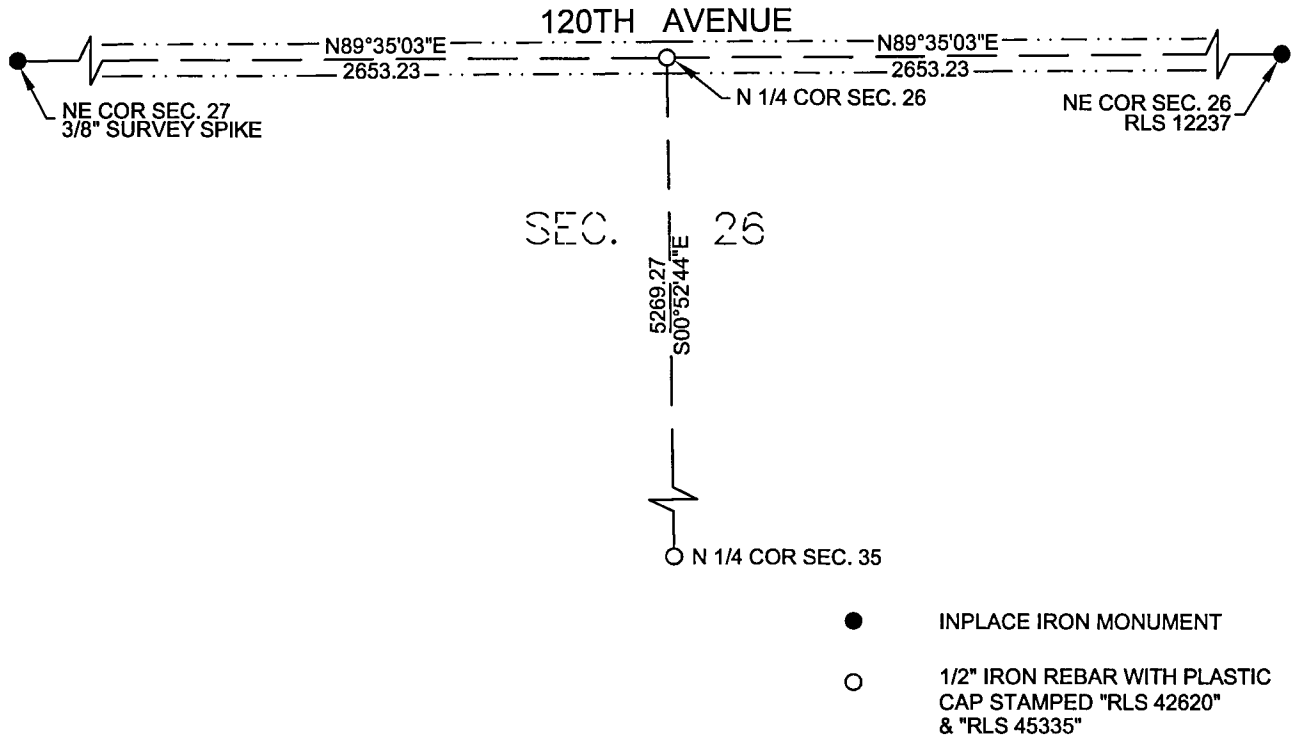
N 1/4 Corner of Section 26 , Township 113 North, Range 38 West of the 5th P.M. State of Minnesota, County of Yellow Medicine .

At the corner location shown on the sketch:

On _____ found a _____

On 1/23/2019 placed a 1/2" x 18" iron rebar with a plastic cap stamped "RLS 42620 & RLS 45335".

SKETCH OF REFERENCE TIES



I hereby certify that this survey, plan, report was prepared by me or under my direct supervision and that I am a duly Registered Land Surveyor under the laws of the State of Minnesota.

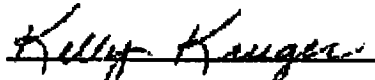

Eric G. Nyberg

Date January 31st, 2019 License No. 45335

Doc# 270399 Fee: \$0.00 2 Pages

Property & Public Services
Property Records Division
Yellow Medicine County, Minnesota
I hereby certify that the within instrument was filed on March 18, 2019 at 9:40 AM

Janel Timm, Yellow Medicine County Recorder

By  Deputy

Statement of evidence for this corner position is on the back of this page

(FILE NO. 9986)

STATEMENT OF EVIDENCE

North Quarter Corner of Section 26, Township 113 North, Range 38 West, Yellow Medicine County, Minnesota.

- 1864 The U.S. General Land Office field notes, on file in the MN Secretary of State's Office, describe this original corner as a oak post in mound with trench & pit for 1/4 section corner.
- 2019 Nyberg Surveying did not find any evidence of the original section corner at this location. No evident occupation in a north, south, east or west direction was evident at this location. The corner was considered to be lost and was reestablished by single proportionate measurement using the Northeast Corner of Section 27 and the Northeast Corner of Section 26. The position was found to measure 2653.23 feet from the adjoining section corners. The corner lies approximately 4 feet north of the centerline of 120th Avenue.
- 2019 A 1/2" iron rebar stamped "RLS 42650 & RLS 45335" was set at this location and its position was accepted as the North Quarter Corner of Section 26.