

Corners to be Indexed

N1/4 7-113-38

Doc# 272032 Fee: \$0.00 2 Pages

Property & Public Services
Property Records Division
Yellow Medicine County, Minnesota
I hereby certify that the within instrument
was filed on December 17, 2019 at 11:05 AM

I hereby certify that this document and the data
contained herein was prepared by me or under
my direct supervision.

Janel Timm, Yellow Medicine County Recorder

By Kelly Krueger Deputy

Jerry G. Johnson
License No. 50343

8/27/2019
Date

CERTIFICATE OF LOCATION OF GOVERNMENT CORNER

Land survey monuments situated in Section 7, Township 113, Range 38, 5TH P.M.

STATE OF MINNESOTA, County of YELLOW MEDICINE

STATEMENT OF EVIDENCE:

1864 - Original government survey.

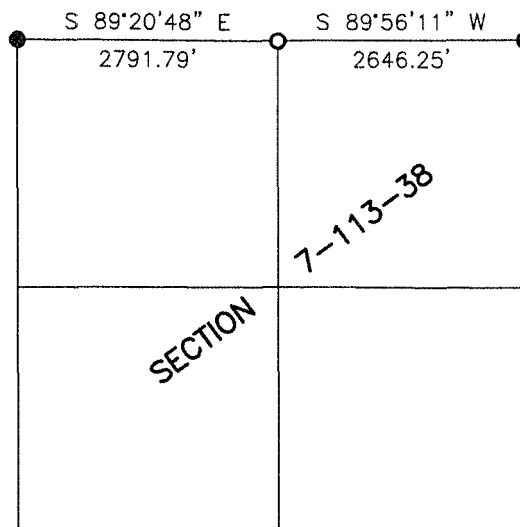


- FOUND MONUMENT
- SET MONUMENT

N:126859.713
E:608599.557
PK NAIL

N:126827.882
E:611391.166
SURVEY SPIKE
W/SEAL #50343

N:126830.824
E:614037.417
PK NAIL



Minnesota State Plane Coordinate
System Yellow Medicine County Datum NAD83 (1996)

Statement of Evidence

N1/4 7-113-38

In 1864, C.E. Davis and J.W. Webb, Jr. did the original subdivision of the township.

On May 6, 2019, we set a survey spike with seal #50343 proportionate distances between the section corners and in the center of the road. It is 17'± south of line between the section corners and in line with the fences to the north and south.