

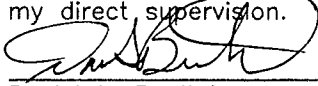
Corners to be Indexed

N1/4 3-114-46
E1/4 3-114-46
NE*9-114-46 *Corner
NE*4-114-46 *Corner
E1/4 4-114-46

Doc# 272059 Fee: \$0.00 2 Pages

Property & Public Services
Property Records Division
Yellow Medicine County, Minnesota
I hereby certify that the within instrument
was filed on December 20, 2019 at 2:30 PM

I hereby certify that this document and the data
contained herein was prepared by me or under
my direct supervision.



Daniel L. Bueltel

License No. 43844

12/17/2019
Date

Janel Timm, Yellow Medicine County Recorder

By Kelly Kauger Deputy

CERTIFICATE OF LOCATION OF GOVERNMENT CORNER

Land survey monuments situated in Section 3, Township 114, Range 46, 5TH P.M.

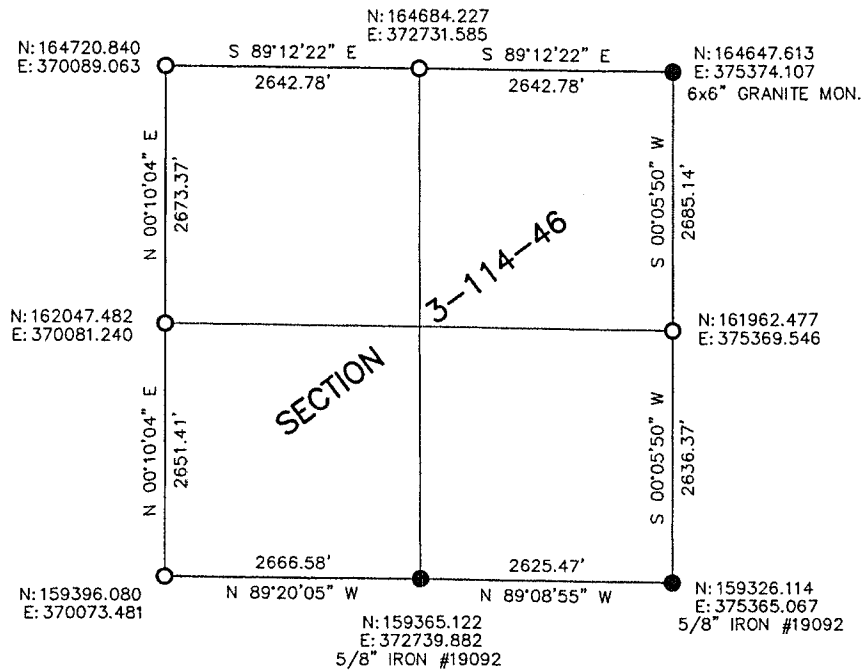
STATE OF MINNESOTA, County of Yellow Medicine

STATEMENT OF EVIDENCE:

1871 - CORNERS WERE ESTABLISHED BY ORIGINAL SURVEY OF TOWNSHIP



- FOUND MONUMENT
- SET MONUMENT



Minnesota State Plane Coordinate
System Yellow Medicine County Datum NAD83 (1996)

Statement of Evidence

N1/4 3-114-46

MNDOT highway plans show corner at intersection of north-south fence lines and in centerline of road. Shows nothing set.

On September 27, 2017, Bueltel-Moseng Land Surveying searched for corner and found nothing. Set a P.K. nail midway and on line between section corners. Corner is in line with north-south fences and in centerline of road as noted on highway plans.

E1/4 3-114-46

July 1918, John Norgaard found pits and small pile of stones, 2642 north of the southeast corner.

On September 27, 2017, Bueltel-Moseng Land Surveying searched for corner and found nothing. Set 5/8" iron with seal 43844 single proportionately and on line with section corners. Corner is in line with the east-west fence lines and on west edge of a field path.

NE* 9-114-46 *Corner

On September 27, 2017, Bueltel-Moseng Land Surveying dug with backhoe in line with fence to the north and found remain of wood stake 3'± down, continued digging and found nothing else. Set a 5/8" iron with seal 43844 at location of found wood stake remains. Corner is in line with fence to north and in centerline of road. There is an unrecorded 3/4" iron 7.0'± east.

NE* 4-114-46 *Corner

MNDOT highway plans show a found granite monument at corner at intersection and in centerline of road.

No Date - Yellow Medicine County Highway Dept. found nail 3' below road surface.

On September 27, 2017, Bueltel-Moseng Land Surveying searched for corner and found nothing. Set a 3" survey spike with seal 43844 using coordinates recorded by County Hwy. Dept.

E1/4 4-114-46

On September 27, 2017, Bueltel-Moseng Land Surveying searched for corner and found nothing. Set 5/8" iron with seal 43844 on line with section corners and inline with east-west fences. Corner is in middle diagonal field path, 12'± east of north fence line and 16'± west of south fence line.