

Corners to be Indexed

NW Cor. 17-114-44
 NE Cor. 18-114-44
 West Quarter Cor. 17-114-44
 East Quarter Cor. 18-114-44
 North Quarter Cor 17-114-44
 South Quarter Cor 17-114-44
 North Quarter Cor 20-114-44

Doc# 277296 Fee: \$0.00 2 Pages

Property & Public Services
 Property Records Division
 Yellow Medicine County, Minnesota
 I hereby certify that the within instrument
 was filed on February 1, 2022 at 9:00 AM

I hereby certify that this document and the data
 contained herein was prepared by me or under
 my direct supervision.

[Signature] 5/3/2021
 Daniel L. Buettel Date
 License No. 43844

Janel Timm, Yellow Medicine County Recorder

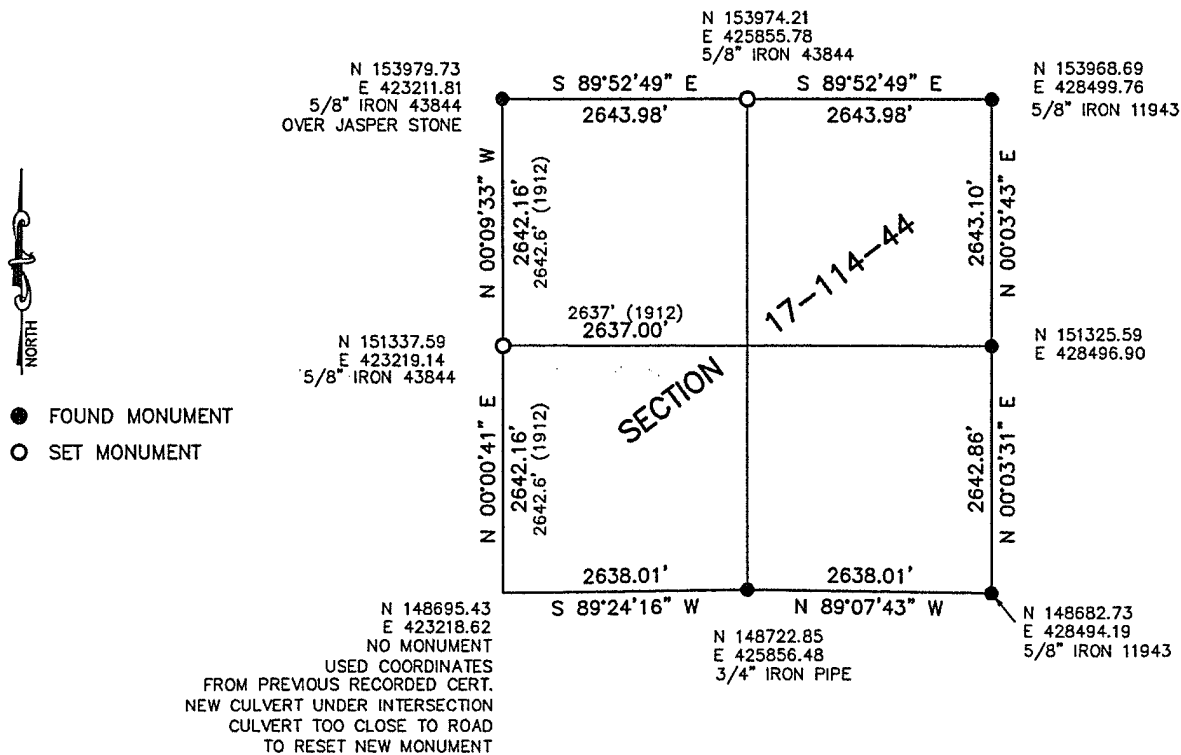
By *[Signature]* Deputy

CERTIFICATE OF LOCATION OF GOVERNMENT CORNER

Land survey monuments situated in Section 17, Township 114, Range 44, 5TH P.M.
 STATE OF MINNESOTA, County of Yellow Medicine

STATEMENT OF EVIDENCE:

Oct. 1912, John Norgaard, County Surveyor found or set stones at all corners
 of Section 17-114-44



Minnesota State Plane Coordinate
 System Yellow Medicine County Datum NAD83 (1996)

Statement of Evidence

NW 17-114-44 (NE 18-114-44)

On April 16, 2021, found spike, removed and dug with backhoe. Found a 6"x6" jasper stone 2.6' southwesterly of spike. Placed a 5/8" iron with seal 43844 east side of stone and a 5/8" iron with seal 43844 near road surface above the jasper stone.

W1/4 17-114-44 (E1/4 18-114-44)

On April 16, 2021, Found 1/2" pipe with seal 42300, removed and dug with backhoe. Hole was 8 feet N-S and 6 feet E-W. Found nothing. It was determined that the found pipe was placed using the spike at northwest corner of 17 to establish corner. The spike (now removed) at northwest corner, is 2.6 northeasterly of a found jasper monument. After review and breaking down section 17, I placed corner midway and in centerline of road. This matches the distance to center of section from 1912 survey. This position is 2.78 feet, S 80°50'23" E from position of found capped pipe (now removed).

N1/4 17-114-44

On April 16, 2021, dug with backhoe midway and on line for recorded stone and found nothing. Set 5/8" iron with seal 43844 midway and on line. It is in the center of the road and in line with occupation north and south.

S1/4 17-114-44 (N1/4 20-114-44)

On April 16, 2021, Found a 3/4" iron pipe midway between section corners and in center of road. Did not dig for stone because of a buried utility line crossing near dig location. Accepted position of found pipe. If road is ever to be rebuilt, it is recommended an attempt be made to recover stone.

E1/4 17-114-44

On April 16, 2021, Found a 5/8" iron with seal midway and on line between section corners and in center of road. Did not dig for stone because of slough area on both sides of road. Accepted position of found iron.