

Corners to be Indexed

E1/4 COR. 2-114-40

Doc# 277297 Fee: \$0.00 2 Pages

Property & Public Services
Property Records Division
Yellow Medicine County, Minnesota
I hereby certify that the within instrument
was filed on February 1, 2022 at 9:05 AM

I hereby certify that this document and the data
contained herein was prepared by me or under
my direct supervision

[Signature]

1/7/2022
Date

Daniel L. Bueltel

License No. 43844

Janel Timm, Yellow Medicine County Recorder

By *[Signature]* Deputy

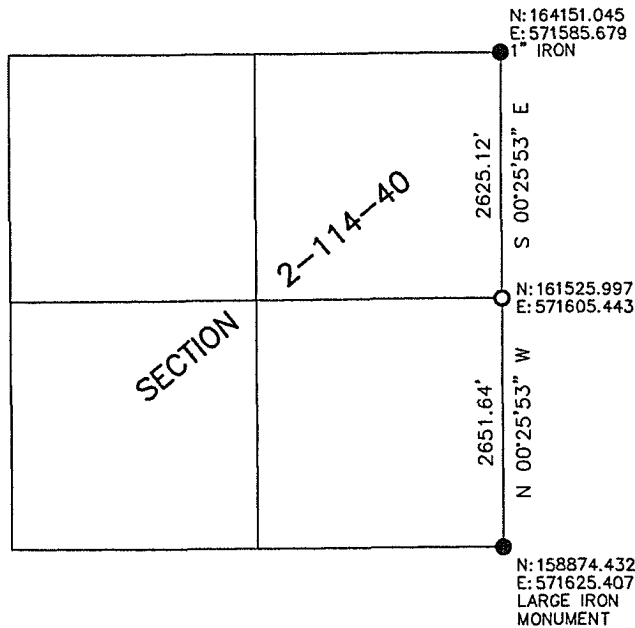
CERTIFICATE OF LOCATION OF GOVERNMENT CORNER

Land survey monuments situated in Section 2, Township 114, Range 40, 5TH P.M.

STATE OF MINNESOTA, County of YELLOW MEDICINE



- FOUND MONUMENT
- SET MONUMENT
-5/8" IRON
W/SEAL #43844



STATEMENT OF EVIDENCE: SECTION 2-114-40

E1/4 COR. 2-114-40

No Date, map of a survey of Sandnes Township shows the East $\frac{1}{4}$ corner is 2652 feet north of the Southeast Corner and 2626 feet south of the Northeast Corner.

On June 15, 2020 Bueltel-Moseng Land Surveying set a 5/8" iron with seal #43844 single-proportionate from the Southeast corner using distance from the survey of the township.