

Corners to be Indexed

N1/4 COR. SEC. 36-115-41
 SW COR. SEC. 36-115-41
 NE COR. SEC. 2-114-41
 S1/4 COR. SEC. 36-115-41
 N1/4 COR. SEC. 1-114-41
 SE COR. SEC. 36-115-41
 NE COR. SEC. 1-114-41

Doc# 277300 Fee: \$0.00 2 Pages

Property & Public Services
 Property Records Division
 Yellow Medicine County, Minnesota
 I hereby certify that the within instrument
 was filed on February 1, 2022 at 9:20 AM

I hereby certify that this document and the data
 contained herein was prepared by me or under
 my direct supervision

Janel Timm, Yellow Medicine County Recorder

By Marit Norzlang Deputy

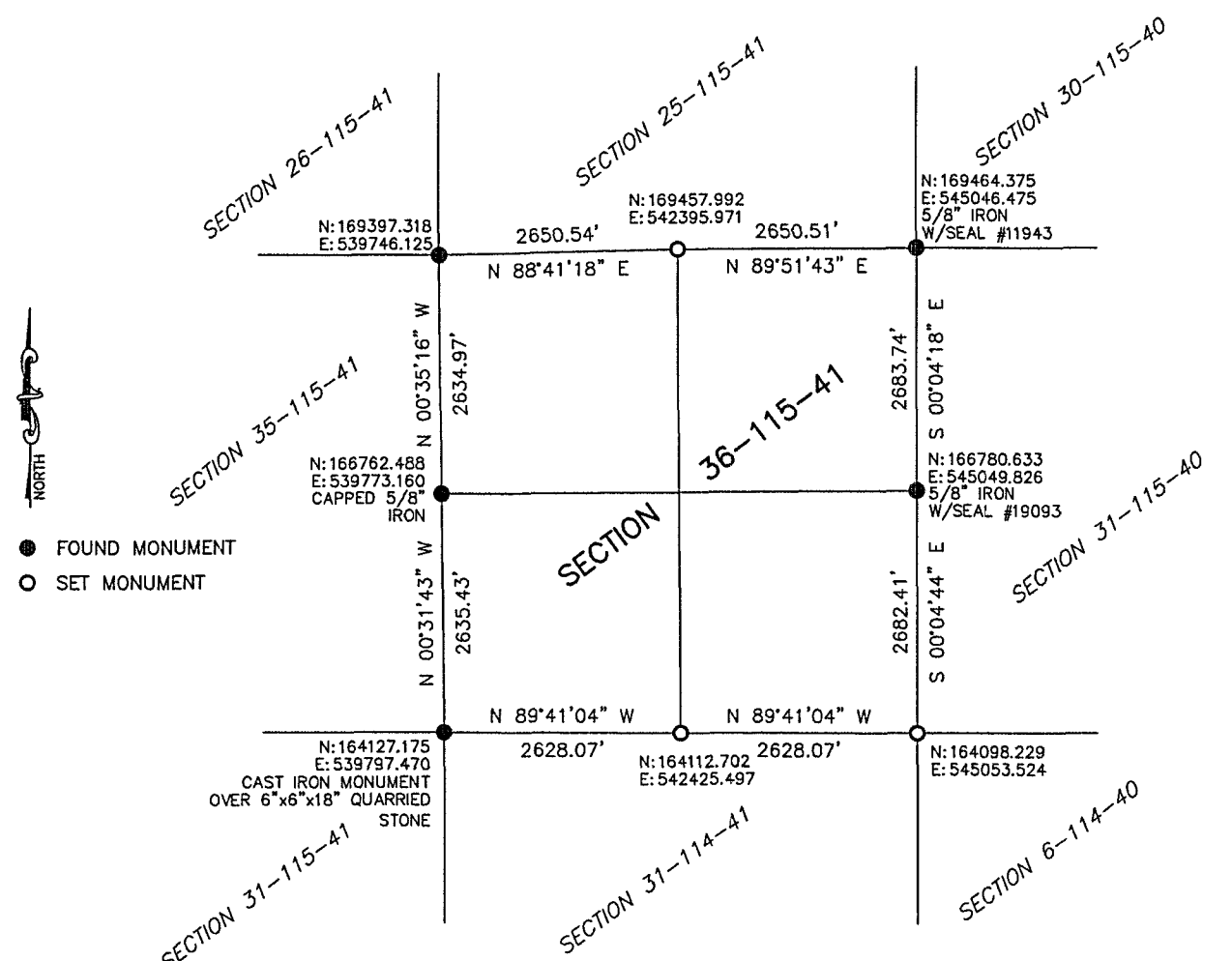
Daniel L. Bueltel
 License No. 43844

1/20/2022
 Date

CERTIFICATE OF LOCATION OF GOVERNMENT CORNER

Land survey monuments situated in Section 36, Township 115, Range 41, 5TH P.M.

STATE OF MINNESOTA, County of YELLOW MEDICINE



Yellow Medicine County Coordinate System (1996 Adj.)

Statement of Evidence: SECTION 36-115-41

N1/4 COR. SEC. 36-115-41

On January 27, 2014 Roy Marihart set 5/8" iron with seal #19092 in centerline of road and midway between section corners.

On July 30, 2021 Bueltel-Moseng Land Surveying did not find iron set by Roy Marihart. Reset corner using Mariharts survey from 2014.

SW COR. SEC. 36-115-41 (NE COR. 2-114-41)

On July 30, 2021 Bueltel-Moseng Land Surveying dug with backhoe and found a 6"x6"x18" quarried stone and set a cast iron monument over top of the stone.

S1/4 COR. SEC. 36-115-41 (N1/4 COR. 1-114-41)

On July 30, 2021 Bueltel-Moseng Land Surveying set a 5/8" iron with seal #43844 midway and on line between section corners, corner fell 1'± south of the centerline of the road.

SE COR. SEC. 36-115-41 (NE COR. 1-114-41)

On July 30, 2021 Bueltel-Moseng Land Surveying found a bridge spike, removed and dug with a backhoe, found nothing. Replaced bridge spike with 5/8" iron with seal #43844.