

Corners to be Indexed

N1/4 36-114-39
S1/4 36-114-39 (N1/4 1-113-39)
W1/4 36-114-39 (E1/4 35-114-39)

Doc# 279605 Fee: \$0.00 2 Pages

Property & Public Services
Property Records Division
Yellow Medicine County, Minnesota
I hereby certify that the within instrument
was filed on February 13, 2023 at 12:20 PM

I hereby certify that this document and the data
contained herein was prepared by me or under
my direct supervision

[Signature]

2/9/2023
Date

Daniel L. Buettel

License No. 43844

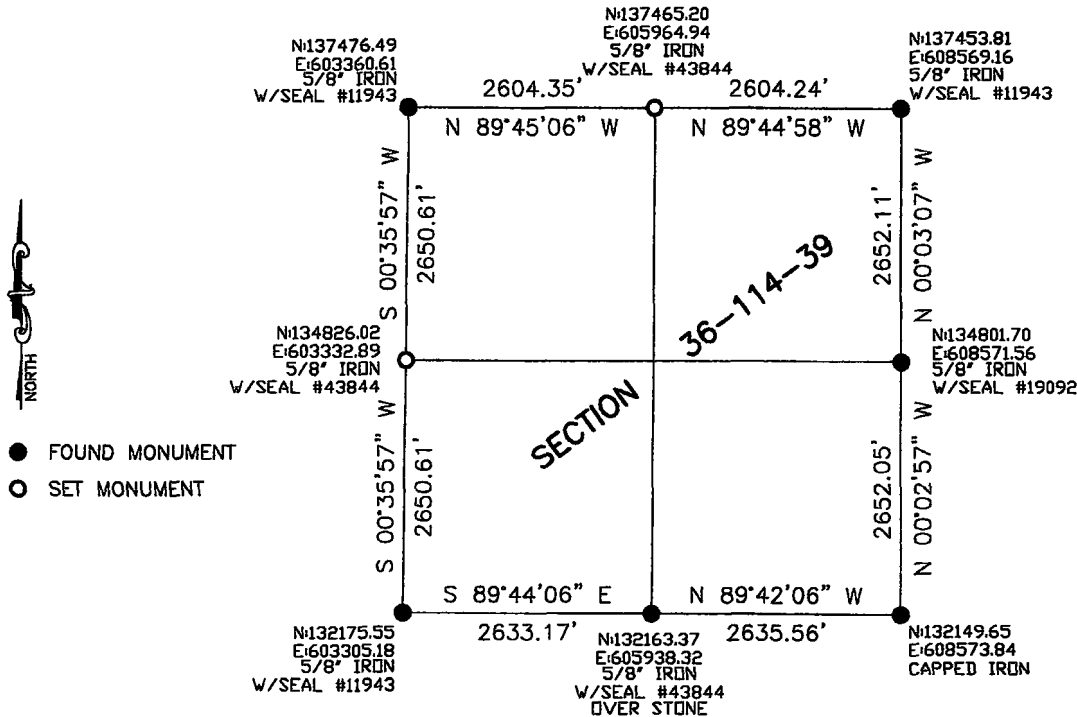
Janel Timm, Yellow Medicine County Recorder

By Marit Nordang Deputy

CERTIFICATE OF LOCATION OF GOVERNMENT CORNER

Land survey monuments situated in Section 36, Township 114, Range 39, 5TH P.M.

STATE OF MINNESOTA, County of YELLOW MEDICINE



Statement of Evidence

N1/4 36-114-39

In September, 1864, Chas E. Davis and J.W. Webb Jr. did the original subdivision of the township.

In June 1891, Jonah Peterman, County Surveyor, found the corner.

A survey from 1920 shows a stone at the corner midway between section corners with a total mile being 5206 feet and the half mile being 2603 feet.

On May 20, 2022 Bueltel-Moseng Land Surveying found a $\frac{1}{2}$ " iron with seal #19092, we recorded the position of the iron, removed and dug with a back hoe, nothing was found. Set a $\frac{5}{8}$ " iron with seal #43844 at the position of the found $\frac{1}{2}$ " iron. Distances are within 1.00'±

W1/4 36-114-39 (E1/4 35-114-39)

In September, 1864, Chas E. Davis and J.W. Webb Jr. did the original subdivision of the township.

On May 20, 2022, Bueltel-Moseng Land Surveying set a $\frac{5}{8}$ " iron with seal #43844 midway and on line between section corners.

S1/4 36-114-36 (N1/4 1-113-39)

In September, 1864, Chas E Davis and J.W. Webb Jr. did the original subdivision of the township.

In June 1891, Jonah Peterman, County Surveyor, shows a field stone at the corner.

On May 20, 2022 Bueltel-Moseng Land Surveying dug with back hoe and found an 18" field stone 4' below the roads surface. Set a $\frac{5}{8}$ " iron with seal #43844 on the west side of the stone and set a $\frac{5}{8}$ " iron with seal #43844 over the stone at the roads surface.