

# CERTIFICATE OF LOCATION OF GOVERNMENT CORNER

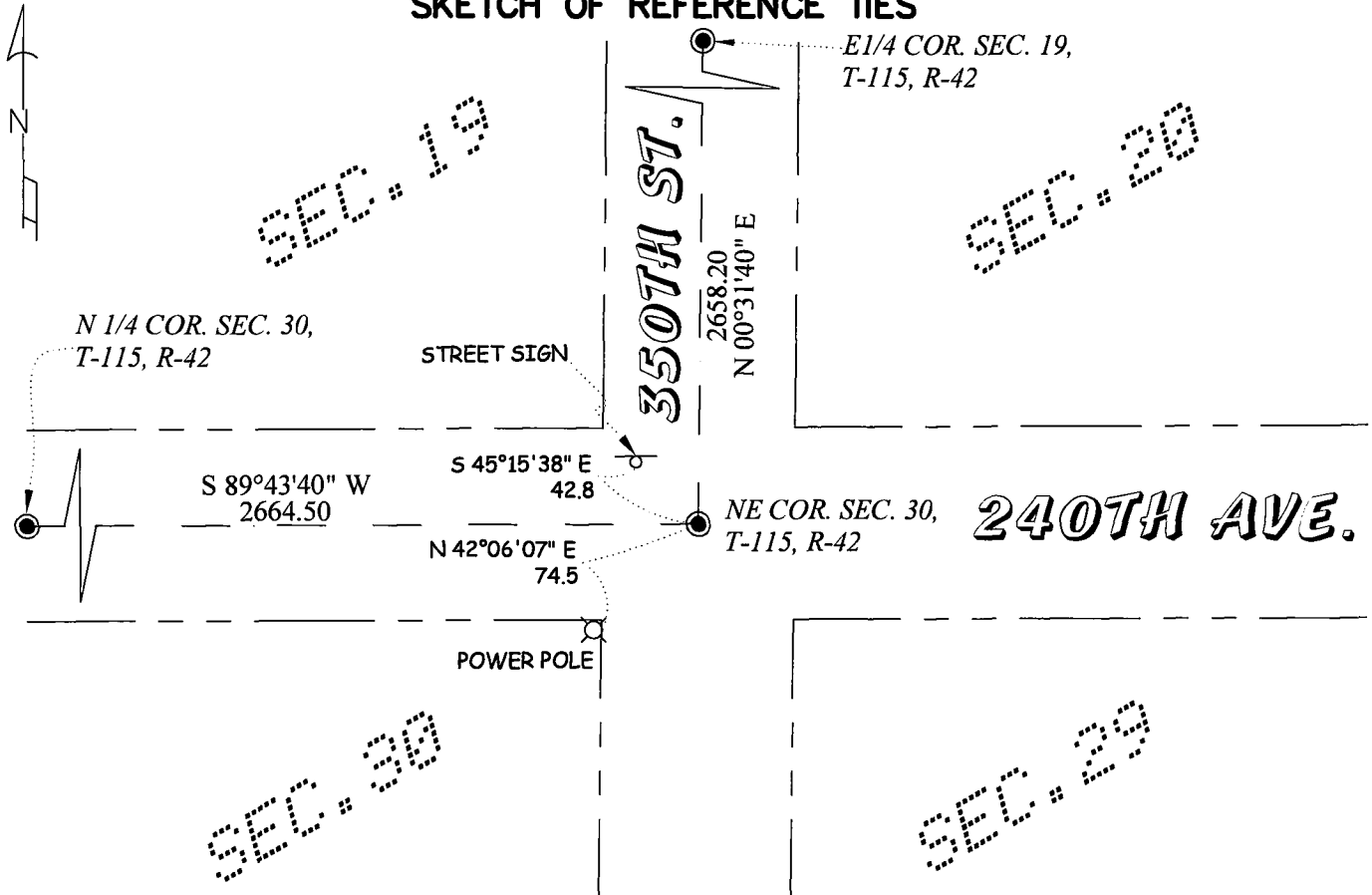
NORTHEAST Corner of Section 30, Township 115, Range 42, 5TH P.M.

STATE OF MINNESOTA, County of YELLOW MEDICINE

At the corner location shown on the sketch:

- On \_\_\_\_\_ found a \_\_\_\_\_  
Date
- left monument as found,  lowered monument,  removed monument (explain)
- On 2-9-2023 placed a 1/2" Iron Pipe, with Cap #42300  
Date

## SKETCH OF REFERENCE TIES



YELLOW MEDICINE, COUNTY COORDINATE.  
 NAD 83, 2011 ADJUSTMENT  
 N= 174798.285  
 E= 486709.613

Statement of evidence relative to this corner location is on back of page.

I hereby certify that this document and the data contained herein was prepared by me or under my direct supervision.

[Signature]  
Signature

02-20-2023  
Date

Registration No. 42300

- Land Surveyor  Professional Engineer  
 County Surveyor  County Engineer

Doc# 279681 Fee: \$0.00 2 Pages

Property & Public Services  
 Property Records Division  
 Yellow Medicine County, Minnesota  
 I hereby certify that the within instrument was filed on February 27, 2023 at 1:05 PM

Janel Timm, Yellow Medicine County Recorder

By Marit Nordang Deputy

**Statement of Evidence:**

**Northeast Corner of Section 30, Township 115, Range 42, Yellow Medicine County, Minnesota.**

October 1, 1864 - The original government survey was performed by C.E. Davis & J.W. Webb Jr.

April 23 & 24, 1959 - U.S. Fish and Wildlife Service conducted a survey in Section 19. Their field notes indicate that they set a spike at the intersection of the North - South, East-West County Roads. They give a distance of 2658.2 feet to the East Quarter corner and a distance of 2664.5 feet to the South Quarter corner of Section 19.

February 9, 2023 - O'Malley & Kron Land Surveyors, Inc performed a survey in Section 19. The corner location was computed based on the U.S. Fish and Wildlife survey information and surrounding corners that were found. The computed location was searched but no monument was found. The computed location was accepted as the corner location. A new monument was placed and new ties were made.