

CERTIFICATE OF LOCATION OF GOVERNMENT CORNER

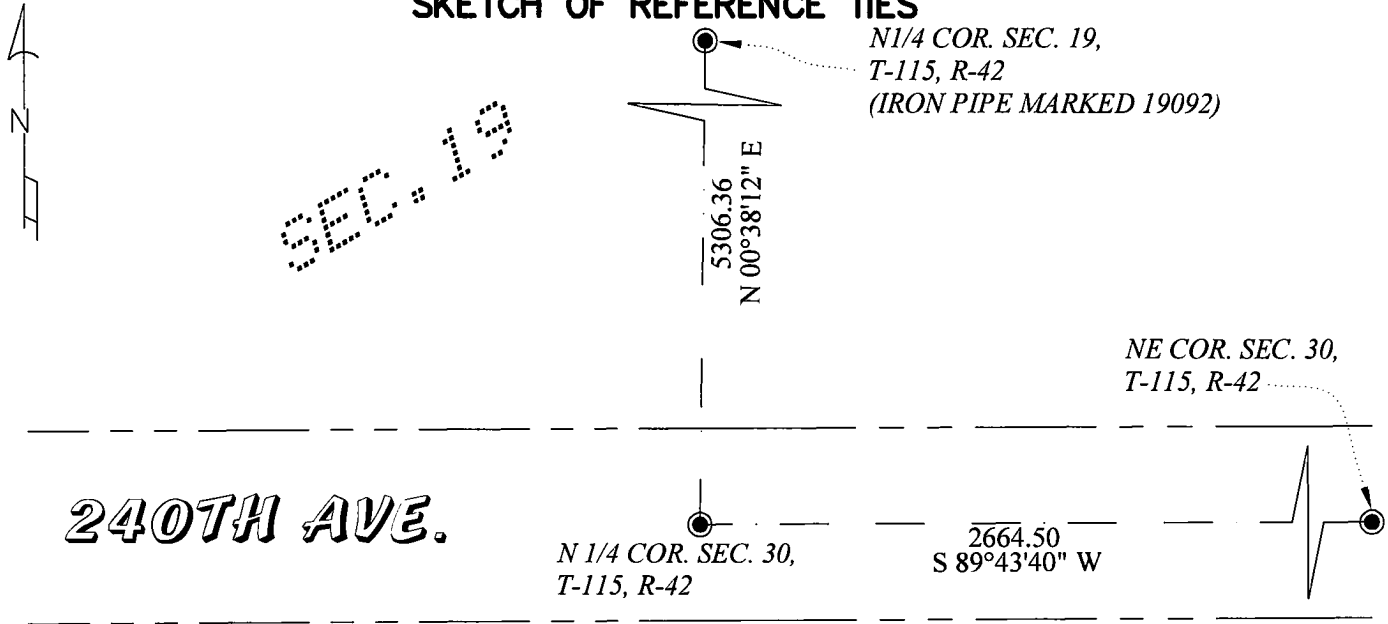
NORTH QUARTER Corner of Section 30, Township 115, Range 42, 5TH P.M.

STATE OF MINNESOTA, County of YELLOW MEDICINE

At the corner location shown on the sketch:

- On _____ found a _____
Date
- left monument as found, lowered monument, removed monument (explain)
- On 2-9-2023 placed a 1/2" Iron Pipe, with Cap #42300
Date

SKETCH OF REFERENCE TIES



YELLOW MEDICINE, COUNTY COORDINATE.
NAD 83, 2011 ADJUSTMENT
N= 174785.628
E= 484045.143

Statement of evidence relative to this corner location is on back of page.

I hereby certify that this document and the data contained herein was prepared by me or under my direct supervision.

[Signature] 02-20-2023
Signature Date

Registration No. 42300

- Land Surveyor Professional Engineer
- County Surveyor County Engineer

Doc# 279682 Fee: \$0.00 2 Pages
Property & Public Services
Property Records Division
Yellow Medicine County, Minnesota
I hereby certify that the within instrument was filed on February 27, 2023 at 1:10 PM

Janel Timm, Yellow Medicine County Recorder
By Marit Nordang Deputy

Statement of Evidence:

North Quarter Corner of Section 30, Township 115, Range 42, Yellow Medicine County, Minnesota.

October 1, 1864 - The original government survey was performed by C.E. Davis & J.W. Webb Jr.

April 23 & 24, 1959 - U.S. Fish and Wildlife Service conducted a survey in Section 19. Their field notes indicate that they set a spike at the centerline of a East - West Road and in line with a North-South fence. They give a distance of 2664.5 feet to the Southeast corner and a distance of 5306.4 feet to the North Quarter corner of Section 19.

February 9, 2023 - O'Malley & Kron Land Surveyors, Inc performed a survey in Section 19. The corner location was computed based on the U.S. Fish and Wildlife survey information and surrounding corners that were found. The computed location was searched but no monument was found. The computed location was accepted as the corner location. A new monument was placed and new ties were made.