

Corners to be Indexed

N1/4 SEC. 20-115-45
 NE SEC. 20-115-45
 E1/4 SEC. 20-115-45
 SW SEC. 20-115-45 (NE 30-115-45)

Doc# 280448 Fee: \$0.00 2 Pages

Property & Public Services
 Property Records Division
 Yellow Medicine County, Minnesota
 I hereby certify that the within instrument
 was filed on July 3, 2023 at 9:00 AM

I hereby certify that this document and the data
 contained herein was prepared by me or under
 my direct supervision

[Signature] 6/30/2023
 Daniel L. Bueltel Date

Janel Timm, Yellow Medicine County Recorder

By Marit Nordang Deputy

License No. 43844

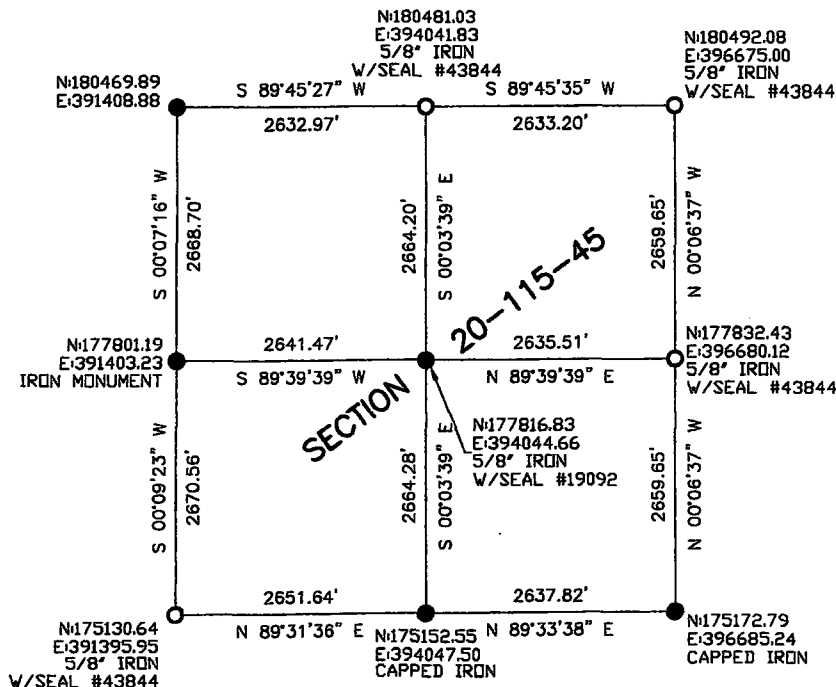
CERTIFICATE OF LOCATION OF GOVERNMENT CORNER

Land survey monuments situated in Section 20, Township 115, Range 45, 5TH P.M.

STATE OF MINNESOTA, County of YELLOW MEDICINE



- FOUND MONUMENT
- SET MONUMENT



Statement of Evidence

N1/4 20-115-45

In 1858, W.J. Neely layed out the township lines.

In June of 1871, Lewis Harrington subdivided the township.

On June 14, 2023 Bueltel-Moseng Land Surveying searched and found a bent $\frac{5}{8}$ " iron. We removed the iron and searched below and found nothing. We accepted the position of hte iron and set a $\frac{5}{8}$ " iron with seal #43844, corner lined up with occupation lines to the north and south.

NE COR. 20-115-45

In 1858, W.J. Neely layed out the township lines.

In June of 1871, Lewis Harrington subdivided the township.

In 1945, Yellow Medicine County highway records show ties to the corner.

On June 14, 2023, Bueltel-Moseng Land Surveying found a large spike, removed the spike and found nothing beneath, and all ties from the county records were gone. We accepted the position of the spike and set a $\frac{5}{8}$ " iron with seal #43844, corner fell in the center of the intersection.

E1/4 20-115-45

In 1858, W.J. Neely layed out the township lines.

In June of 1871, Lewis Harrington subdivided the township.

On June 14, 2023, Bueltel-Moseng Land Surveying searched and found nothing at the corner. Set a $\frac{5}{8}$ " iron with seal with seal #43844 midway and on line between the section corners, the corner fell in line with occupation line to the west.

SW 20-115-45 (NE 30-115-45)

In 1858, W.J. Neely layed out the township lines.

In June of 1871, Lewis Harrington subdivided the township.

in April of 1969, Yellow Medicine County highway records show ties to the corner and the monument being 2 feet deep.

On June 14, 2023 Bueltel-Moseng Land Surveying searched and found nothing at the corner. We set a $\frac{5}{8}$ " iron with seal #43844 using the existing ties from the county highway records.