

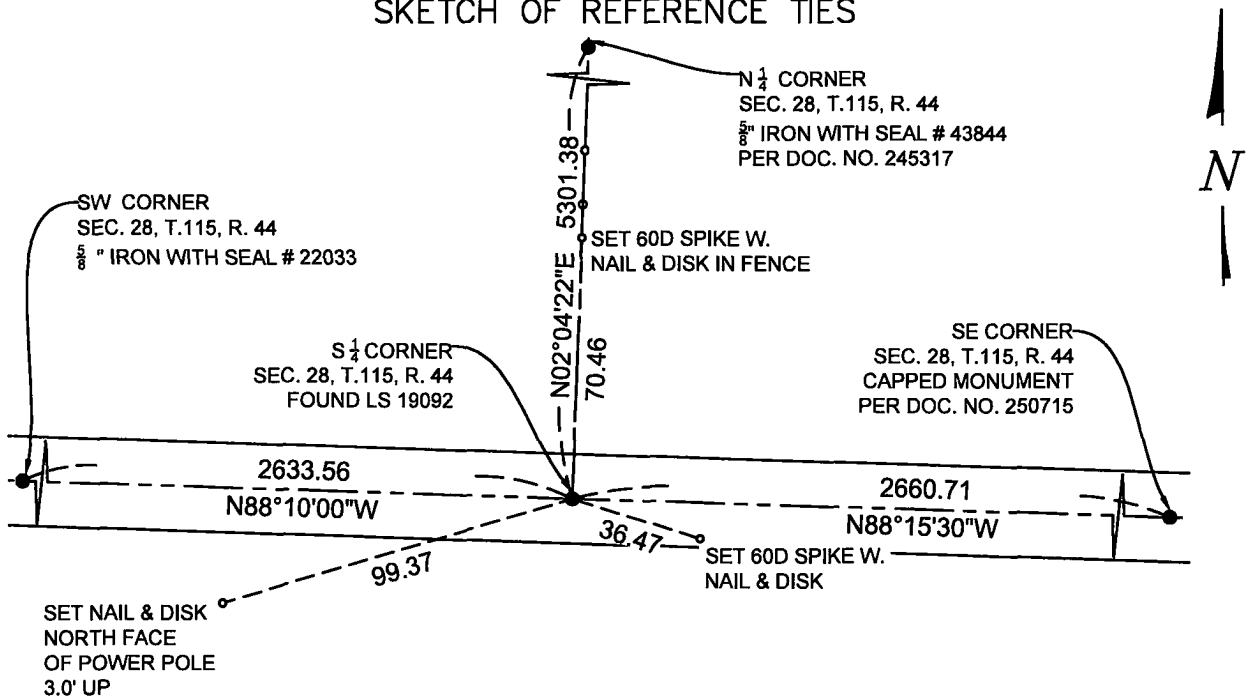
CERTIFICATE OF LOCATION OF GOVERNMENT CORNER

SOUTH QUARTER Corner of Section 28, Township 115 N., Range 44 W., 5th P.M.
STATE OF MINNESOTA, County of YELLOW MEDICINE.

At the corner location shown on the sketch:

- On 6-7-2023 found a YELLOW CAP MARKED WITH LS 19092
date
- DOWN 1.25' BELOW GRADE ON CL EAST WEST AND FENCE EXTENSION NORTH
- left monument as found, lowered monument, removed monument (explain)
- On _____ placed a _____
date

SKETCH OF REFERENCE TIES



Minnesota State Plane Coordinate System
South Zone, US Feet, Grid Scale 1.0
NAD83 (2011)
N = 967052.01
E = 2062096.10

NOT TO SCALE

Statement of evidence relative to this corner location is on back of this page.

I hereby certify that this document and the data contained herein was prepared by me or under my direct supervision.

Janel Timm
SIGNATURE

9-5-2023
DATE

Registration No. 48258

- Land Surveyor Professional Engineer
 County Surveyor County Engineer

Doc# 280859 Fee: \$0.00 2 Pages

Property & Public Services
Property Records Division
Yellow Medicine County, Minnesota
I hereby certify that the within instrument was filed on September 11, 2023 at 11:05 AM

Janel Timm, Yellow Medicine County Recorder

By *Marit Nordang* Deputy

STATEMENT OF EVIDENCE

S $\frac{1}{4}$ 28-115-44

KLJ contacted the following for survey information

MN GLO/BLM original survey records
Yellow Medicine County Recorder's Office
MNDOT office in Willmar
Yellow Medicine County Highway Engineer's Office
Bonnema Surveys, Inc. of Willmar
O'Malley & Kron Land Surveyors, Inc. of Willmar
Bueltel-Moseng Land Surveying of Marshall
Marihart Surveying, P.A. of Dawson
Egan Field & Nowak, Inc of New Brighton
E.G. Rud & Sons, Inc. of Hutchinson

In September, 1871, Lewis Harrington, General Land Office Deputy Surveyor performing the original survey of the subdivision lines set a wood post in a raised mound.

In 1906 County Surveyor John Norgaard's "Red Book", page 479, on file at the Yellow Medicine County Recorder's Office shows he "set 1 bolt in Govt. mound." No distances are made to other corners. It appears he resurveyed in 1924 off the same section subdivision.

In October, 2006, Roy Marihart, MN LS 19092 filed a Certificate of Survey at the Yellow Medicine County Recorder's Office in the SE $\frac{1}{4}$ of said Section 28. These are stored in a file as courtesy copies, and are not recorded. They are available for viewing and copies can be made upon request. The Certificate of Survey indicates a found monument at the South $\frac{1}{4}$ corner of said Section 28 and that he set the SE corner of Section 28.

On June 7, 2023, KLJ dug and found LS 19092 down 1.25'. KLJ found no evidence of the original corner or other corner monuments and accepted the monument as the South $\frac{1}{4}$ corner.

On June 20, 2023, KLJ contacted Roy Marihart, MN LS 19092 and he stated that he is retired and he is not going to file corner certificates on any of his Section corner monuments.