

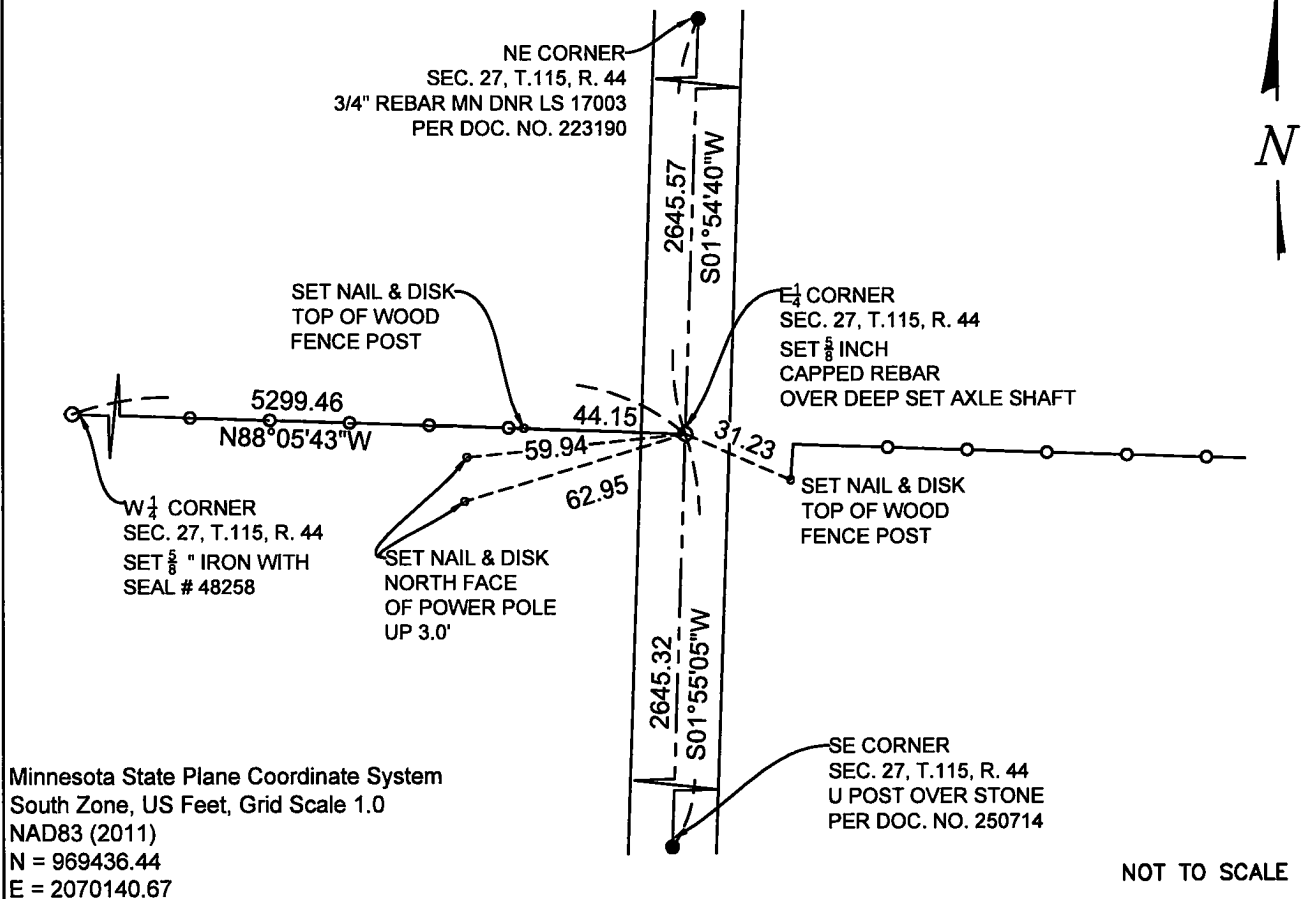
CERTIFICATE OF LOCATION OF GOVERNMENT CORNER

EAST QUARTER Corner of Section 27, Township 115 N., Range 44 W., 5th P.M.
STATE OF MINNESOTA, County of YELLOW MEDICINE.

At the corner location shown on the sketch:

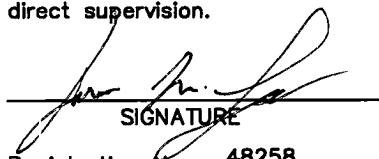
- On 6-7-2023 found a 2"X3" AXLE SHAFT DOWN 2.0' ON CL NS
date
- AND FENCE EXTENSION EW
- left monument as found, lowered monument, removed monument (explain)
- On 7-19-2023 placed a 5/8 INCH BY 18" LONG REBAR WITH CAP MARKED
date
MN LS 48258 AT THE LOCATION SHOWN BELOW.

SKETCH OF REFERENCE TIES



Statement of evidence relative to this corner location is on back of this page.

I hereby certify that this document and the data contained herein was prepared by me or under my direct supervision.


SIGNATURE

9-5-2023
DATE

Registration No. 48258

- Land Surveyor
- Professional Engineer
- County Surveyor
- County Engineer

Doc# 280861 Fee: \$0.00 2 Pages

Property & Public Services
Property Records Division
Yellow Medicine County, Minnesota
I hereby certify that the within instrument was filed on September 11, 2023 at 11:15 AM

Janel Timm, Yellow Medicine County Recorder

By Marit Nordang Deputy

STATEMENT OF EVIDENCE

E $\frac{1}{4}$ 27-115-44

KLJ contacted the following for survey information

MN GLO/BLM original survey records
Yellow Medicine County Recorder's Office
MNDOT office in Willmar
Yellow Medicine County Highway Engineer's Office
Bonnema Surveys, Inc. of Willmar
O'Malley & Kron Land Surveyors, Inc. of Willmar
Bueltel-Moseng Land Surveying of Marshall
Marihart Surveying, P.A. of Dawson
Egan Field & Nowak, Inc of New Brighton
E.G. Rud & Sons, Inc. of Hutchinson

In September, 1871, Lewis Harrington, General Land Office Deputy Surveyor performing the original survey of the subdivision lines set a wood post in a raised mound.

On June 7, 2023, KLJ dug and found an axle shaft down 2.0' on centerline north south and fence line extensions east and west. KLJ found no evidence of the original corner or other corner monuments and accepted the monument as the East $\frac{1}{4}$ corner.

On July, 19, 2023, KLJ set a $\frac{5}{8}$ " rebar with MN LS 48258 down 0.50' below grade. Set monument in same location as found axle shaft due to excessive depth.