

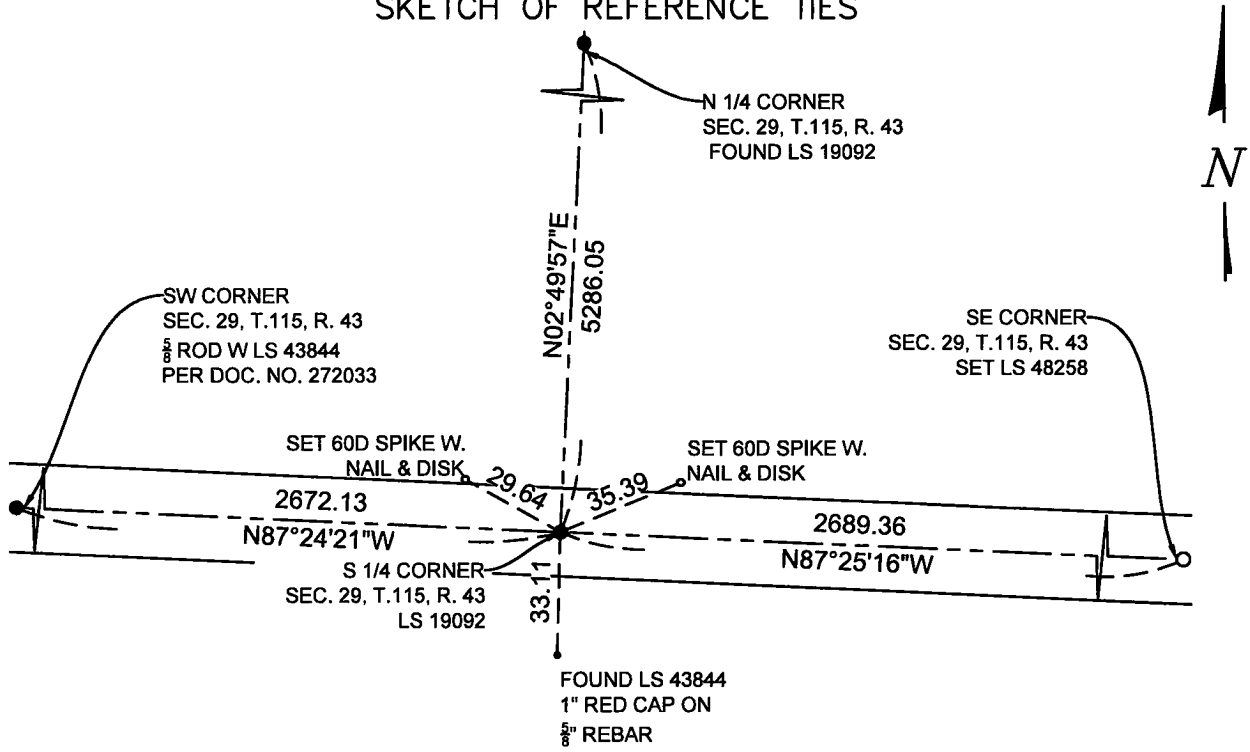
CERTIFICATE OF LOCATION OF GOVERNMENT CORNER

SOUTH QUARTER Corner of Section 29, Township 115 N., Range 43 W., 5th P.M.
STATE OF MINNESOTA, County of YELLOW MEDICINE.

At the corner location shown on the sketch:

- On 6-7-2023 found a YELLOW CAP MARKED WITH LS 19092
date
- DOWN 0.40' BELOW GRADE ON CL EAST WEST AND FIELD DIVISION SOUTH
- left monument as found, lowered monument, removed monument (explain)
- On _____ placed a _____
date

SKETCH OF REFERENCE TIES



Minnesota State Plane Coordinate System
South Zone, US Feet, Grid Scale 1.0
NAD83 (2011)
N = 966227.35
E = 2088718.58

NOT TO SCALE

Statement of evidence relative to this corner location is on back of this page.

I hereby certify that this document and the data contained herein was prepared by me or under my direct supervision.

Janel Timm
SIGNATURE

9-5-2023
DATE

Registration No. 48258

- Land Surveyor Professional Engineer
 County Surveyor County Engineer

Doc# 280863 Fee: \$0.00 2 Pages

Property & Public Services
Property Records Division
Yellow Medicine County, Minnesota
I hereby certify that the within instrument was filed on September 11, 2023 at 11:25 AM

Janel Timm, Yellow Medicine County Recorder

By *Marit Nordang* Deputy

STATEMENT OF EVIDENCE

S $\frac{1}{4}$ 29-115-43

KLJ contacted the following for survey information

MN GLO/BLM original survey records
Yellow Medicine County Recorder's Office
MNDOT office in Willmar
Yellow Medicine County Highway Engineer's Office
Bonnema Surveys, Inc. of Willmar
O'Malley & Kron Land Surveyors, Inc. of Willmar
Bueltel-Moseng Land Surveying of Marshall
Marihart Surveying, P.A. of Dawson
Egan Field & Nowak, Inc of New Brighton
E.G. Rud & Sons, Inc. of Hutchinson

In November, 1867, David Watson, General Land Office Deputy Surveyor performing the original survey of the subdivision lines set a wood post in mound with pits.

In July, 1913 County Surveyor John Norgaard's "Red Book", page 300, on file at the Yellow Medicine County Recorder's Office shows no distances east, west or south. He notes that he found stake in the Government mound and set a stone.

On June 7, 2023, KLJ dug and found a $\frac{1}{2}$ " rebar capped iron monument set by Roy Marihart, MN LS 19092, and accepted the monument as the South $\frac{1}{4}$ corner. Other found monuments indicates this corner is being used by other Surveyors as the South $\frac{1}{4}$ corner.

On June 20, 2023, KLJ contacted Roy Marihart, MN LS 19092 and he stated that he is retired and he is not going to file corner certificates on any of his Section corner monuments.