

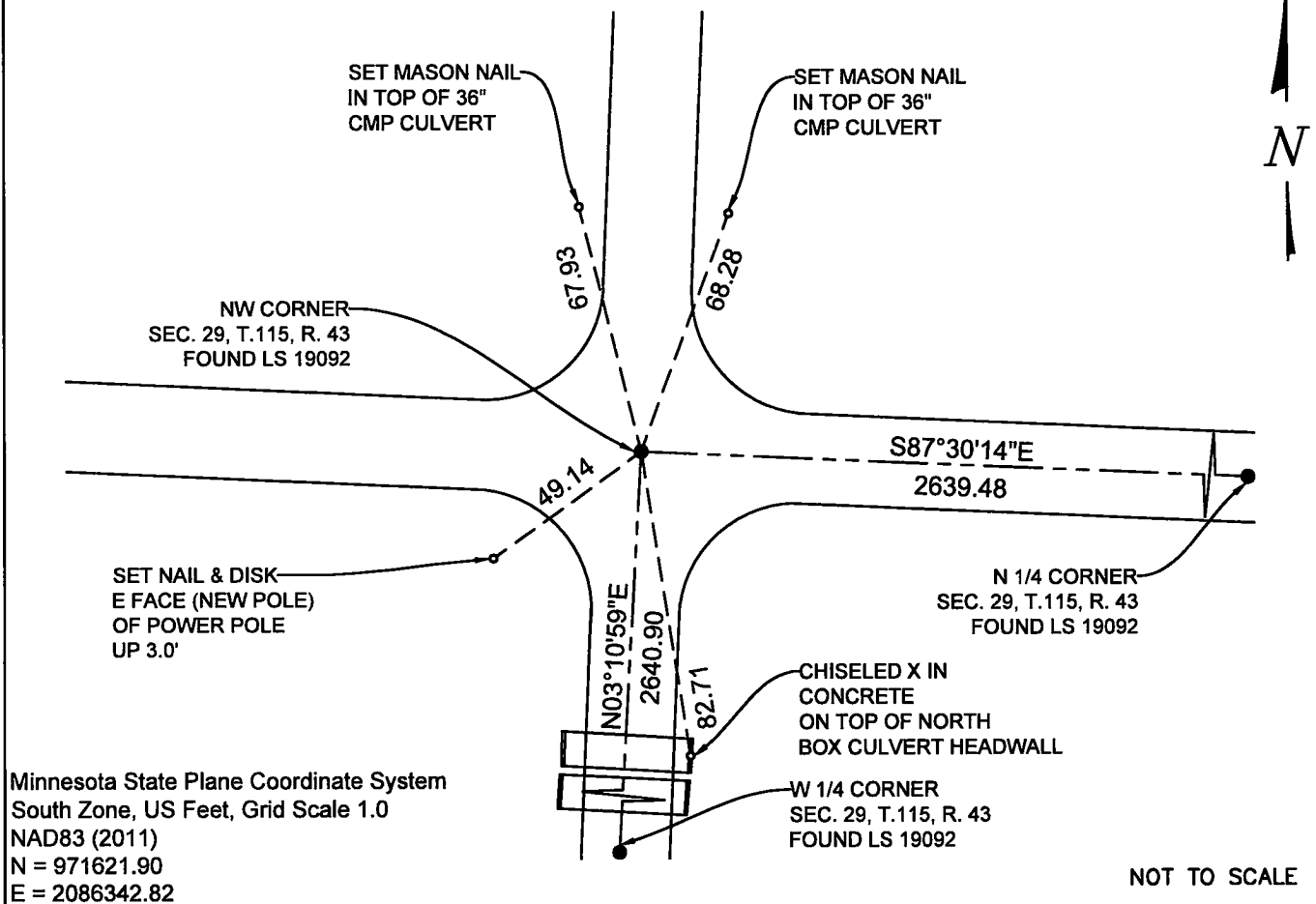
CERTIFICATE OF LOCATION OF GOVERNMENT CORNER

NORTHWEST Corner of Section 29, Township 115 N., Range 43 W., 5th P.M.
STATE OF MINNESOTA, County of YELLOW MEDICINE.

At the corner location shown on the sketch:

- On 6-7-2023 found a YELLOW CAP MARKED WITH LS 19092
date
- DOWN 0.30' BELOW GRADE ON CL - CL OF TOWNSHIP ROADS.
- left monument as found, lowered monument, removed monument (explain)
- On _____ placed a _____
date

SKETCH OF REFERENCE TIES



Statement of evidence relative to this corner location is on back of this page.

I hereby certify that this document and the data contained herein was prepared by me or under my direct supervision.

[Signature]
SIGNATURE

9-5-2023
DATE

Registration No. 48258

- Land Surveyor Professional Engineer
- County Surveyor County Engineer

Doc# 280865 Fee: \$0.00 2 Pages

Property & Public Services
Property Records Division
Yellow Medicine County, Minnesota
I hereby certify that the within instrument was filed on September 11, 2023 at 11:35 AM

Janel Timm, Yellow Medicine County Recorder

By Marit Nordang Deputy

STATEMENT OF EVIDENCE

NW 29-115-43

KLJ contacted the following for survey information

MN GLO/BLM original survey records
Yellow Medicine County Recorder's Office
MNDOT office in Willmar
Yellow Medicine County Highway Engineer's Office
Bonnema Surveys, Inc. of Willmar
O'Malley & Kron Land Surveyors, Inc. of Willmar
Bueltel-Moseng Land Surveying of Marshall
Marihart Surveying, P.A. of Dawson
Egan Field & Nowak, Inc of New Brighton
E.G. Rud & Sons, Inc. of Hutchinson

In November, 1867, David Watson, General Land Office Deputy Surveyor performing the original survey of the subdivision lines set a wood post in mound with pits.

In June, 1911 County Surveyor John Norgaard's "Red Book", page 243, on file at the Yellow Medicine County Recorder's Office shows a distance of 2639.00 feet south to the West 1/4 Section corner and an additional 2639.00 feet south to the Southwest Section corner. He notes that the 1/4 corner is located on line and equal distances between section corners. He does not show or state what he found for the Northwest Section corner.

On June 7, 2023, KLJ dug and found a $\frac{1}{2}$ " rebar capped iron monument set by Roy Marihart, MN LS 19092, and accepted the monument as the Northwest corner. It appears that Roy set his iron at a straight line single proportion east and south from the Northwest corner position. Searched for Highway department ties and all ties were gone.

On June 20, 2023, KLJ contacted Roy Marihart, MN LS 19092 and he stated that he is retired and he is not going to file corner certificates on any of his Section corner monuments.