

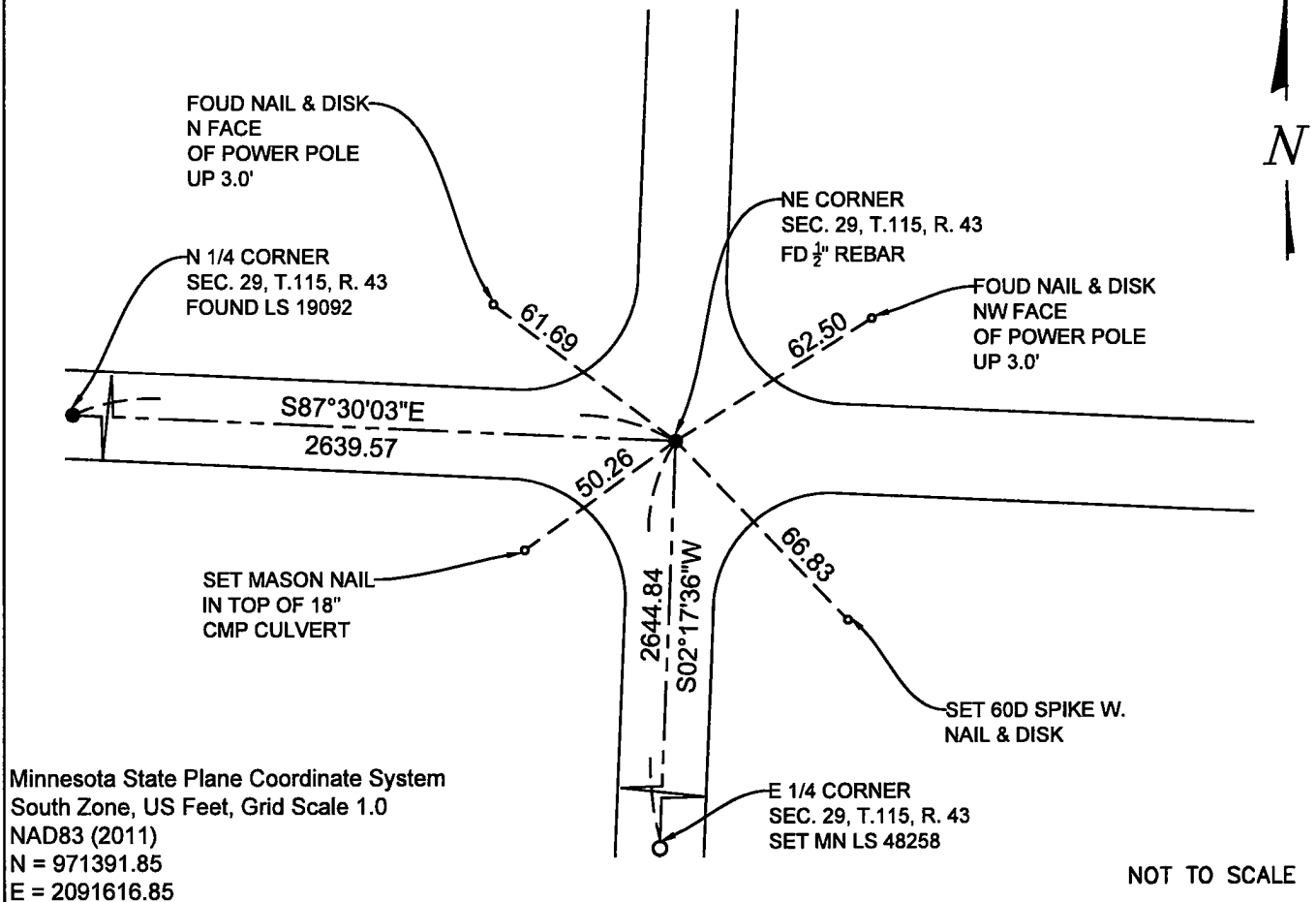
# CERTIFICATE OF LOCATION OF GOVERNMENT CORNER

NORTHEAST Corner of Section 29, Township 115 N., Range 43 W., 5th P.M.  
STATE OF MINNESOTA, County of YELLOW MEDICINE.

At the corner location shown on the sketch:

- On 6-7-2023 found a 1/2"x 4" REBAR FLUSH IN BITUMINOUS  
date
- left monument as found,  lowered monument,  removed monument (explain)
- On 9-1-2023 placed a 5/8 INCH BY 18" LONG REBAR WITH CAP MARKED  
date  
MN LS 48258 AT THE LOCATION SHOWN BELOW.

## SKETCH OF REFERENCE TIES



Statement of evidence relative to this corner location is on back of this page.

I hereby certify that this document and the data contained herein was prepared by me or under my direct supervision.

*Janel Timm*      7-5-2023  
SIGNATURE      DATE

Registration No. 48258

- Land Surveyor       Professional Engineer
- County Surveyor       County Engineer

Doc# 280867 Fee: \$0.00 2 Pages

Property & Public Services  
Property Records Division  
Yellow Medicine County, Minnesota  
I hereby certify that the within instrument was filed on September 11, 2023 at 11:45 AM

Janel Timm, Yellow Medicine County Recorder

By *Marit Nordang* Deputy

# STATEMENT OF EVIDENCE

NE 29-115-43

KLJ contacted the following for survey information

MN GLO/BLM original survey records  
Yellow Medicine County Recorder's Office  
MNDOT office in Willmar  
Yellow Medicine County Highway Engineer's Office  
Bonnema Surveys, Inc. of Willmar  
O'Malley & Kron Land Surveyors, Inc. of Willmar  
Bueltel-Moseng Land Surveying of Marshall  
Marihart Surveying, P.A. of Dawson  
Egan Field & Nowak, Inc of New Brighton  
E.G. Rud & Sons, Inc. of Hutchinson

In November, 1867, David Watson, General Land Office Deputy Surveyor performing the original survey of the subdivision lines set a wood post in mound with pits.

On June 7, 2023, KLJ found a  $\frac{1}{2}$ " x 4" rebar on the centerline of a bituminous North South County Highway and East West Township roadways. The rebar was lifted and no other magnetic draws were detected. It is uncertain who set the rebar. The rebar fits a straight line single proportion west and south based on found monuments. The rebar was reset in the same location. The rebar was accepted as the NE corner of Section 29. Searched for Highway department ties and all ties were gone.

On September, 1, 2023, KLJ removed the  $\frac{1}{2}$ " x 4" rebar and set a  $\frac{5}{8}$ " x 18" rebar with MN LS 48258 down 0.30' below grade in the same location as the  $\frac{1}{2}$ " x 4" rebar.