

CERTIFICATE OF LOCATION OF GOVERNMENT CORNER

EAST QUARTER Corner of Section 29, Township 115 N., Range 43 W., 5th P.M.
STATE OF MINNESOTA, County of YELLOW MEDICINE.

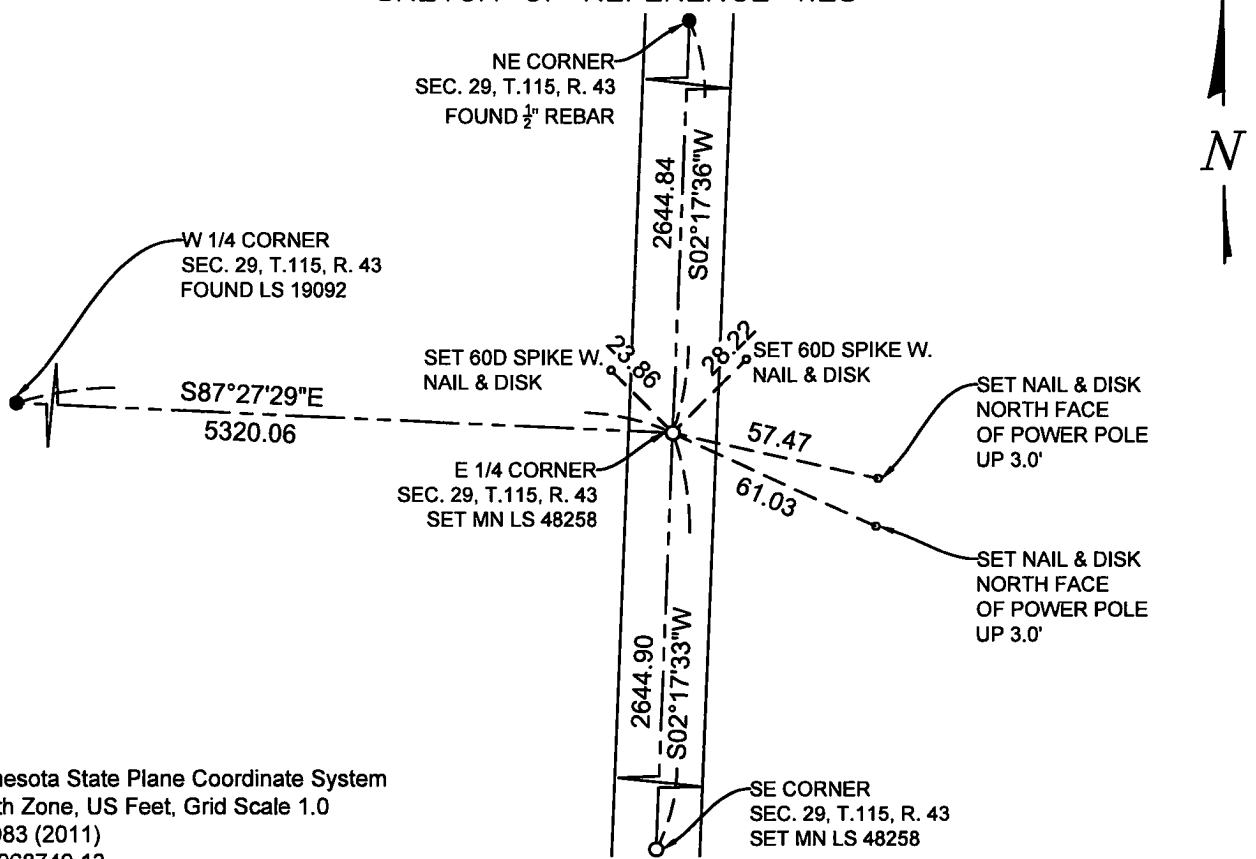
At the corner location shown on the sketch:

On 6-7-2023 found a SMALL 1/2" PK NAIL FLUSH IN BITUMINOUS
date

left monument as found, lowered monument, removed monument (explain)

On 7-19-2023 placed a 5/8 INCH BY 18" LONG REBAR WITH CAP MARKED
date
MN LS 48258 AT THE LOCATION SHOWN BELOW.

SKETCH OF REFERENCE TIES



Minnesota State Plane Coordinate System
South Zone, US Feet, Grid Scale 1.0
NAD83 (2011)
N = 968749.13
E = 2091511.02

NOT TO SCALE

Statement of evidence relative to this corner location is on back of this page.

I hereby certify that this document and the data contained herein was prepared by me or under my direct supervision.

[Signature]
SIGNATURE

9-5-2023
DATE

Registration No. 48258

- Land Surveyor
- Professional Engineer
- County Surveyor
- County Engineer

Doc# 280868 Fee: \$0.00 2 Pages

Property & Public Services
Property Records Division
Yellow Medicine County, Minnesota
I hereby certify that the within instrument was filed on September 11, 2023 at 11:50 AM

Janel Timm, Yellow Medicine County Recorder

By Marit Nordang Deputy

STATEMENT OF EVIDENCE

E $\frac{1}{4}$ 29-115-43

KLJ contacted the following for survey information

MN GLO/BLM original survey records
Yellow Medicine County Recorder's Office
MNDOT office in Willmar
Yellow Medicine County Highway Engineer's Office
Bonnema Surveys, Inc. of Willmar
O'Malley & Kron Land Surveyors, Inc. of Willmar
Bueltel-Moseng Land Surveying of Marshall
Marihart Surveying, P.A. of Dawson
Egan Field & Nowak, Inc of New Brighton
E.G. Rud & Sons, Inc. of Hutchinson

In November, 1867, David Watson, General Land Office Deputy Surveyor performing the original survey of the subdivision lines set a wood post in mound with pits.

On June 7, 2023, KLJ found a small $\frac{1}{2}$ " PK Magnetic Survey Nail on the centerline of a bituminous North South County Highway. The nail was lifted and no other magnetic draws were detected, this location has a large roadway fill. It is uncertain who set the nail but it appears that it was set at a straight line single proportion north and south for the East $\frac{1}{4}$ corner position. The PK nail was reset in the same location. The PK nail was accepted as the E $\frac{1}{4}$ of Section 29.

On July, 19, 2023, KLJ removed the PK nail and set a $\frac{5}{8}$ " rebar with MN LS 48258 down 0.50' below grade in the same location as the PK nail.