

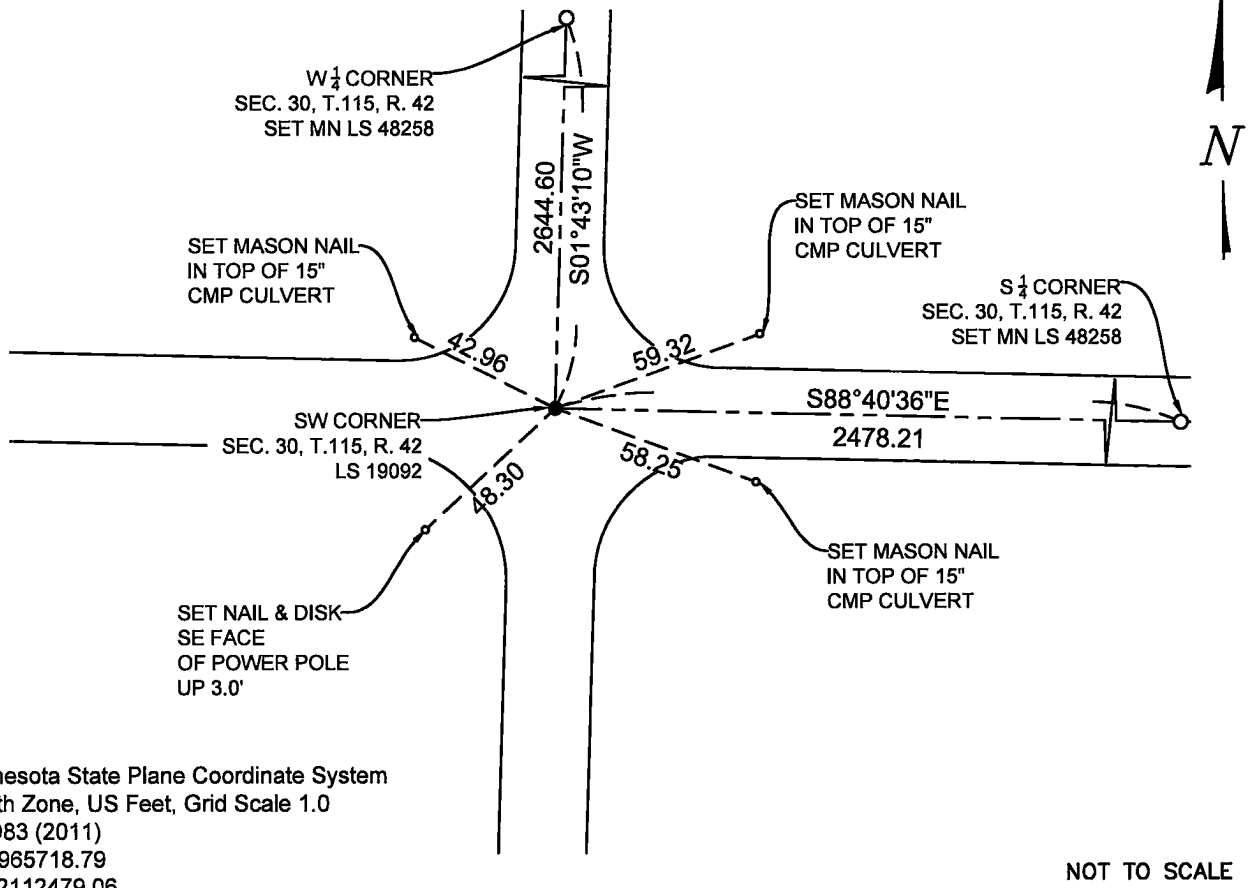
CERTIFICATE OF LOCATION OF GOVERNMENT CORNER

SOUTHWEST Corner of Section 30, Township 115 N., Range 42 W., 5th P.M.
STATE OF MINNESOTA, County of YELLOW MEDICINE.

At the corner location shown on the sketch:

- On 6-7-2023 found a YELLOW CAP MARKED WITH LS 19092
date
DOWN 0.30' BELOW GRADE ON CL-CL OF TOWNSHIP ROAD
 left monument as found, lowered monument, removed monument (explain)
- On _____ placed a _____
date

SKETCH OF REFERENCE TIES



Minnesota State Plane Coordinate System
 South Zone, US Feet, Grid Scale 1.0
 NAD83 (2011)
 N = 965718.79
 E = 2112479.06

NOT TO SCALE

Statement of evidence relative to this corner location is on back of this page.

I hereby certify that this document and the data contained herein was prepared by me or under my direct supervision.

[Signature]
 SIGNATURE

7-5-2023
 DATE

Registration No. 48258

- Land Surveyor Professional Engineer
 County Surveyor County Engineer

Doc# 280870 Fee: \$0.00 2 Pages

Property & Public Services
 Property Records Division
 Yellow Medicine County, Minnesota
 I hereby certify that the within instrument was filed on September 11, 2023 at 12:00 PM

Janel Timm, Yellow Medicine County Recorder

By Marit Nordang Deputy

STATEMENT OF EVIDENCE

SW 30-115-42

KLJ contacted the following for survey information

MN GLO/BLM original survey records
Yellow Medicine County Recorder's Office
MNDOT office in Willmar
Yellow Medicine County Highway Engineer's Office
Bonnema Surveys, Inc. of Willmar
O'Malley & Kron Land Surveyors, Inc. of Willmar
Bueltel-Moseng Land Surveying of Marshall
Marihart Surveying, P.A. of Dawson
Egan Field & Nowak, Inc of New Brighton
E.G. Rud & Sons, Inc. of Hutchinson

In September, 1858, WJ Neely, General Land Office Deputy Surveyor performing the original survey of the subdivision lines entered a pond east and west 75.0 chains north of the southwest corner of said Section 30, he made a mound and pits 8 links south.

In 1917, County Surveyor John Norgaard's "Red Book", page 540, on file at the Yellow Medicine County Recorder's Office shows a distance of 2477.00' east to the South $\frac{1}{4}$ corner and notes a fence running south. The map shows a distance of 2657.00' east from the South $\frac{1}{4}$ to the Southeast corner of Section 30.

On June 7, 2023, KLJ dug and found a $\frac{1}{2}$ " rebar capped iron monument set by Roy Marihart, MN LS 19092, and accepted the monument as the Southwest corner.

On June 20, 2023, KLJ contacted Roy Marihart, MN LS 19092 and he stated that he is retired and he is not going to file corner certificates on any of his Section corner monuments.