

CERTIFICATE OF LOCATION OF GOVERNMENT CORNER

NORTHWEST Corner of Section 30, Township 115 N., Range 42 W., 5th P.M.
STATE OF MINNESOTA, County of YELLOW MEDICINE.

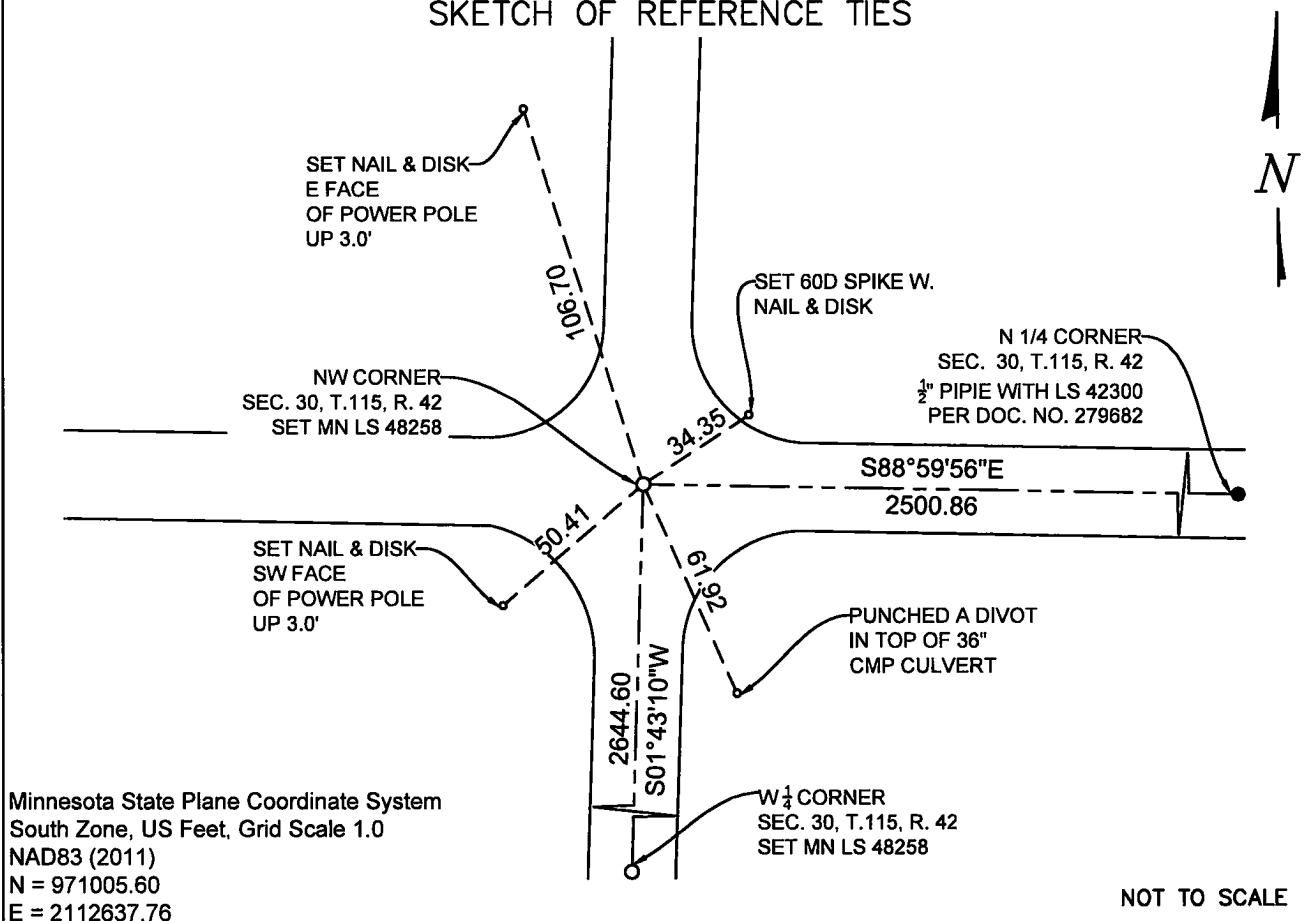
At the corner location shown on the sketch:

On 6-7-2023 found a 60D SPIKE WITH REMNANT SURVEYORS TAPE
date
DOWN 0.30' BELOW GRADE ON CL-CL OF TOWNSHIP ROAD

left monument as found, lowered monument, removed monument (explain)

On 7-19-2023 placed a 5/8 INCH BY 18" LONG REBAR WITH CAP MARKED
date
MN LS 48258 AT THE LOCATION SHOWN BELOW.

SKETCH OF REFERENCE TIES



Minnesota State Plane Coordinate System
South Zone, US Feet, Grid Scale 1.0
NAD83 (2011)
N = 971005.60
E = 2112637.76

NOT TO SCALE

Statement of evidence relative to this corner location is on back of this page.

I hereby certify that this document and the data contained herein was prepared by me or under my direct supervision.

[Signature] 9-5-2023
SIGNATURE DATE

Registration No. 48258

- Land Surveyor
- Professional Engineer
- County Surveyor
- County Engineer

Doc# 280871 Fee: \$0.00 2 Pages

Property & Public Services
Property Records Division
Yellow Medicine County, Minnesota
I hereby certify that the within instrument was filed on September 11, 2023 at 12:05 PM

Janel Timm, Yellow Medicine County Recorder

By Marit Nordang Deputy

STATEMENT OF EVIDENCE

NW 30-115-42

KLJ contacted the following for survey information

MN GLO/BLM original survey records
Yellow Medicine County Recorder's Office
MNDOT office in Willmar
Yellow Medicine County Highway Engineer's Office
Bonnema Surveys, Inc. of Willmar
O'Malley & Kron Land Surveyors, Inc. of Willmar
Bueltel-Moseng Land Surveying of Marshall
Marihart Surveying, P.A. of Dawson
Egan Field & Nowak, Inc of New Brighton
E.G. Rud & Sons, Inc. of Hutchinson

In September, 1858, WJ Neely, General Land Office Deputy Surveyor performing the original survey of the subdivision lines set a wood post, deposited coal, made mound trench and pits.

On June 7, 2023, KLJ dug and found a 60d spike down 0.50' on centerline/centerline of the township road intersection. The spike was lifted and no other magnetic draws were present. The 60d spike was reset and accepted as the Northwest Section corner. All Highway Department ties are gone.

On July, 19, 2023, KLJ removed the 60d spike and dug a 3x3x3 hole with a large electric jackhammer and generator and found nothing. KLJ set a $\frac{5}{8}$ " rebar with MN LS 48258 down 0.50' below grade in the same location as the 60d spike.