

CERTIFICATE OF LOCATION OF GOVERNMENT CORNER

WEST QUARTER Corner of Section 30, Township 115 N., Range 42 W., 5th P.M.
STATE OF MINNESOTA, County of YELLOW MEDICINE.

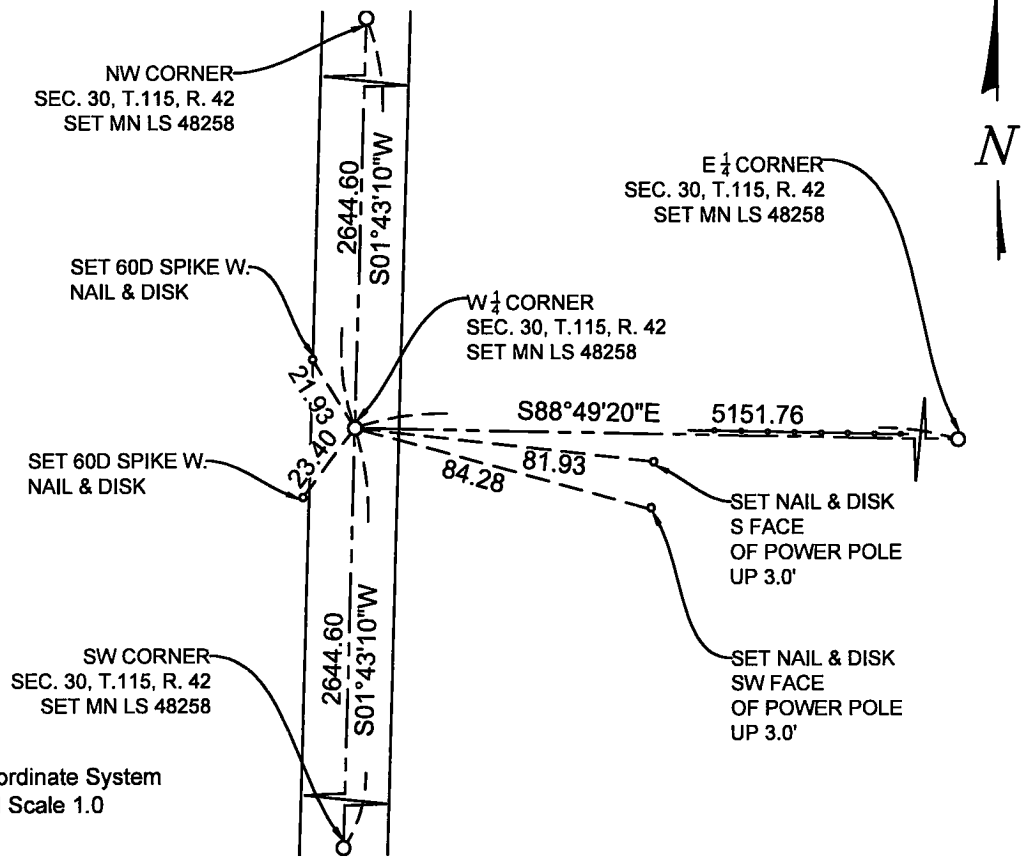
At the corner location shown on the sketch:

On _____ found a _____
date

left monument as found, lowered monument, removed monument (explain)

On 7-19-2023 placed a 5/8 INCH BY 18" LONG REBAR WITH CAP MARKED
date
MN LS 48258 AT THE LOCATION SHOWN BELOW.

SKETCH OF REFERENCE TIES



Minnesota State Plane Coordinate System
South Zone, US Feet, Grid Scale 1.0
NAD83 (2011)
N = 968362.19
E = 2112558.41

NOT TO SCALE

Statement of evidence relative to this corner location is on back of this page.

I hereby certify that this document and the data contained herein was prepared by me or under my direct supervision.

[Signature]
SIGNATURE

9-5-2023
DATE

Registration No. 48258

- Land Surveyor
- Professional Engineer
- County Surveyor
- County Engineer

Doc# 280872 Fee: \$0.00 2 Pages

Property & Public Services
Property Records Division
Yellow Medicine County, Minnesota
I hereby certify that the within instrument was filed on September 11, 2023 at 12:10 PM

Janel Timm, Yellow Medicine County Recorder

By Marit Nordang Deputy

STATEMENT OF EVIDENCE

W 30-115-42

KLJ contacted the following for survey information

MN GLO/BLM original survey records
Yellow Medicine County Recorder's Office
MNDOT office in Willmar
Yellow Medicine County Highway Engineer's Office
Bonnema Surveys, Inc. of Willmar
O'Malley & Kron Land Surveyors, Inc. of Willmar
Bueltel-Moseng Land Surveying of Marshall
Marihart Surveying, P.A. of Dawson
Egan Field & Nowak, Inc of New Brighton
E.G. Rud & Sons, Inc. of Hutchinson

In September, 1858, WJ Neely, General Land Office Deputy Surveyor performing the original survey of the subdivision lines set a wood post, deposited coal, made mound trench and pits.

On June 7, 2023, KLJ dug a 3x3x3 hole with a large electric jackhammer and generator at the midpoint and online between section corners north and south and probed and found nothing. KLJ established the West $\frac{1}{4}$ corner location at the straight line single proportion between section corners north and south.

On July, 19, 2023, KLJ set a $\frac{5}{8}$ " rebar with MN LS 48258 down 0.50' below grade which falls on the centerline of the roadway and extension of the remnant fence east.