

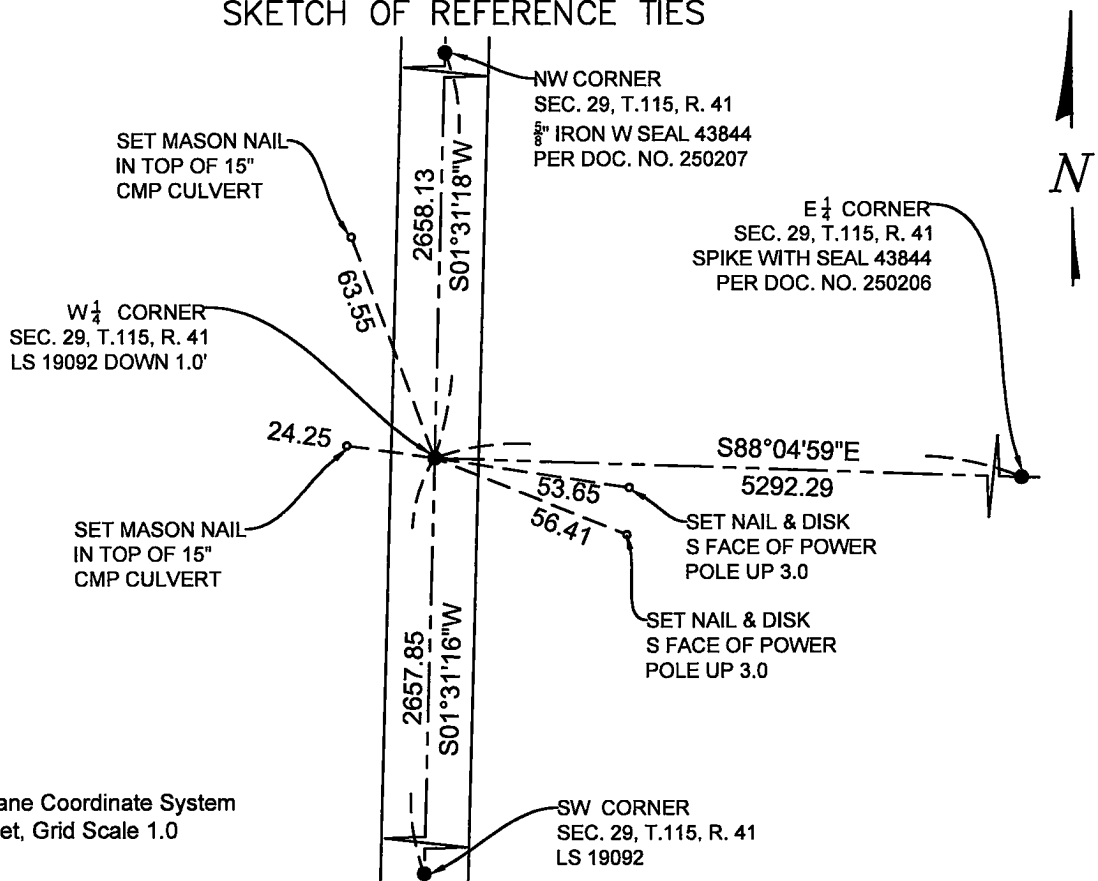
# CERTIFICATE OF LOCATION OF GOVERNMENT CORNER

WEST QUARTER Corner of Section 29, Township 115 N., Range 41 W., 5th P.M.  
STATE OF MINNESOTA, County of YELLOW MEDICINE.

At the corner location shown on the sketch:

- On 6-7-2023 found a YELLOW CAP MARKED WITH LS 19092  
date  
DOWN 1.00' BELOW GRADE ON THE CL OF TOWNSHIP ROAD  
 left monument as found,     lowered monument,     removed monument (explain)
- On \_\_\_\_\_ placed a \_\_\_\_\_  
date

## SKETCH OF REFERENCE TIES



Minnesota State Plane Coordinate System  
 South Zone, US Feet, Grid Scale 1.0  
 NAD83 (2011)  
 N = 967598.70  
 E = 2149420.83

NOT TO SCALE

Statement of evidence relative to this corner location is on back of this page.

I hereby certify that this document and the data contained herein was prepared by me or under my direct supervision.

*Janel Timm*  
 \_\_\_\_\_  
 SIGNATURE

9-5-2023  
 \_\_\_\_\_  
 DATE

Registration No. 48258

- Land Surveyor                       Professional Engineer  
 County Surveyor                     County Engineer

**Doc# 280877 Fee: \$0.00 2 Pages**

Property & Public Services  
 Property Records Division  
 Yellow Medicine County, Minnesota  
 I hereby certify that the within instrument was filed on September 11, 2023 at 12:35 PM

Janel Timm, Yellow Medicine County Recorder

By Marit Nordang Deputy

# STATEMENT OF EVIDENCE

W $\frac{1}{4}$  29-115-41

KLJ contacted the following for survey information

MN GLO/BLM original survey records  
Yellow Medicine County Recorder's Office  
MNDOT office in Willmar  
Yellow Medicine County Highway Engineer's Office  
Bonnema Surveys, Inc. of Willmar  
O'Malley & Kron Land Surveyors, Inc. of Willmar  
Bueltel-Moseng Land Surveying of Marshall  
Marihart Surveying, P.A. of Dawson  
Egan Field & Nowak, Inc of New Brighton  
E.G. Rud & Sons, Inc. of Hutchinson

In September, 1858, C.E. DAVIS & J.W. WEBB JR., General Land Office Deputy Surveyors performing the original survey of the subdivision lines set a wood post, in mound with pits.

In April, 2007, Roy Marihart MN LS 19092 filed a Certificate of Survey at the Yellow Medicine County Recorders Office in the SE  $\frac{1}{4}$  of said Section 29. These are stored in a file as courtesy copies, and are not recorded. They are available for viewing and copies can be made upon request. The Certificate of Survey does not show this corner however it indicates a full section breakdown mathematically and the position of the monument is intended to be straight line single proportion.

In August, 2009, Dan Bueltel, MN LS 43844 filed a Certificate of Survey at the Yellow Medicine County Recorders Office in the E  $\frac{1}{2}$  of said Section 29. These are stored in a file as courtesy copies, and are not recorded. They are available for viewing and copies can be made upon request. The Certificate of Survey shows that Dan found and used this corner, but has no distance to it. Extending the line from the east passes through the monument.

On June 7, 2023, KLJ dug and found a  $\frac{1}{2}$ " rebar capped iron monument set by Roy Marihart, MN LS 19092, and accepted the monument as the West  $\frac{1}{4}$  corner. This falls on centerline of the township road.

On June 20, 2023, KLJ contacted Roy Marihart, MN LS 19092 and he stated that he is retired and he is not going to file corner certificates on any of his Section corner monuments.