

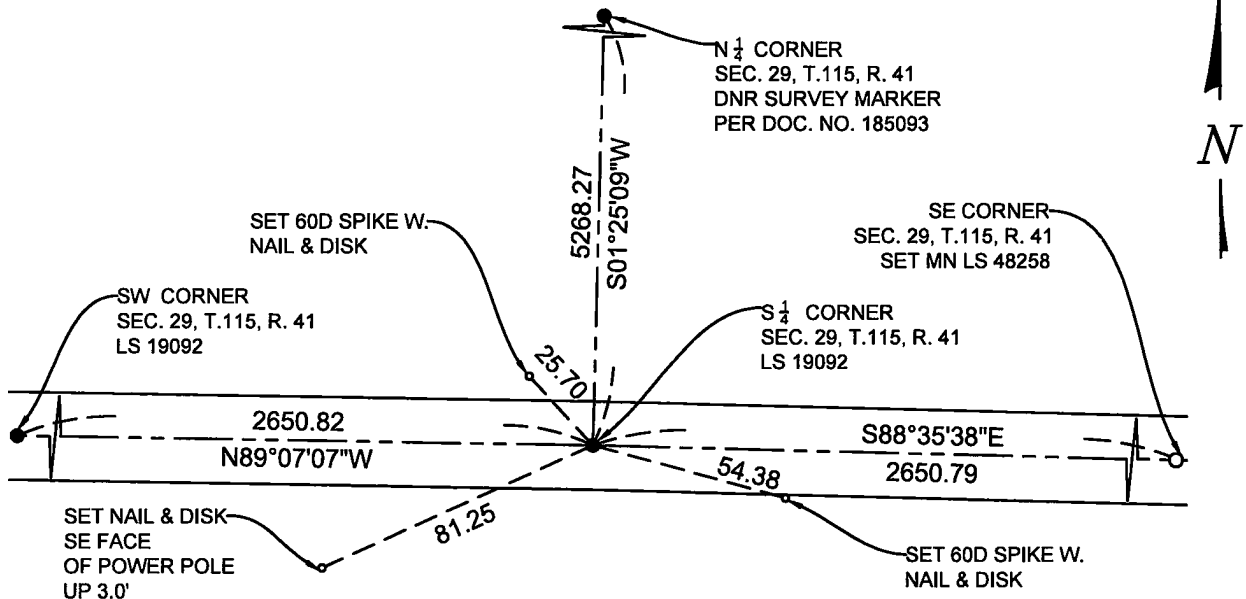
CERTIFICATE OF LOCATION OF GOVERNMENT CORNER

SOUTH QUARTER Corner of Section 29, Township 115 N., Range 41 W., 5th P.M.
STATE OF MINNESOTA, County of YELLOW MEDICINE.

At the corner location shown on the sketch:

- On 6-7-2023 found a YELLOW CAP MARKED WITH LS 19092
date
DOWN 1.00' BELOW GRADE ON THE CL OF TOWNSHIP ROAD
- left monument as found, lowered monument, removed monument (explain)
- On _____ placed a _____
date

SKETCH OF REFERENCE TIES



Minnesota State Plane Coordinate System
 South Zone, US Feet, Grid Scale 1.0
 NAD83 (2011)
 N = 964901.01
 E = 2152000.78

NOT TO SCALE

Statement of evidence relative to this corner location is on back of this page.

I hereby certify that this document and the data contained herein was prepared by me or under my direct supervision.

[Signature]
 SIGNATURE
9-5-2023
 DATE

Registration No. 48258

- Land Surveyor Professional Engineer
- County Surveyor County Engineer

Doc# 280878 Fee: \$0.00 2 Pages

Property & Public Services
 Property Records Division
 Yellow Medicine County, Minnesota
 I hereby certify that the within instrument was filed on September 11, 2023 at 12:40 PM

Janel Timm, Yellow Medicine County Recorder

By Marit Nordang Deputy

STATEMENT OF EVIDENCE

S $\frac{1}{4}$ 29-115-41

KLJ contacted the following for survey information

MN GLO/BLM original survey records
Yellow Medicine County Recorder's Office
MNDOT office in Willmar
Yellow Medicine County Highway Engineer's Office
Bonnema Surveys, Inc. of Willmar
O'Malley & Kron Land Surveyors, Inc. of Willmar
Bueltel-Moseng Land Surveying of Marshall
Marihart Surveying, P.A. of Dawson
Egan Field & Nowak, Inc of New Brighton
E.G. Rud & Sons, Inc. of Hutchinson

In September, 1858, C.E. DAVIS & J.W. WEBB JR., General Land Office Deputy Surveyors performing the original survey of the subdivision lines set a wood post, in mound with pits.

In April, 2007, Roy Marihart MN LS 19092 filed a Certificate of Survey at the Yellow Medicine County Recorders Office in the SE $\frac{1}{4}$ of said Section 29. These are stored in a file as courtesy copies, and are not recorded. They are available for viewing and copies can be made upon request. The Certificate of Survey shows that Roy found this corner and the distance 2651.18' West & 2651.18 East likely in Yellow Medicine County ground distances. with a bearing break.

In August, 2009, Dan Bueltel, MN LS 43844 filed a Certificate of Survey at the Yellow Medicine County Recorders Office in the E $\frac{1}{2}$ of said Section 29. These are stored in a file as courtesy copies, and are not recorded. They are available for viewing and copies can be made upon request. The Certificate of Survey shows that Dan found and used this corner, but has no distance to it. Extending the line from the East & North pass through the monument

In December, 2013, Roy Marihart MN LS 19092 filed a Certificate of Survey at the Yellow Medicine County Recorders Office in the NW $\frac{1}{4}$ of Section 32 said Township. These are stored in a file as courtesy copies, and are not recorded. They are available for viewing and copies can be made upon request. The Certificate of Survey shows that Roy found this corner and the distance 2651.18' West & 2651.18 East likely in Yellow Medicine County ground distances with a bearing break.

On June 7, 2023, KLJ dug and found a $\frac{1}{2}$ " rebar capped iron monument set by Roy Marihart, MN LS 19092, and accepted the monument as the Southwest corner This falls on centerline of the township road. The monument had a faint draw and was found by retracing the irons in the Certificate of Survey.

On June 20, 2023, KLJ contacted Roy Marihart, MN LS 19092 and he stated that he is retired and he is not going to file corner certificates on any of his Section corner monuments.