

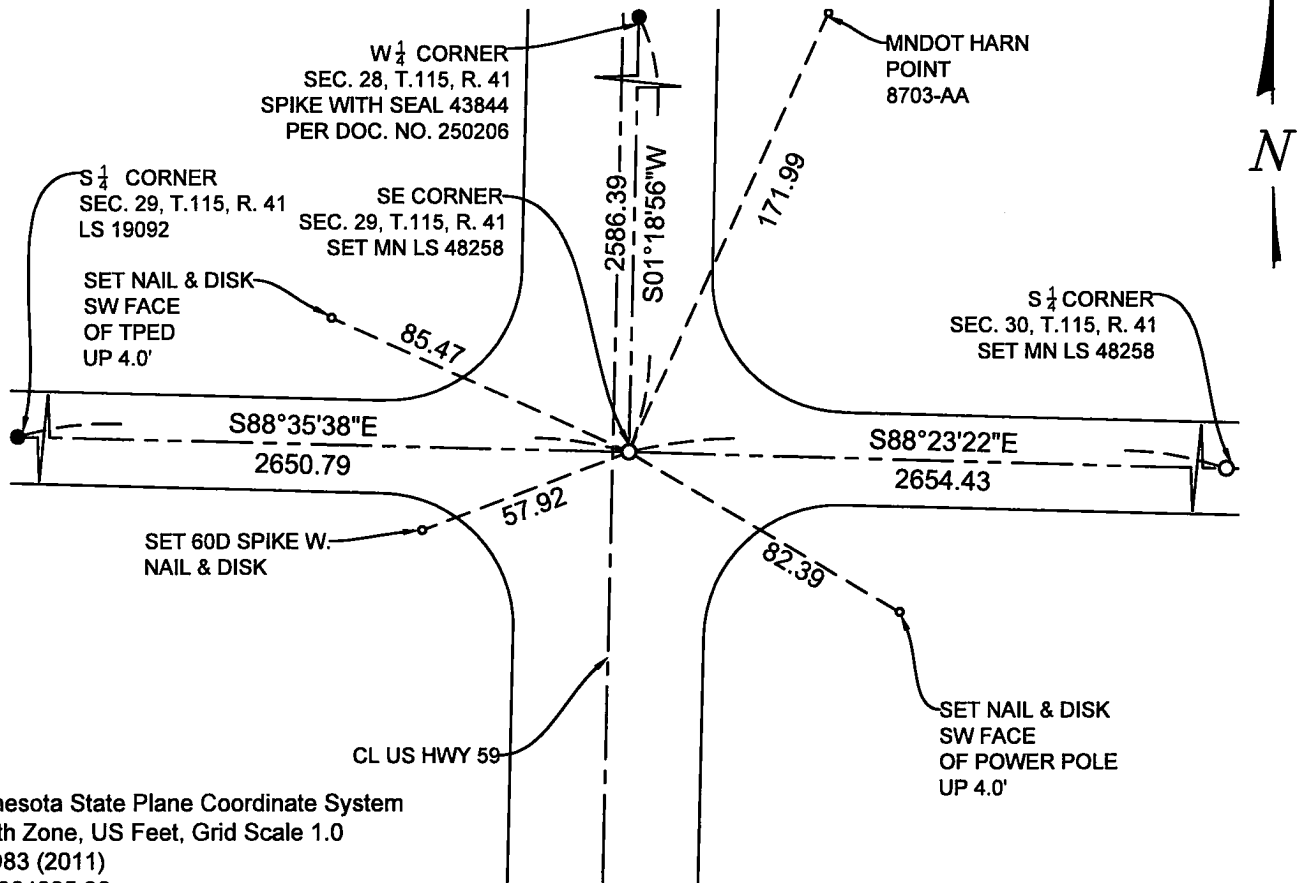
CERTIFICATE OF LOCATION OF GOVERNMENT CORNER

SOUTHEAST Corner of Section 29, Township 115 N., Range 41 W., 5th P.M.
STATE OF MINNESOTA, County of YELLOW MEDICINE.

At the corner location shown on the sketch:

- On 6-7-2023 found a PK NAIL FLUSH IN BITUMINOUS US HIGHWAY
date
NUMBER 59
- left monument as found, lowered monument, removed monument (explain)
- On 6-7-2023 placed a 5/8 INCH BY 18" LONG REBAR WITH CAP MARKED
date
MN LS 48258 LOCATED 4.0' EAST OF THE CENTERLINE OF US HWY 59.

SKETCH OF REFERENCE TIES



Minnesota State Plane Coordinate System
South Zone, US Feet, Grid Scale 1.0
NAD83 (2011)
N = 964835.96
E = 2154650.77

NOT TO SCALE

Statement of evidence relative to this corner location is on back of this page.

I hereby certify that this document and the data contained herein was prepared by me or under my direct supervision.

Janel Timm
SIGNATURE
Registration No. 48258

9-5-2023
DATE

- Land Surveyor Professional Engineer
- County Surveyor County Engineer

Doc# 280879 Fee: \$0.00 2 Pages

Property & Public Services
Property Records Division
Yellow Medicine County, Minnesota
I hereby certify that the within instrument was filed on September 11, 2023 at 12:45 PM

Janel Timm, Yellow Medicine County Recorder

By *Marit Nordang* Deputy

STATEMENT OF EVIDENCE

SE 29-115-41

KLJ contacted the following for survey information

MN GLO/BLM original survey records
Yellow Medicine County Recorder's Office
MNDOT office in Willmar
Yellow Medicine County Highway Engineer's Office
Bonnema Surveys, Inc. of Willmar
O'Malley & Kron Land Surveyors, Inc. of Willmar
Bueltel-Moseng Land Surveying of Marshall
Marihart Surveying, P.A. of Dawson
Egan Field & Nowak, Inc of New Brighton
E.G. Rud & Sons, Inc. of Hutchinson

In September, 1858, C.E. DAVIS & J.W. WEBB JR., General Land Office Deputy Surveyors performing the original survey of the subdivision lines set a wood post, in mound with pits.

Date Not Shown, County Surveyor name no shown "Red Book", page 453, on file at the Yellow Medicine County Recorder's notes Tel. Pol. SW 30' & fence post se 37' both are gone. There is no indication of a monument found or set. All ties are gone.

Date Not Shown, County Highway Engineer's Office shows ties of 36.0 T.P. SW & 34.9 COR FP. NW. There is no indication of a monument found or set. All ties are gone.

Date not shown, MNDOT RW map 13-42, indicates that the corner is 4.0' right (stationing runs south to north) of the P.O.T. station 371+13.8. No indication of the monument type is shown.

In April, 2007, Roy Marihart MN LS 19092 filed a Certificate of Survey at the Yellow Medicine County Recorders Office in the SE $\frac{1}{4}$ of said Section 29. These are stored in a file as courtesy copies, and are not recorded. They are available for viewing and copies can be made upon request. The Certificate of Survey shows that Roy found this corner and the distance 2651.18' West likely in Yellow Medicine County ground distances. with a bearing break.

In August, 2009, Dan Bueltel, MN LS 43844 filed a Certificate of Survey at the Yellow Medicine County Recorders Office in the E $\frac{1}{2}$ of said Section 29. These are stored in a file as courtesy copies, and are not recorded. They are available for viewing and copies can be made upon request. The Certificate of Survey shows that Dan found and used this corner and shows a distance of 2651.20' West by doubling the distance from the 1/16th corner and 2586.82' North which matches the MNDOT RW map 13-42 distances by stationing well.

In December, 2013, Roy Marihart MN LS 19092 filed a Certificate of Survey at the Yellow Medicine County Recorders Office in the NW $\frac{1}{4}$ of Section 32 said Township. These are stored in a file as courtesy copies, and are not recorded. They are available for viewing and copies can be made upon request. The Certificate of Survey shows that Roy found this corner and the distance 2651.18' West likely in Yellow Medicine County ground distances with a bearing break.

On June 7, 2023, KLJ dug and found a PK nail flush in the bituminous and accepted the monument as the Southeast corner This falls 4.00' east of the centerline of US highway number 59. The PK nail was lifted and no other draws were present. The PK nail was removed and a $\frac{5}{8}$ " x 18" rebar with MN LS 48258 was set 0.30 below grade.

On June 20, 2023, KLJ contacted Roy Marihart, MN LS 19092 and he stated that he is retired and he is not going to file corner certificates on any of his Section corner monuments.