

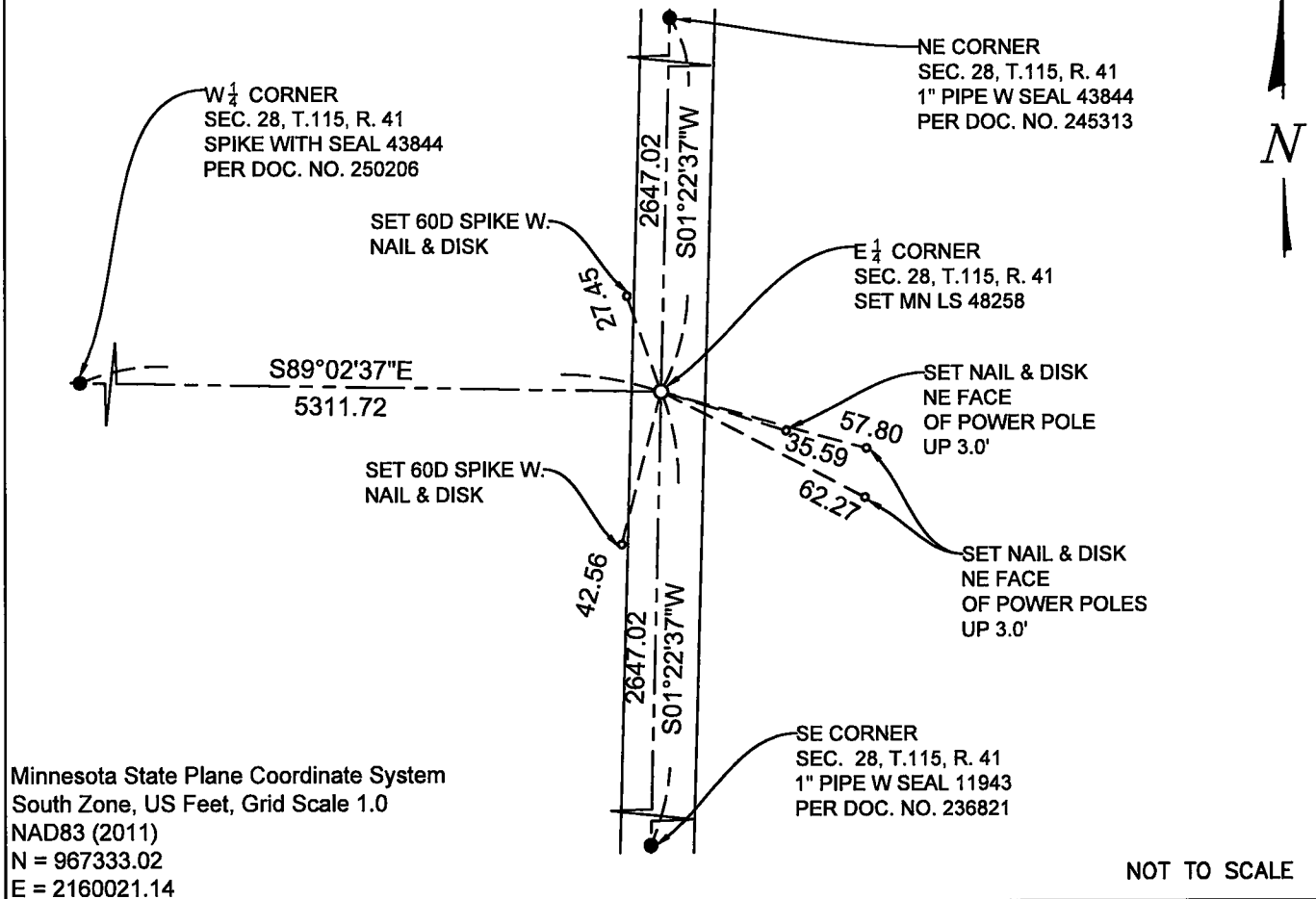
CERTIFICATE OF LOCATION OF GOVERNMENT CORNER

EAST QUARTER Corner of Section 28, Township 115 N., Range 41 W., 5th P.M.
STATE OF MINNESOTA, County of YELLOW MEDICINE.

At the corner location shown on the sketch:

- On _____ found a _____
date _____
- left monument as found, lowered monument, removed monument (explain)
- On 7-19-2023 placed a 5/8 INCH BY 18" LONG REBAR WITH CAP MARKED
date _____
MN LS 48258 AT THE LOCATION SHOWN BELOW.

SKETCH OF REFERENCE TIES



Statement of evidence relative to this corner location is on back of this page.

I hereby certify that this document and the data contained herein was prepared by me or under my direct supervision.

Janel Timm
SIGNATURE 9-5-2023
DATE

Registration No. 48258

- Land Surveyor Professional Engineer
 County Surveyor County Engineer

Doc# 280881 Fee: \$0.00 2 Pages

Property & Public Services
Property Records Division
Yellow Medicine County, Minnesota
I hereby certify that the within instrument was filed on September 11, 2023 at 12:55 PM

Janel Timm, Yellow Medicine County Recorder

By *Marit Nordang* Deputy

STATEMENT OF EVIDENCE

E¹ 28-115-41

KLJ contacted the following for survey information

MN GLO/BLM original survey records
Yellow Medicine County Recorder's Office
MNDOT office in Willmar
Yellow Medicine County Highway Engineer's Office
Bonnema Surveys, Inc. of Willmar
O'Malley & Kron Land Surveyors, Inc. of Willmar
Bueltel-Moseng Land Surveying of Marshall
Marihart Surveying, P.A. of Dawson
Egan Field & Nowak, Inc of New Brighton
E.G. Rud & Sons, Inc. of Hutchinson

In September, 1858, C.E. DAVIS & J.W. WEBB JR., General Land Office Deputy Surveyors performing the original survey of the subdivision lines set a wood post, in mound with pits.

In April, 1918 County Surveyor John Norgaard's "Red Book", page 401, on file at the Yellow Medicine County Recorder's Office shows distances of 2646.5 feet North and 2646.5 feet South to each Section corner. The notes state that he set a stone on line and equal distances between section corners.

On July, 19, 2023, KLJ dug a 3x3x3 hole with a large electric jackhammer and generator at the midpoint and online between section corners north and south and probed and found nothing. Another 3x3x3 hole was dug at the center of the road and field division east 10' south of said midpoint and probed and found nothing. KLJ found no evidence of the original corner or other corner monuments. KLJ established the location at the straight line single proportion which falls on the centerline of the township road and 10' north of the field division east. Monument set 0.50' below grade.