

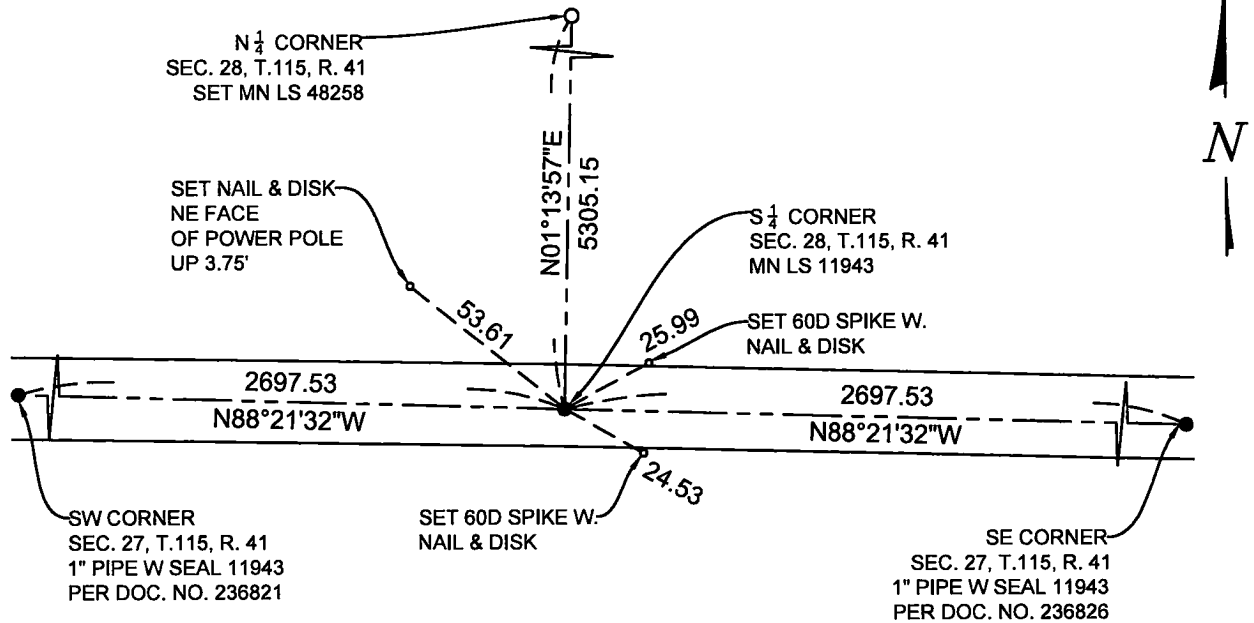
CERTIFICATE OF LOCATION OF GOVERNMENT CORNER

SOUTH QUARTER Corner of Section 27, Township 115 N., Range 41 W., 5th P.M.
STATE OF MINNESOTA, County of YELLOW MEDICINE.

At the corner location shown on the sketch:

- On 7-19-2023 found a A 1" PIPE MARKED WITH LS 11943
date
DOWN 0.30' BELOW GRADE ON THE CL OF TOWNSHIP ROAD
 left monument as found, lowered monument, removed monument (explain)
- On _____ placed a _____
date

SKETCH OF REFERENCE TIES



Minnesota State Plane Coordinate System
 South Zone, US Feet, Grid Scale 1.0
 NAD83 (2011)
 N = 964609.51
 E = 2162653.97

NOT TO SCALE

Statement of evidence relative to this corner location is on back of this page.

I hereby certify that this document and the data contained herein was prepared by me or under my direct supervision.

Janel Timm
 SIGNATURE

9-5-2023
 DATE

Registration No. 48258

- Land Surveyor Professional Engineer
 County Surveyor County Engineer

Doc# 280883 Fee: \$0.00 2 Pages

Property & Public Services
 Property Records Division
 Yellow Medicine County, Minnesota
 I hereby certify that the within instrument was filed on September 11, 2023 at 1:05 PM

Janel Timm, Yellow Medicine County Recorder

By Marit Nordang Deputy

STATEMENT OF EVIDENCE

S $\frac{1}{4}$ 27-115-41

KLJ contacted the following for survey information

MN GLO/BLM original survey records
Yellow Medicine County Recorder's Office
MNDOT office in Willmar
Yellow Medicine County Highway Engineer's Office
Bonnema Surveys, Inc. of Willmar
O'Malley & Kron Land Surveyors, Inc. of Willmar
Bueltel-Moseng Land Surveying of Marshall
Marihart Surveying, P.A. of Dawson
Egan Field & Nowak, Inc of New Brighton
E.G. Rud & Sons, Inc. of Hutchinson

In September, 1858, C.E. DAVIS & J.W. WEBB JR., General Land Office Deputy Surveyors performing the original survey of the subdivision lines set a wood post, in mound with pits.

In April, 1918 County Surveyor John Norgaard's "Red Book", page 401, on file at the Yellow Medicine County Recorder's Office shows distances of 2697.5 feet East and 2697.5 feet West to each Section corner. The notes state that he set a stone on line and equal distances between section corners.

In November, 2003 Lyle Moseng filed a Certificate of Survey at the Yellow Medicine County Recorders Office in the SW $\frac{1}{4}$ of Section 34 said Township. These are stored in a file as courtesy copies, and are not recorded. They are available for viewing and copies can be made upon request. The Certificate of Survey shows that Lyle set a 1" pipe with seal #11943 for this corner and shows the distance 2697.56' West & 2697.56 East. The basis of bearing/coordinate system is not listed. The corner position is a straight line single proportion.

On July, 19, 2023, KLJ found a 1" pipe with seal #11943. KLJ found no evidence of the original corner or other corner monuments. KLJ accepted the corner position which falls on the centerline of the township road and field division north and south. Monument was 0.30' below grade.