

CERTIFICATE OF LOCATION OF GOVERNMENT CORNER

NORTH QUARTER Corner of Section 27, Township 115 N., Range 40 W., 5th P.M.
STATE OF MINNESOTA, County of YELLOW MEDICINE.

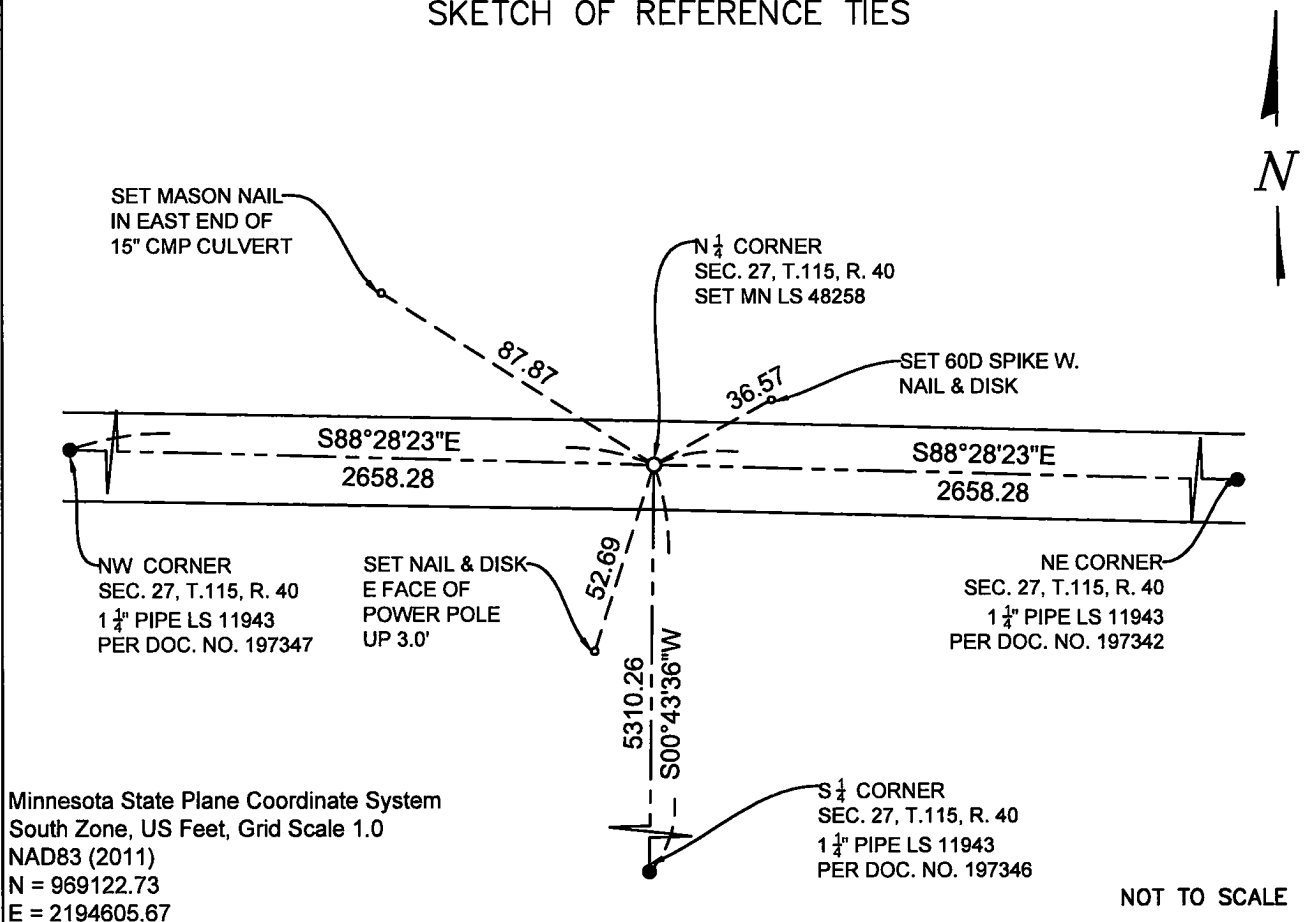
At the corner location shown on the sketch:

On 6-21-2023 found a 1/2" PK NAIL FLUSH IN THE BITUMINOUS HIGHWAY
date

left monument as found, lowered monument, removed monument (explain)

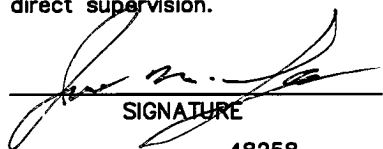
On 7-19-2023 placed a 5/8 INCH BY 18" LONG REBAR WITH CAP MARKED
date
MN LS 48258 AT THE LOCATION SHOWN BELOW.

SKETCH OF REFERENCE TIES



Statement of evidence relative to this corner location is on back of this page.

I hereby certify that this document and the data contained herein was prepared by me or under my direct supervision.


SIGNATURE

7-5-2023
DATE

Registration No. 48258

- Land Surveyor Professional Engineer
 County Surveyor County Engineer

Doc# 280884 Fee: \$0.00 2 Pages

Property & Public Services
Property Records Division
Yellow Medicine County, Minnesota
I hereby certify that the within instrument was filed on September 11, 2023 at 1:10 PM

Janel Timm, Yellow Medicine County Recorder

By Marit Nordang Deputy

STATEMENT OF EVIDENCE

N $\frac{1}{4}$ 27-115-40

KLJ contacted the following for survey information

MN GLO/BLM original survey records
Yellow Medicine County Recorder's Office
MNDOT office in Willmar
Yellow Medicine County Highway Engineer's Office
Bonnema Surveys, Inc. of Willmar
O'Malley & Kron Land Surveyors, Inc. of Willmar
Bueltel-Moseng Land Surveying of Marshall
Marihart Surveying, P.A. of Dawson
Egan Field & Nowak, Inc of New Brighton
E.G. Rud & Sons, Inc. of Hutchinson

In September, 1864, C.E. DAVIS & J.W. WEBB JR., General Land Office Deputy Surveyors performing the original survey of the subdivision lines set a wood post, in mound with pits.

In April, 2015, Kurt D. Nelson, MN LS 45356, with E.G. Rud & Sons, INC. filed a Certificate of Survey at the Yellow Medicine County Recorders Office in the E $\frac{1}{2}$ of Section 27 said Township. These are stored in a file as courtesy copies, and are not recorded. They are available for viewing and copies can be made upon request. The Certificate of Survey shows that Kurt found a pk nail for this corner and shows the distance 2658.60' East & 5310.94 South. The basis of bearing/coordinate system is not listed and is assumed.

On June 21, 2023, KLJ found a $\frac{1}{2}$ " pk nail flush in the bituminous highway. It was lifted and no other magnetic draws were found. The pk nail was reset in the same location.

on July, 19, 2023, KLJ removed the pk nail and set a $\frac{5}{8}$ " x 18" rebar w MN LS 48258 down 0.30' which falls at the straight line single proportion on the centerline of the bituminous highway. The monument is 15' west of the field division North.