

# CERTIFICATE OF LOCATION OF GOVERNMENT CORNER

SOUTHWEST Corner of Section 28, Township 115N, Range 44W, 5th, P.M.

STATE OF MINNESOTA, County of YELLOW MEDICINE

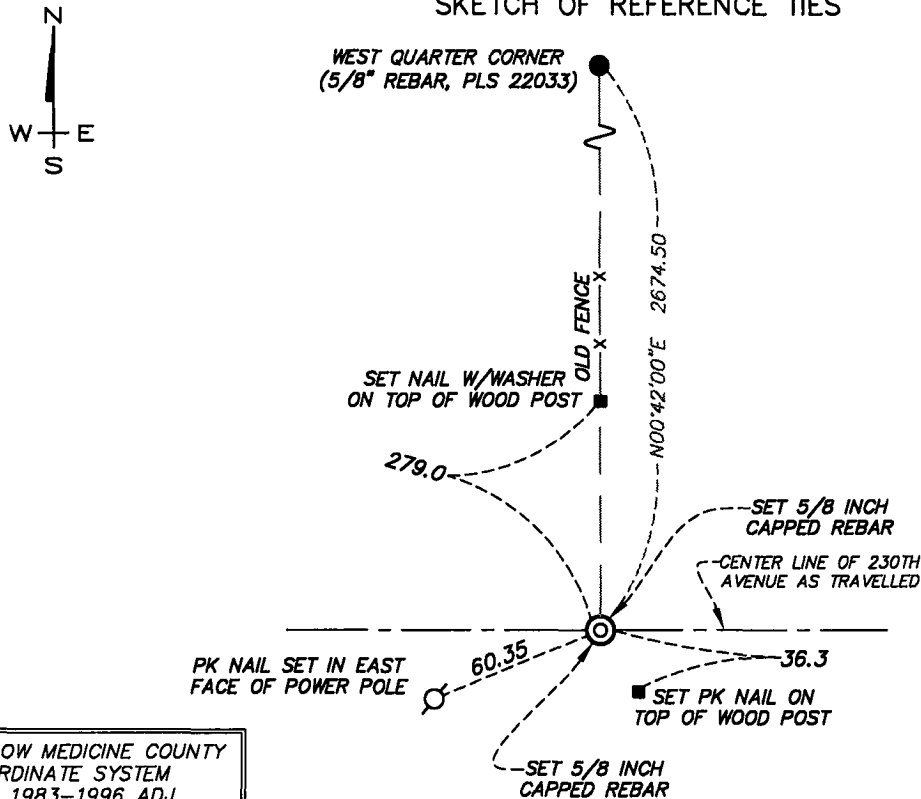
At the corner location shown on the sketch:

On \_\_\_\_\_ found a \_\_\_\_\_  
DATE

left monument as found,  lowered monument,  removed monument (explain)

On 8-30-12 placed a 5/8 INCH BY 18 INCH LONG IRON REBAR WITH CAP MARKED  
DATE  
BY LICENSE NO. 22033 AT THE LOCATION SHOWN.

## SKETCH OF REFERENCE TIES



YELLOW MEDICINE COUNTY  
COORDINATE SYSTEM  
NAD 1983-1996 ADJ.  
N = 169667.0522  
E = 428467.5859

Statement of evidence relative to this corner location is on the back of page.

I hereby certify that this document and the data contained herein was prepared by me or under my direct supervision.

*[Handwritten Signature]*  
SIGNATURE

07/05/2023  
DATE

Registration No. 22033

Land Surveyor,  Professional Engineer,  
 County Surveyor,  County Engineer

Doc# 280910 Fee: \$0.00 2 Pages

Property & Public Services  
Property Records Division  
Yellow Medicine County, Minnesota  
I hereby certify that the within instrument was filed on September 15, 2023 at 9:30 AM

Jane! Timm, Yellow Medicine County Recorder

By Marit Nordang Deputy

## Statement of Evidence

September, 1871, Lewis Harrington, General Land Office Deputy Surveyor performing the original survey of the subdivision lines set a wood post in a raised mound.

Surveyor's "Red Book", page 479, on file at the Yellow Medicine County Recorder's Office, shows a distance tie to the West Quarter corner of Section 33 to the south (1906).

On August 30, 2012 Egan Field & Nowak, Inc. found no evidence of the original corner and established the location at the intersection of a fence line running north of the corner position, as extended southerly, with the center line of 230th Avenue.

NAD 83-1996 (OPUS derived) adjusted geodetic coordinates:

Latitude: 44°43'56.676" North

Longitude: 96°10'30.832" West