

CERTIFICATE OF LOCATION OF GOVERNMENT CORNER

WEST QUARTER Corner of Section 28, Township 115N, Range 44W, 5th, P.M.

STATE OF MINNESOTA, County of YELLOW MEDICINE

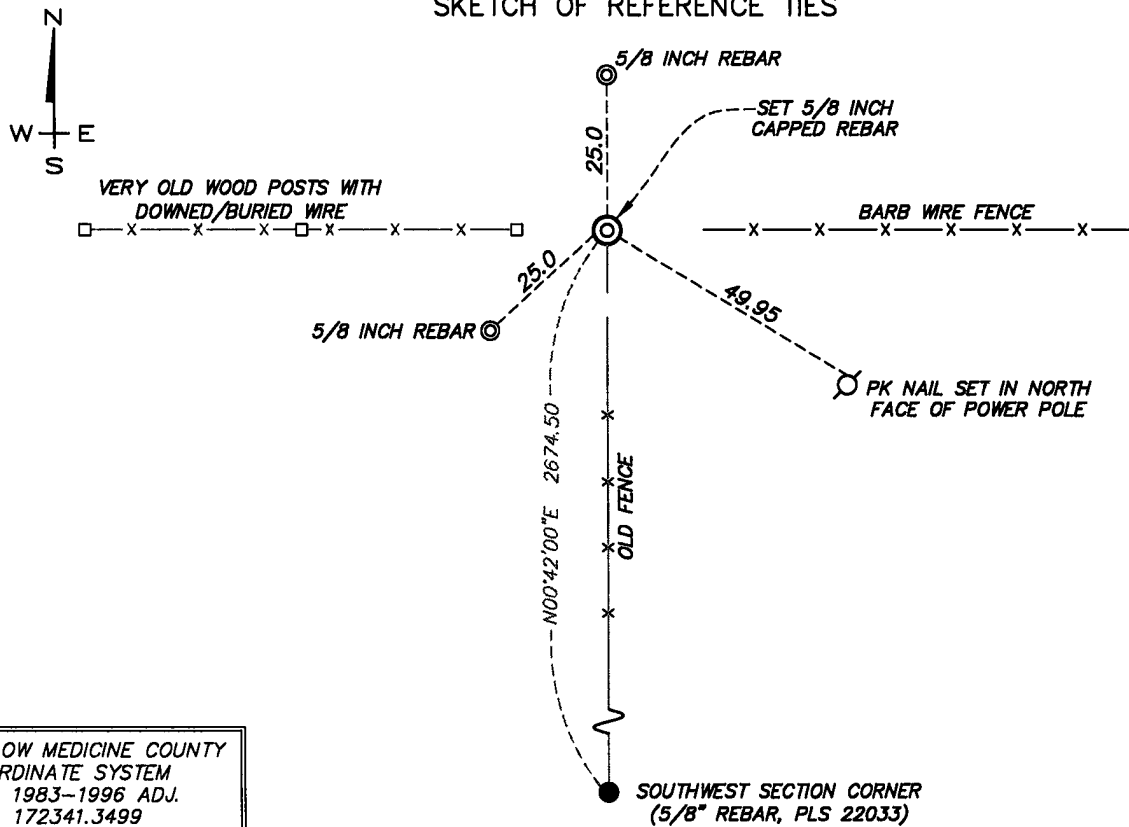
At the corner location shown on the sketch:

On _____ found a _____
DATE

left monument as found, lowered monument, removed monument (explain)

On 5-2-12 placed a 5/8 INCH BY 18 INCH LONG IRON REBAR WITH CAP MARKED
DATE
BY LICENSE NO. 22033 AT THE LOCATION SHOWN.

SKETCH OF REFERENCE TIES



YELLOW MEDICINE COUNTY
COORDINATE SYSTEM
NAD 1983-1996 ADJ.
N = 172341.3499
E = 428500.2664

Statement of evidence relative to this corner location is on the back of page.

I hereby certify that this document and the data contained herein was prepared by me or under my direct supervision.

[Handwritten Signature]

07/05/2023
DATE

Registration No. 22033

Land Surveyor, Professional Engineer,
 County Surveyor, County Engineer

Doc# 280911 Fee: \$0.00 2 Pages
Property & Public Services
Property Records Division
Yellow Medicine County, Minnesota
I hereby certify that the within instrument was filed on September 15, 2023 at 9:35 AM

Janel Timm, Yellow Medicine County Recorder

By Marit Nordang Deputy

Statement of Evidence

In September, 1871, Lewis Harrington, General Land Office Deputy Surveyor performing the original survey of the subdivision lines set a wood post in a raised mound and placed a witness corner north 50 links.

On April 20, 2012 Egan Field & Nowak, Inc. dug and probed at fence line intersection and found no evidence of the original corner or other corner monuments. EFN established the location at the intersection of an old fence line west and a fence line south of the corner position.

NAD 83–1996 (OPUS derived) adjusted geodetic coordinates:

Latitude: 44°44'23.082" North

Longitude: 96°10'30.504" West