

# CERTIFICATE OF LOCATION OF GOVERNMENT CORNER

SOUTH QUARTER Corner of Section 27, Township 115N, Range 43W, 5th, P.M.

STATE OF MINNESOTA, County of YELLOW MEDICINE

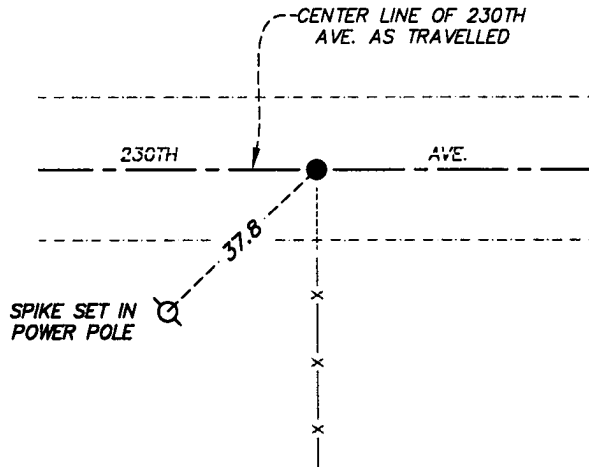
At the corner location shown on the sketch:

On \_\_\_\_\_ found a \_\_\_\_\_  
DATE

left monument as found,  lowered monument,  removed monument (explain)

On 3-22-12 placed a 5/8" x 18" REBAR WITH CAP MARKED BY LICENSE NO. 22033 AT  
DATE  
THE LOCATION SHOWN.

## SKETCH OF REFERENCE TIES



YELLOW MEDICINE COUNTY  
COORDINATE SYSTEM  
NAD 1983-1996 ADJ.  
N = 169392.530  
E = 468307.130

Statement of evidence relative to this corner location is on the back of page.

I hereby certify that this document and the data contained herein was prepared by me or under my direct supervision.

[Signature] 07/05/2023  
SIGNATURE DATE

Registration No. 22033

Land Surveyor,  Professional Engineer,  
 County Surveyor,  County Engineer

Doc# 280912 Fee: \$0.00 2 Pages

Property & Public Services  
Property Records Division  
Yellow Medicine County, Minnesota  
I hereby certify that the within instrument was filed on September 15, 2023 at 9:40 AM

Janel Timm, Yellow Medicine County Recorder

By Marit Nordang Deputy

## Statement of Evidence

In November, 1867, David Watson, General Land Office Deputy Surveyor set a wood post in a mound with pits.

Surveyor's "Red Book", page 537, on file at the Yellow Medicine County Recorder's Office, indicates a wood post at the South Quarter at fence lines north and south.

On March 22, 2012 Egan Field & Nowak, Inc. searched and found no evidence of corner monumentation. No road excavation was made because roadway lies in cut area. Set rebar at center line of road at fence extension from the south.

NAD 83-1996 (OPUS derived) adjusted geodetic coordinates:

Latitude: 44°43'54.93" North

Longitude: 96°01'18.49" West