

# CERTIFICATE OF LOCATION OF GOVERNMENT CORNER

EAST QUARTER Corner of Section 27, Township 115N, Range 43W, 5th, P.M.

STATE OF MINNESOTA, County of YELLOW MEDICINE

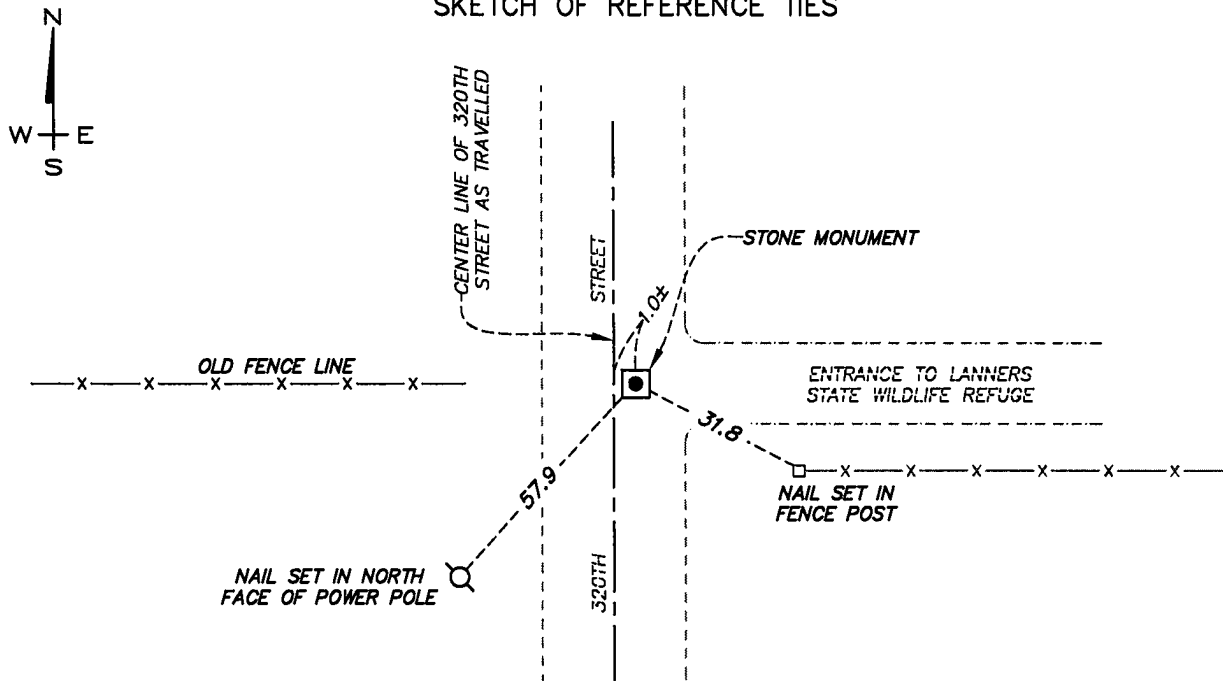
At the corner location shown on the sketch:

On 3-22-12 found a STONE MONUMENT WITH IRON BAR ALONG NORTH EDGE DOWN 26  
DATE  
INCHES IN ROAD ONE FOOT EAST OF CENTER LINE.

left monument as found,     lowered monument,     removed monument (explain)

On 3-22-12 placed a 5/8" x 18" REBAR WITH CAP MARKED BY LICENSE NO. 22033 AT  
DATE  
THE LOCATION SHOWN.

### SKETCH OF REFERENCE TIES



YELLOW MEDICINE COUNTY  
 COORDINATE SYSTEM  
 NAD 1983-1996 ADJ.  
 N = 171970.5670  
 E = 470973.8500

Statement of evidence relative to this corner location is on the back of page.

I hereby certify that this document and the data contained herein was prepared by me or under my direct supervision.

*[Handwritten Signature]*

07/05/2023  
DATE

Registration No. 22033

Land Surveyor,     Professional Engineer,  
 County Surveyor,     County Engineer

**Doc# 280913 Fee: \$0.00 2 Pages**

Property & Public Services  
 Property Records Division  
 Yellow Medicine County, Minnesota  
 I hereby certify that the within instrument was filed on September 15, 2023 at 9:45 AM

Janel Timm, Yellow Medicine County Recorder

By Marit Nordang Deputy

## Statement of Evidence

In November, 1867, David Watson, General Land Office Deputy Surveyor performing the original survey of the subdivision lines set a wood post in a mound with pits.

Surveyor's "Red Book", page 210, on file at the Yellow Medicine County Recorder's Office, indicates a wood post at the West Quarter of Section 26 from surveys in 1910 and 1929. The 1929 survey mentions a fence line West 29.8 feet.

On March 22, 2012 Egan Field & Nowak, Inc. found a stone monument located 26 inches below the surface with an iron bar placed along the north edge. Said Stone monument lies one foot east of the traveled township roadway center line and is on line with old fence to the west. Accepted stone as Quarter corner location.

NAD 83-1996 (OPUS derived) adjusted geodetic coordinates:

Latitude: 44°44'20.419" North

Longitude: 96°00'42.101" West