

Property & Public Services
Property Records Division
Yellow Medicine County, Minnesota
I hereby certify that the within instrument
was filed on October 18, 2023 at 10:05 AM

Janel Timm, Yellow Medicine County Recorder

By Marit Nordang Deputy

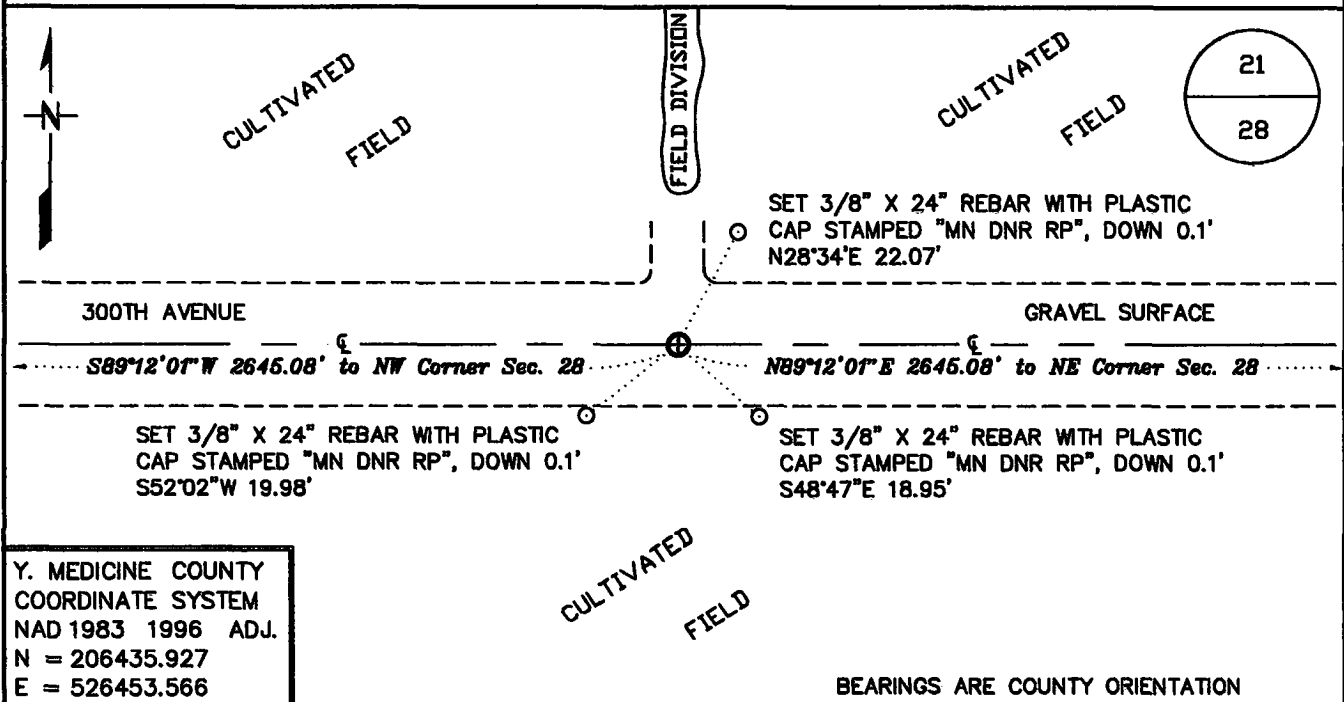
Index No. R-11

CERTIFICATE OF LOCATION OF GOVERNMENT CORNER

NORTH QUARTER Corner of Section 28, Township 116 N, Range 41 W
5TH Principal Meridian, State of Minnesota, County of YELLOW MEDICINE

At the corner location shown on the sketch:

- On 7/19/2023 found a 5/8" REBAR WITH PLASTIC CAP STAMPED "LS 19092"
DATE
DOWN 0.3' ON LINE AND MIDWAY BETWEEN SECTION CORNERS
- left monument as found, lowered monument, removed monument (explain)
- On _____ Placed a _____
DATE



Statement of evidence for this corner location is on back of this page. AUG 2023
WMA01728

I hereby certify that this plan, specification, or report was prepared by me or under my direct supervision and that I am a duly Licensed Land Surveyor under the laws of the State of Minnesota.

SIGNATURE Robert A. Langner DATE 10/10/2023 License Number 47461
ROBERT A. LANGNER

STATEMENT OF EVIDENCE

North Quarter Corner of Section 28, Township 116 North, Range 41 West, 5th P.M.

The following sources were contacted for information:

Roy Marihart, Marihart Surveying, P.A.
Dan Buetel, Buetel-Moseng Land Surveying
Yellow Medicine Recorders office
Yellow Medicine Highway Department
Minnesota History Center
U of M Historical Aerial Photo Online Library

In 1865, GLO surveyors Edward Davis & Watson Webb set post in mound with pits to mark the corner.

Page 404 of the large Book of Surveys, located in the office of the Yellow Medicine County Recorder, contains a survey by County Surveyor, John Norgaard, dated June 1918. Mr. Norgaard notes "Located on line and equal distance - Left flag pole"

A 1938 historic aerial photo obtained from the U of M Historical Aerial Photo Online Library depicts occupations lines east-west and north-south of the presumed corner location.

Roy Marihardt provided CAD files for work done in the area. A corner location was depicted but there was no indication of a monument at the corner.

In July 2023, the DNR Survey Crew navigated to area and searched along the centerline of a gravel road. A Marihardt monument was found down 0.3' at a proportionate position between the section corners.

The DNR Survey Crew returned in August along with a Wildlife backhoe operator and excavated a 28 foot east-west by 6 foot north-south hole to a depth of 3 feet and centered on a position about 12 feet west of the found Marihardt iron. Natural ground was found to be down approximately 8-10 inches. Nothing was additional was recovered.

After analysis of the records and field information, the Marihart monument was accepted as marking the lost position of the quarter corner.