

Doc# 281108 Fee: \$0.00 2 Pages
 Property & Public Services
 Property Records Division
 Yellow Medicine County, Minnesota
 I hereby certify that the within instrument
 was filed on October 18, 2023 at 10:10 AM

Janel Timm, Yellow Medicine County Recorder

By Marit Nordang Deputy

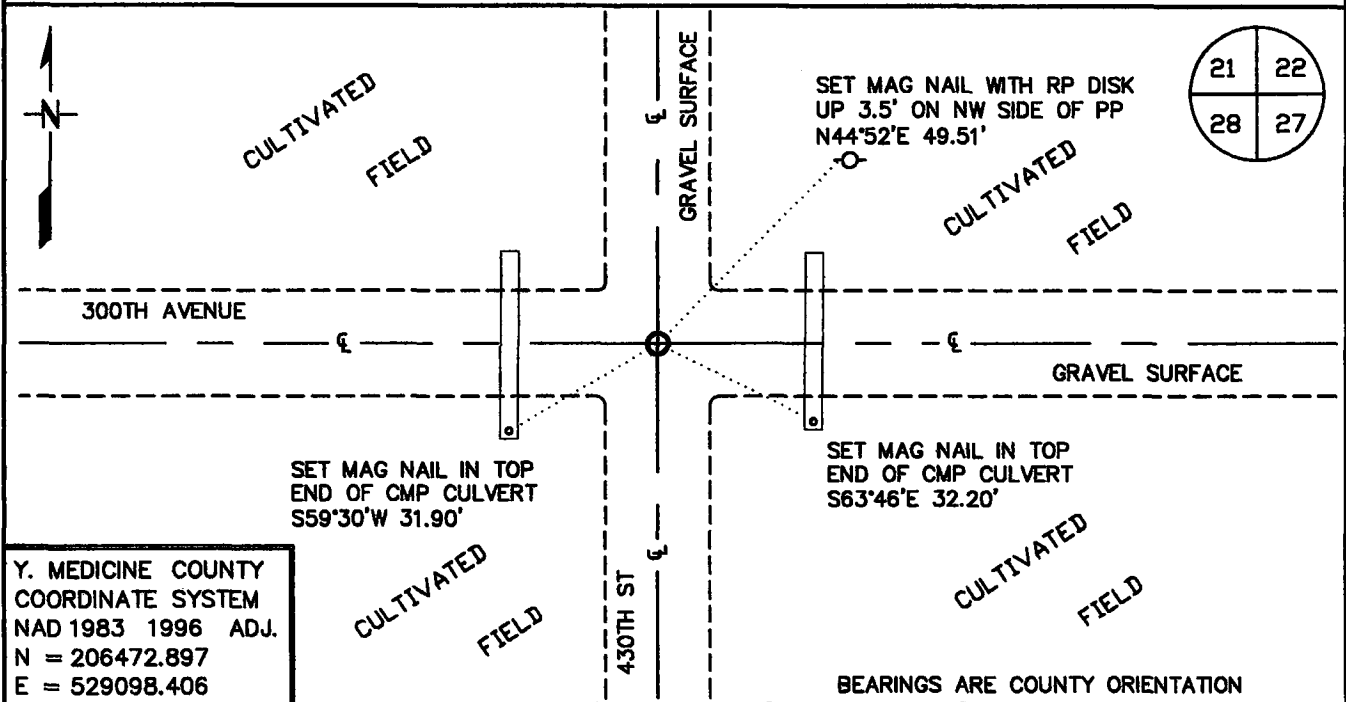
Index No. R-13

CERTIFICATE OF LOCATION OF GOVERNMENT CORNER

NORTHEAST Corner of Section 28, Township 116 N, Range 41 W
5TH Principal Meridian, State of Minnesota, County of YELLOW MEDICINE

At the corner location shown on the sketch:

- On 8/16/2023 found a 5/8" REBAR WITH PLASTIC CAP STAMPED "LS 19092"
DATE
DOWN 0.3' AND WOOD POST REMAINS
- left monument as found, lowered monument, removed monument (explain)
- On DATE Placed a



Y. MEDICINE COUNTY
 COORDINATE SYSTEM
 NAD 1983 1996 ADJ.
 N = 206472.897
 E = 529098.406

Statement of evidence for this corner location is on back of this page.

AUG 2023
 WMA01728

I hereby certify that this plan, specification, or report was prepared by me or under my direct supervision and that I am a duly Licensed Land Surveyor under the laws of the State of Minnesota.

SIGNATURE Robert A. Langner DATE 10/10/2023 License Number 47461
 ROBERT A. LANGNER

STATEMENT OF EVIDENCE

Northeast Corner of Section 28, Township 116 North, Range 41 West, 5th P.M.

The following Sources were contacted for information:

Roy Marihart, Marihart Surveying, P.A.
Dan Buetel, Buetel-Moseng Land Surveying
Yellow Medicine Recorders office
Yellow Medicine Highway Department
Minnesota History Center
U of M Historical Aerial Photo Online Library

In 1985, GLO surveyors Edward Davis and Watson Webb set post in mound with pits to mark the corner.

Page 68 of Book B of surveys in the Yellow Medicine County Recorder's office notes "Found stone and stake set in the Government Mound by adjoining landowners when the lands were plain. Set top of Monument level with ground"

Page 404 of the large Book of Surveys, located in the office of the Yellow Medicine County Recorder, contains a survey by county surveyor, John Norgaard, dated June 1918. Mr. Norgaard notes "Found Jasper monument in road."

A 1938 historic aerial photo obtained from the U of M Historical Aerial Photo Online Library depicts a north-south road and occupation lines east and west of the presumed corner location.

Roy Marihart provided CAD files for work done in the area. A corner location was depicted but there was no indication of a monument at the corner.

In July 2023, the DNR survey Crew searched the intersection of the gravel roads. A Marihart monument was found down 0.3 feet at the intersection of the gravel roads.

The DNR Survey Crew returned in August along with a Wildlife Backhoe operator and excavated an 8 foot by 8 foot area to 3 feet in dept. Found remains of a wood post under Marihart monument.

After analysis of the records and field information, the Marihardt monument was accepted as a perpetuation of the original government corner position.