

Doc# 281110 Fee: \$0.00 2 Pages

Property & Public Services  
Property Records Division  
Yellow Medicine County, Minnesota

I hereby certify that the within instrument  
was filed on October 18, 2023 at 10:20 AM

Jane Timm, Yellow Medicine County Recorder

By Marit Nordang Deputy

Index No. R-9

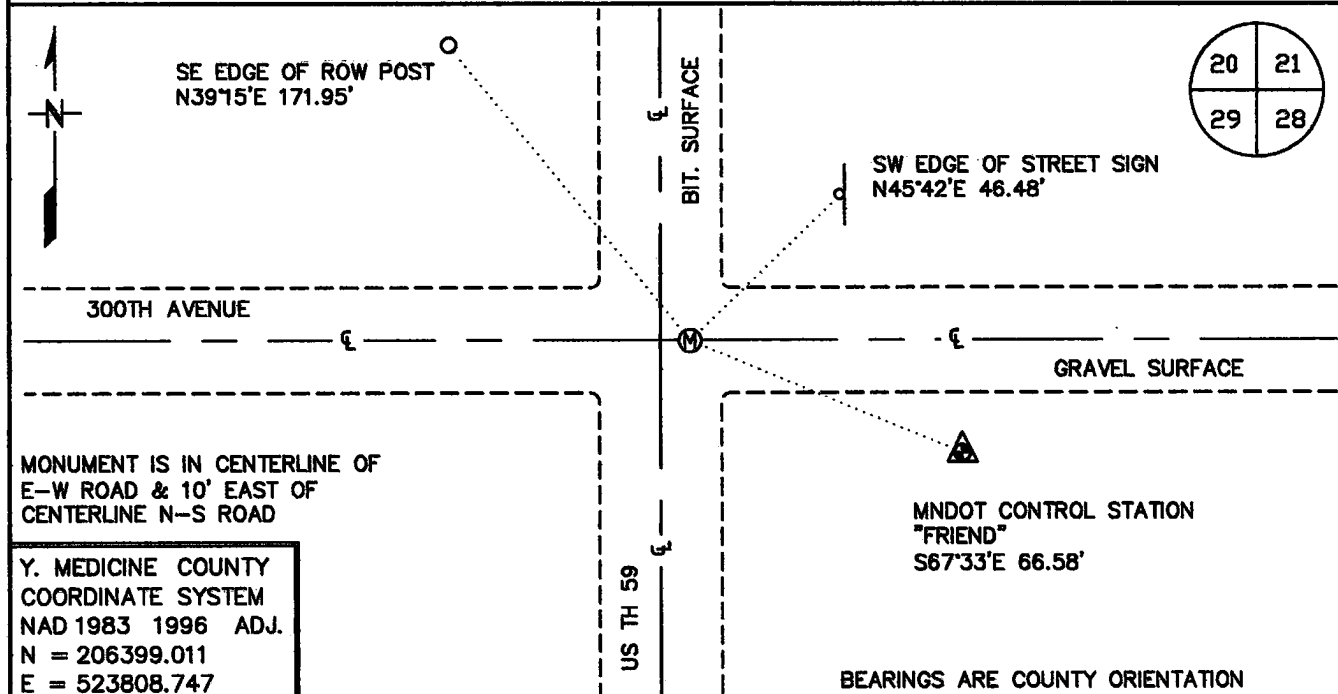
# CERTIFICATE OF LOCATION OF GOVERNMENT CORNER

NORTHEAST Corner of Section 29, Township 116 N, Range 41 W

5TH Principal Meridian, State of Minnesota, County of YELLOW MEDICINE

At the corner location shown on the sketch:

- On 7/19/2023 found a MAGNETIC ATTRACTION AT RECORD POSITION  
DATE
- left monument as found,  lowered monument,  removed monument (explain)
- On 7/20/2023 Placed a MAG NAIL AT RECORD POSITION OVER MAGNETIC  
DATE ATTRACTION



Y. MEDICINE COUNTY  
COORDINATE SYSTEM  
NAD 1983 1996 ADJ.  
N = 206399.011  
E = 523808.747

Statement of evidence for this corner location is on back of this page.

AUG 2023  
WMA01728

I hereby certify that this plan, specification, or report was prepared by me or under my direct supervision and that I am a duly Licensed Land Surveyor under the laws of the State of Minnesota.

SIGNATURE Robert A. Langner  
ROBERT A. LANGNER

DATE 10/10/2023

License Number 47461

## **STATEMENT OF EVIDENCE**

**Northeast Corner of Section 29, Township 116 North, Range 41 West, 5<sup>th</sup> P.M.**

The following Sources were contacted for information:

Roy Marihart, Marihart Surveying, P.A.  
Dan Buetel, Buetel-Moseng Land Surveying  
Yellow Medicine Recorders office  
Yellow Medicine Highway Department  
Minnesota History Center  
U of M Historical Aerial Photo Online Library  
MN Department of Transportation Right of Way Mapping and Monitoring Website

In 1985, GLO surveyors Edward Davis and Watson Webb set post in mound with pits to mark the corner.

Page 58 of Book B of surveys in the Yellow Medicine County Recorders office notes "Found stone and stake said by adjoining landowner to be set in the government mound. Set top of monument level with ground."

Page 404 of the large Book of Surveys, located in the office of the Yellow Medicine County Recorder, contains a survey by county surveyor, John Norgaard, dated June 1918. Mr. Norgaard notes "Found Jasper monument in road."

A 1938 historic aerial photo obtained from the U of M Historical Aerial Photo Online Library depicts road North, South, West and occupation East.

A 1948 Minnesota DOT Right of Way Map from the Minnesota Department of Transportation Right of Way Mapping and Monitoring website indicates the corner is at the intersection of township roads and 9.9' East of the Centerline of the Highway.

Roy Marihardt provided CAD files for work done in the area. A corner location was depicted but there was no indication of a monument at the corner.

In July 2023, a DNR Survey Crew navigated to the area and searched the intersection of the east-west gravel road and North-South Highway 59. Found a strong magnetic attraction 10 feet east of the centerline of US Trunk Highway 59 and on the centerline of east-west gravel roads matching the coordinates provided by Mr. Marihardt. The position is in harmony historic records of the corner location. A Mag nail was set at the Marihardt position over the magnetic attraction.

After analysis of the above information, it was determined that the Mag nail set over the magnetic attraction is a perpetuation of the original government corner location.