

Doc# 281111 Fee: \$0.00 2 Pages

Property & Public Services  
Property Records Division  
Yellow Medicine County, Minnesota  
I hereby certify that the within instrument  
was filed on October 18, 2023 at 10:25 AM

Janel Timm, Yellow Medicine County Recorder

By Marit Nordang Deputy

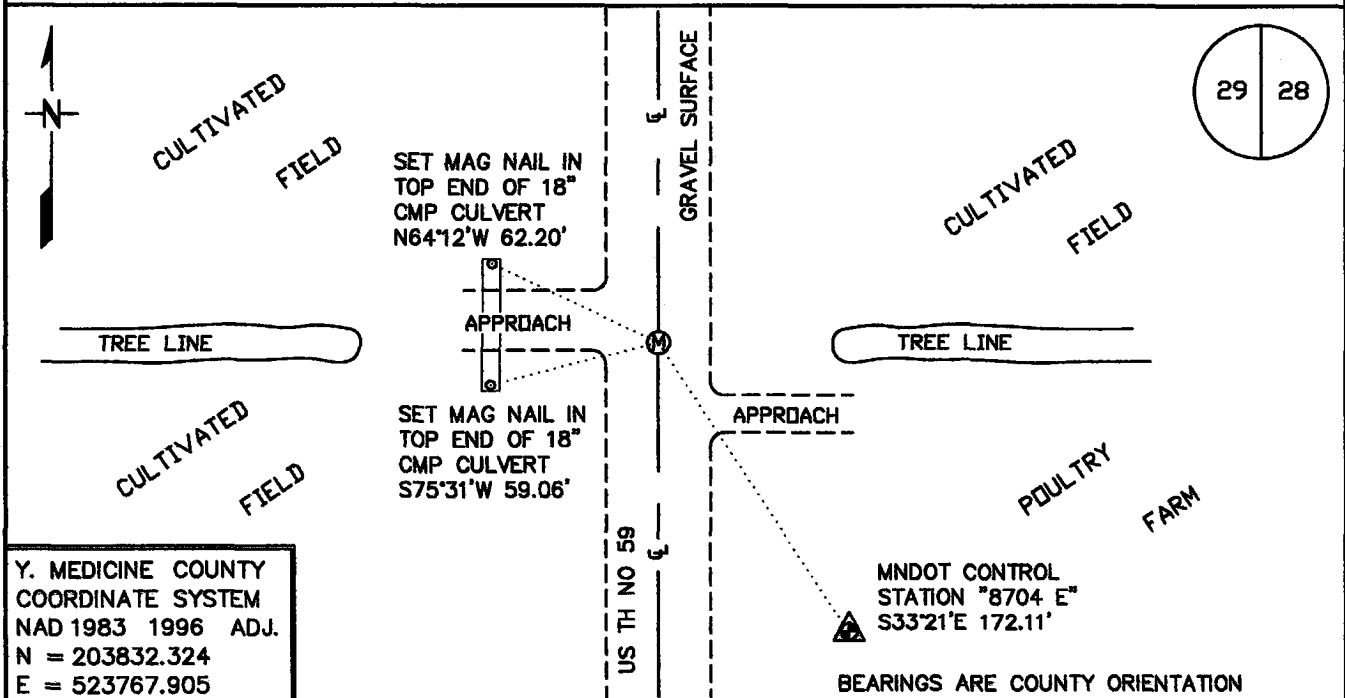
Index No. T-9

# CERTIFICATE OF LOCATION OF GOVERNMENT CORNER

EAST QUARTER Corner of Section 29, Township 116 N, Range 41 W  
5TH Principal Meridian, State of Minnesota, County of YELLOW MEDICINE

At the corner location shown on the sketch:

- On 7/19/2023 found a MAGNETIC ATTRACTION AT RECORD POSITION  
DATE
- left monument as found,  lowered monument,  removed monument (explain)
- On 7/20/2023 Placed a MAG NAIL AT RECORD POSITION OVER MAG ATTRACTION  
DATE



Y. MEDICINE COUNTY  
COORDINATE SYSTEM  
NAD 1983 1996 ADJ.  
N = 203832.324  
E = 523767.905

BEARINGS ARE COUNTY ORIENTATION

Statement of evidence for this corner location is on back of this page.

AUG 2023  
WMA01728

I hereby certify that this plan, specification, or report was prepared by me or under my direct supervision and that I am a duly Licensed Land Surveyor under the laws of the State of Minnesota.

SIGNATURE Robert A. Langner  
ROBERT A. LANGNER

DATE 10/10/2023

License Number 47461

## **STATEMENT OF EVIDENCE**

**East Quarter Corner of Section 29, Township 116 North, Range 41 West, 5<sup>th</sup> P.M.**

The following sources were contacted for information:

Roy Marihart, Marihart Surveying, P.A.  
Dan Buetel, Buetel-Moseng Land Surveying  
Yellow Medicine Recorders office  
Yellow Medicine Highway Department  
Minnesota History Center  
U of M Historical Aerial Photo Online Library  
MN Department of Transportation Right of Way Mapping and Monitoring Website

In 1865, GLO surveyors Edward Davis & Watson Webb set "Post in mound with pits."

Page 404 of the large Book of Surveys, located in the office of the Yellow Medicine County Recorder, contains a survey by County Surveyor, John Norgaard, dated June 1918. Mr. Norgaard notes "Located on Line. Left flag pole." Distances of 2564 feet are shown to the section corners north and south.

A 1938 historic aerial photo obtained from the U of M Historical Aerial Photo Online Library depicts a north-south road and east-west occupation at the presumed location of the corner.

A 1948 Minnesota DOT Right of Way Map from the Minnesota Department of Transportation Right of Way Mapping and Monitoring website indicates the corner is at the intersection of roads north-south road and at east-west fences, 1.2 feet east of centerline.

Roy Marihardt provided CAD files for work done in the area. A corner location was depicted but there was no indication of a monument at the corner.

In July 2023, a DNR Survey Crew navigated to the area and searched along the centerline of the Highway. They found a strong magnetic attraction at the Marihardt position near the centerline of Highway 59 and occupation lines east and west. A Mag Nail was set at the Marihardt position over the magnetic attraction. Distances of 2564.20 feet and 2567.01 feet were measured to the southeast and northeast corners of the section, respectively.

After analysis of the above information, it was determined that the Mag nail set over the magnetic attraction is in a perpetuation of the historic corner location.