

Doc# 281113 Fee: \$0.00 2 Pages  
 Property & Public Services  
 Property Records Division  
 Yellow Medicine County, Minnesota  
 I hereby certify that the within instrument  
 was filed on October 18, 2023 at 10:35 AM

Janel Timm, Yellow Medicine County Recorder

By Marit Nordang Deputy

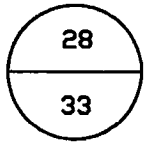
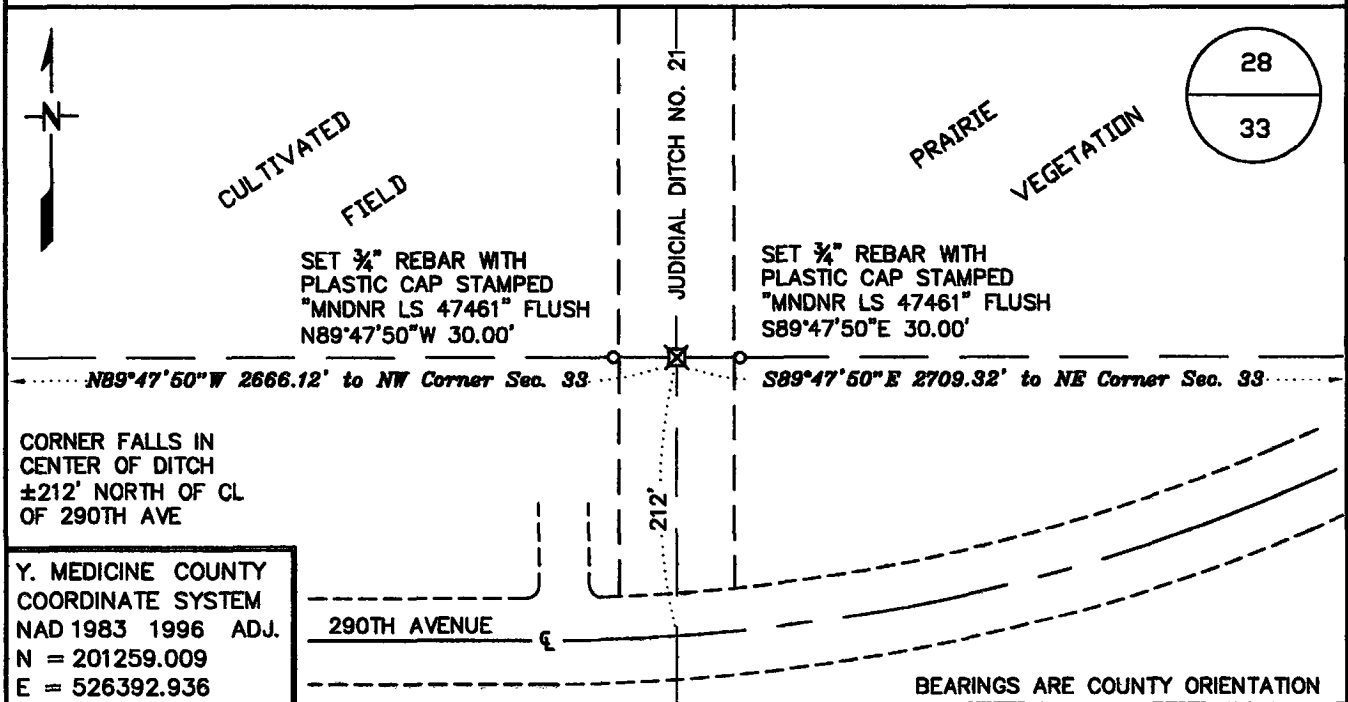
Index No. V-11

# CERTIFICATE OF LOCATION OF GOVERNMENT CORNER

NORTH QUARTER Corner of Section 33, Township 116 N, Range 41 W  
5TH Principal Meridian, State of Minnesota, County of YELLOW MEDICINE

At the corner location shown on the sketch:

- On \_\_\_\_\_ found a \_\_\_\_\_  
DATE
- left monument as found,  lowered monument,  removed monument (explain)
- On 7/20/2023 Placed a REFERENCE MONUMENTS NOTED BELOW  
DATE



CORNER FALLS IN  
 CENTER OF DITCH  
 ±212' NORTH OF CL  
 OF 290TH AVE

Y. MEDICINE COUNTY  
 COORDINATE SYSTEM  
 NAD 1983 1996 ADJ.  
 N = 201259.009  
 E = 526392.936

BEARINGS ARE COUNTY ORIENTATION

Statement of evidence for this corner location is on back of this page.

AUG 2023  
 WMA01728

I hereby certify that this plan, specification, or report was prepared by me or under my direct supervision and that I am a duly Licensed Land Surveyor under the laws of the State of Minnesota.

SIGNATURE Robert A. Langner DATE 10/10/2023 License Number 47461  
 ROBERT A. LANGNER

## **STATEMENT OF EVIDENCE**

**North Quarter Corner of Section 33, Township 116 North, Range 41 West, 5<sup>th</sup> P.M.**

The following sources were contacted for information:

Roy Marihart, Marihart Surveying, P.A.  
Dan Buetel, Buettel-Moseng Land Surveying  
Yellow Medicine Recorders office  
Yellow Medicine Highway Department  
Minnesota History Center  
U of M Historical Aerial Photo Online Library

In 1865, GLO surveyors Edward Davis & Watson Webb set post in mound with pits to mark the corner.

Page 404 of the large Book of Surveys, located in the office of the Yellow Medicine County Recorder, contains a survey by County Surveyor, John Norgaard, dated June 1918. Mr. Norgaard notes "Located on line between section corners and on fence line running south as set by Mr. Larson 25 years ago according to a survey made by county surveyor Feltman over 30 years ago." A distance of 2706 feet is shown to the northeast corner of Section 33 and a distance of 2663 feet is shown to the northwest corner of Section 33.

A 1938 historic aerial photo obtained from the U of M Historical Aerial Photo Online Library depicts occupations lines north-south of the presumed corner location. Additionally, it is in line with an extension of the road running east, and in line with an intersection of road a half mile west.

A ditch was constructed on the quarter line sometime after 1961, the last historical air photo analyzed. Construction of the ditch would have destroyed the corner monument.

Roy Marihardt provided CAD files for work done in the area along with a 2018 Certificate of Survey. A corner location was depicted but there was no indication of a monument set at the corner. It appears Marihart computed the corner at lost position proportioning Norgaard's 1918 survey.

In July 2023 a DNR survey crew navigated to the area to search for evidence. It was determined that the Marihardt position falls on line with the section corners east and west and in the center of the north-south ditch.

After analysis of the records and field information, it is presumed that the north-south ditch was constructed along the quarter line and the Marihardt position was accepted as the historic location of the quarter corner. Reference monuments were placed east and west of the corner position as depicted on the face of this document.