

I hereby certify that the within instrument
was filed on October 18, 2023 at 10:40 AM

Janel Timm, Yellow Medicine County Recorder

By Marit Nordang Deputy

Index No. V-13

CERTIFICATE OF LOCATION OF GOVERNMENT CORNER

NORTHEAST Corner of Section 33, Township 116 N, Range 41 W

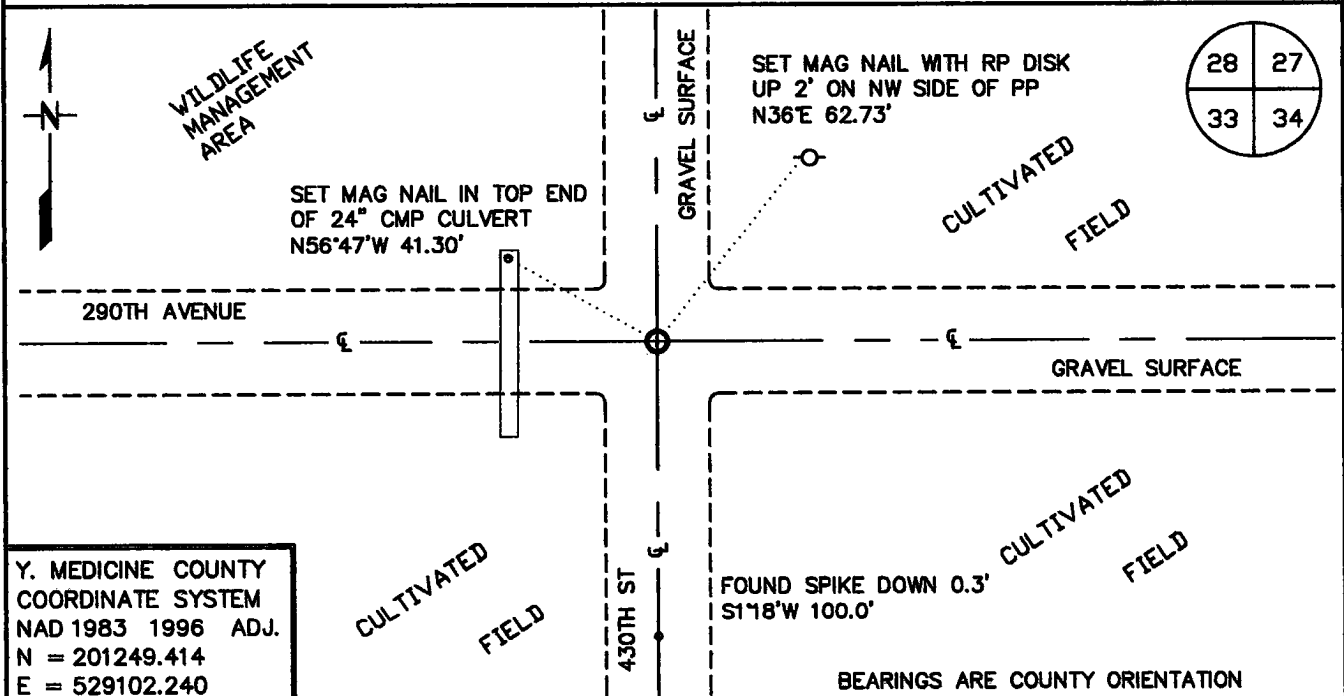
5TH Principal Meridian, State of Minnesota, County of YELLOW MEDICINE

At the corner location shown on the sketch:

■ On 7/19/2023 found a 60D COMMON SPIKE OVER OAK HUB REMAINS DOWN 1.0'
DATE

left monument as found, lowered monument, removed monument (explain)

■ On 8/16/2023 Placed a 3/4" X 18" REBAR WITH PLASTIC CAP STAMPED
DATE
"MN DNR LS 47461" DOWN 0.3' IN PLACE OF FOUND SPIKE



Statement of evidence for this corner location is on back of this page.

AUG 2023
WMA01728

I hereby certify that this plan, specification, or report was prepared by me or under my direct supervision and that I am a duly Licensed Land Surveyor under the laws of the State of Minnesota.

SIGNATURE Robert A. Langner
ROBERT A. LANGNER

DATE 10/10/2023

License Number 47461

STATEMENT OF EVIDENCE

Northeast Corner of Section 33, Township 116 North, Range 41 West, 5th P.M.

The following sources were contacted for information:

Roy Marihart, Marihart Surveying, P.A.
Dan Buetel, Buetel-Moseng Land Surveying
Yellow Medicine Recorders office
Yellow Medicine Highway Department
Minnesota History Center
U of M Historical Aerial Photo Online Library

In 1865, GLO surveyors Edward Davis & Watson Webb set post in mound with pits for corner to Sections 27, 28, 33, & 34.

Page 404 of the large Book of Surveys, located in the office of the Yellow Medicine County Recorder, contains a survey by County Surveyor, John Norgaard, dated June 1918. Mr. Norgaard notes "Found Jasper Monument in Road." A distance of 2706 feet is shown to the north quarter corner of section 33.

Page 69 of Book B of surveys in the Yellow Medicine County Recorder's office notes "Located at the intersection of roads running North, South, East, & West. Set top of Monument level with ground."

A 1938 historic aerial photo obtained from the U of M Historical Aerial Photo Online Library depicts a road intersection North, South, East and West at the presumed corner location.

An undated Plan and Profile drawing from Yellow Medicine County Highway department indicated a section corner used at the intersection of East-West County road and North-South Township Road with the following ties:

R.P. Cap in T.P.	49.1" SW
R.P. Cap in P.P.	77.9' NE
R.P. SPK in RD.	100.0' N. & S.

Roy Marihart provide CAD files for work done in the area. A 2018 Survey by him indicated a found corner monument.

In July 2023 a DNR Survey crew navigated to area and searched for ties and found a spike in the road intersection and another spike in the township road 100 feet south of intersection.

In August 2023 the DNR Survey crew returned with backhoe operator from the wildlife division and excavated a 8 foot x 10 foot hole to 6 foot in depth. Natural grade was found to be down approximately 4.5 feet. No additional evidence of the corner was recovered.

After analysis of the records and field information, it was determined that the spike was a perpetuation of the original government corner location. A ¾ inch rebar monument with cap was set in place of the found spike.