

Doc# 281549 Fee: \$0.00 2 Pages

Property & Public Services
Property Records Division
Yellow Medicine County, Minnesota
I hereby certify that the within instrument
was filed on January 2, 2024 at 10:45 AM

Janel Timm, Yellow Medicine County Recorder

By Delna Blood Deputy

CERTIFICATE OF LOCATION OF GOVERNMENT CORNER

North Quarter Corner of Section 18, Township 115, Range 40

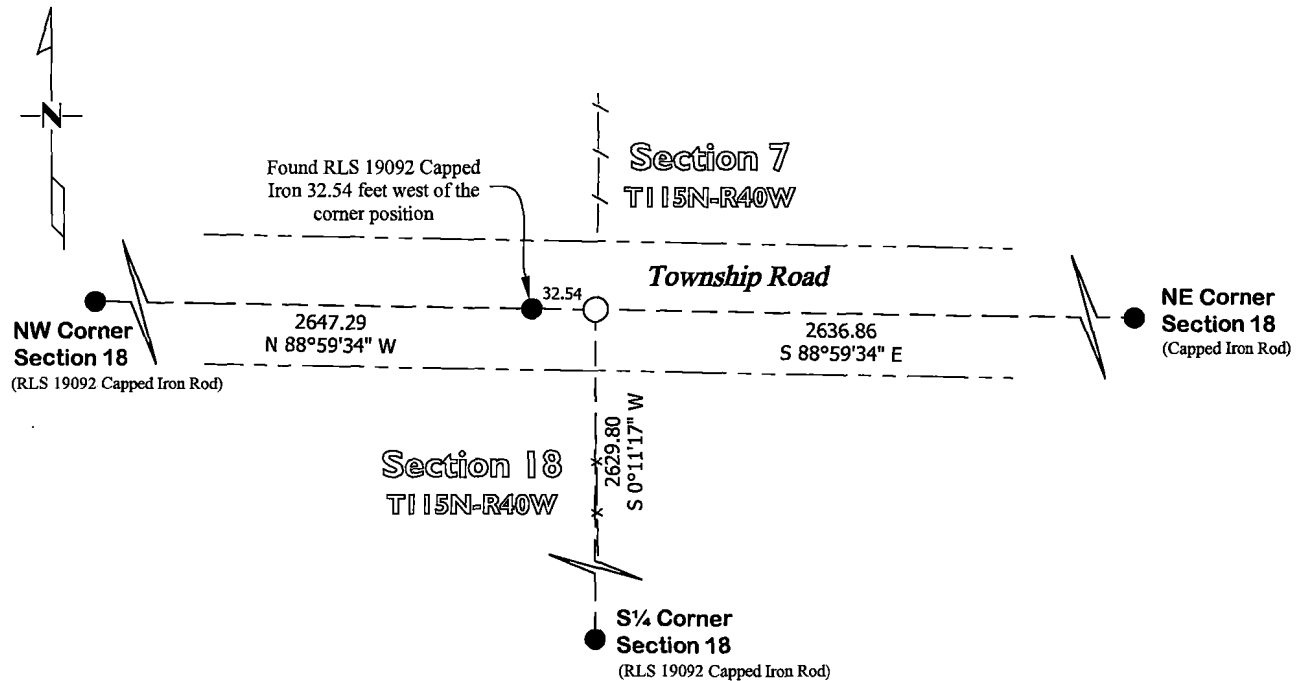
Fifth Principal Meridian, State of Minnesota, County of Yellow Medicine

At the corner location shown on the sketch:

On October 9, 2023 found No Existing Monumentation
DATE

left monument as found lowered monument removed monument (explain)

On December 19, 2023 placed a 5/8" x 18" Iron Rod with Plastic Cap stamped 46169 - 46171
DATE



Statement of evidence for this corner location is on back of this page.

I hereby certify that this survey, plan, or report was prepared by me or under my direct supervision and that I am a duly Licensed Land Surveyor under the laws of the state of Minnesota.

Signature

Matthew D. Runke
Matthew D. Runke

Date

12/27/23

Minnesota Registered Land Surveyor #46171

STATEMENT OF EVIDENCE

North Quarter Corner Section 18, T115N-R40W

- 1864 C.E. Davis and J.W. Webb Jr. were contracted by the United States Government Land Office to perform the Original Public Land Survey in this township. Davis and Webb record in their field notes that they "Set post in mound with pits for quarter section corner".
- 2008 Matthew D. Runke, LS 46171, while performing surveys in Section 7, notes a "Found Iron Monument" at this corner position.
- Date Unknown Roy Marihart, LS 19092, while performing a survey in Section 18, notes that he "Set ½" Rebar with Cap stamped RLS 19092" at a lost position for this corner.
- Dec. 19, 2023 Matthew D. Runke, LS 46171, found a LS 19092 capped iron monument near this corner position. There is no record of the perpetuation of this corner position from when it was set as part of the Original Government Land Office Survey in 1864 until 2008. In 2008, I had located a metal attraction near this corner position, however, we were unable to recover this, or any other metal attraction near this corner position as part of our current survey work. The capped iron monument placed by Marihart was set at a lost position, 32.54 feet west of the historical fence line running south of this corner position. No large scale excavation was performed at this corner position. After review of the occupation lines in Sections 7 and 18, along with historical aerial photos back to the 1930's, it was determined the historical fence line to the south of this corner indicated the east-west location of this corner position. This position fits well with the Original Government Land Office Survey distance from the northeast corner of this Section (40 chains). A 5/8" x 18" rebar with a plastic cap stamped "46169-46171" was placed on-line between the northeast and northwest corners of this section and in-line with a historical fence line to the south. This position fits well with a tillage line to the north, the centerline of the east-west road and the former location of the north-south field line on the east line of the W½ of the NE¼.