

Property & Public Services  
Property Records Division  
Yellow Medicine County, Minnesota  
I hereby certify that the within instrument  
was filed on August 28, 2024 at 10:15 AM

Janei Timm, Yellow Medicine County Recorder

By Marit Nordang DeputyIndex No. V-5

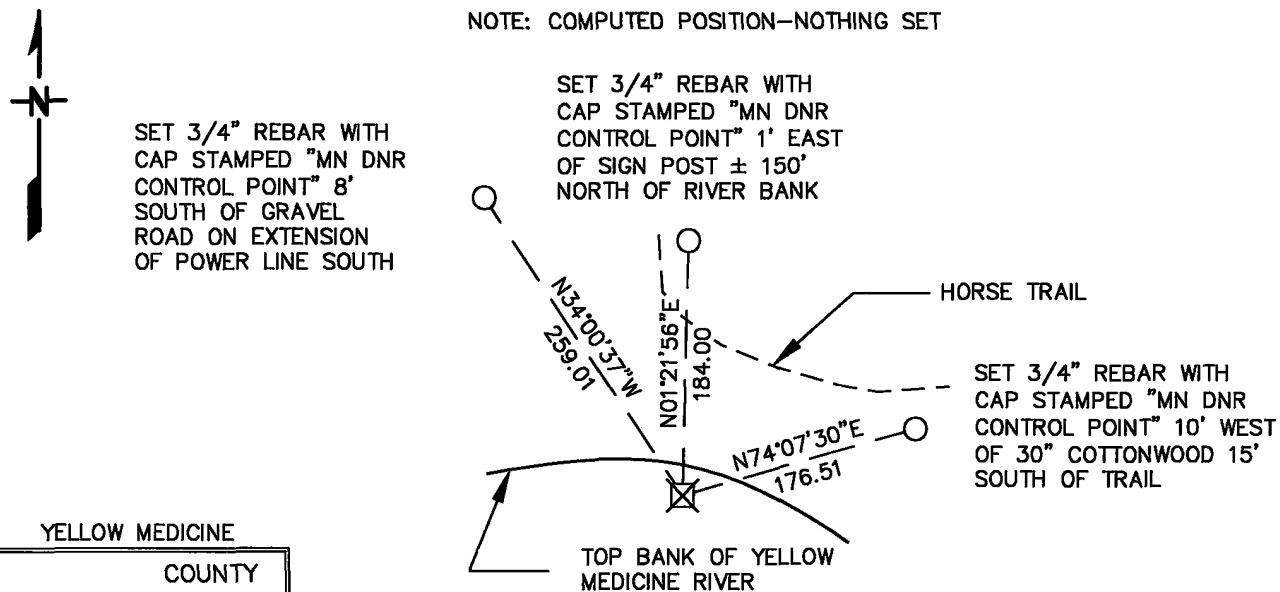
## CERTIFICATE OF LOCATION OF GOVERNMENT CORNER

NORTHEASTCorner of Section 31, Township 115 N, Range 38 W5TH Principal Meridian, State of Minnesota, County of YELLOW MEDICINE

At the corner location shown on the sketch:

- ☐ On \_\_\_\_\_ found a \_\_\_\_\_  
DATE \_\_\_\_\_
- ☐ left monument as found, ☐ lowered monument, ☐ removed monument (explain)
- ☐ On \_\_\_\_\_ Placed a \_\_\_\_\_  
DATE \_\_\_\_\_

NOTE: COMPUTED POSITION—NOTHING SET



YELLOW MEDICINE

COUNTY  
COORDINATE SYSTEM  
NAD 1983 1986 ADJ.  
N = 169326.38  
E = 613969.62

BEARINGS ARE PER COUNTY  
NAD 83, 1986 ADJUSTMENT

Statement of evidence for this corner location is on back of this page.

AUGUST 2024  
SPK00277

I hereby certify that this plan, specification, or report was prepared by me or under my direct supervision and that I am a duly Licensed Land Surveyor under the laws of the State of Minnesota.

SIGNATURE

Joseph J. Flisch

DATE

8/26/24

License Number

44974

**Northeast Corner Section 31, Township 115 North, Range 38 West**

The Department of Natural Resources, Division of Lands and Minerals, contacted the following offices for information regarding this corner:

Minnesota Historical Society  
Minnesota Department of Transportation  
Bueltel-Moseng Land Surveying, Inc.  
Yellow Medicine County Recorder's Office

For previous history see Certificate Document No. 210274 dated November 7, 1995.

2024 In September the Department of Natural Resources survey crew searched for the corner but found nothing. The vicinity of the corner location has been eroded and falls within the riverbank of the Yellow Medicine River. None of the ties were found per the previous Certificate and are now located within said riverbank. We were able to use the same coordinate from the previous 1996 DNR survey to establish the corner. The coordinate system is NAD 1983, 1986 Adjustment. The position was accepted as marking the location, but nothing was set as it falls within said riverbank. New ties were established.

South Quarter corner Section 30 bears	N87-12-12W	2679.90
East Quarter corner Section 30 bears	N02-03-36W	2681.10



## Minnesota Licensed Land Surveyors and Their License Numbers

License #	Last Name	First Name	Middle Name	Suffix	Date LS # First Issued
44124	Streitz	David	Douglas		5/25/2005
44125	Vickaryous	Eric	Roy		5/25/2005
44146	Burrell	Robert	Don		6/3/2005
44196	Mcfarlane	Michael	C		12/26/2008
44360	Bollman	Shannon	Sue		7/13/2005
44488	Boschetti	Dennis	Alvin		11/28/2005
44489	Fairchild	Paul	E		11/28/2005
44490	Kroschel	Tyler	Joseph		11/28/2005
44493	Jahner	Mark	Frederick		12/1/2005
44522	Slivensky	Steven	James		12/7/2005
44529	Heiling	Russell	John		12/28/2005
44530	Johnson	Craig	Edward		12/28/2005
44531	Mccoy	Trace	C		12/28/2005
44563	Zeff	Thomas	Victor		12/22/2005
44565	Synstelien	Rory	Logan		12/29/2005
44605	Bushman	Joe	Louis		1/11/2006
44606	Klasen	Kyle	Lee		1/11/2006
44646	Praske	Brian	Eugene		1/13/2006
44647	Pittmann	Jonathan	M		1/13/2006
44655	Schneider	Joshua	Peter		1/18/2006
44866	Fletchall	Michael	L		6/9/2006
44867	Schlieman	James	A		6/9/2006
44869	Johnson	Todd	Richard		6/12/2006
44879	Conaway	Jeff	D		7/3/2006
44880	Gibson	Samuel	D		7/3/2006
44881	Hidde	Cynthia	Myla		7/3/2006
44890	Carlson	Leonard	F		7/6/2006
44891	Taylor	Jerry	D		7/6/2006
44900	Carlson	Arlee	John		7/7/2006
44901	Gitzen	Peter	D		7/7/2006
44902	Major	Jeffrey	P		7/7/2006
44903	Tarasar	Susan	M		7/7/2006
44974	Fleisher	Joseph	L		7/11/2006
44975	Lord	Kevin	G		7/11/2006
44976	Dowell	Preston			7/11/2006
44996	Zeig	Jesse	Daniel		7/14/2006
45025	Tokarczyk	Paul	Robert		7/2/2010
45331	Towne	Jason	E		12/12/2006
45332	Peterson	Timothy	Scott		12/12/2006
45333	Danielson	Bradley	J		12/12/2006
45334	Wamre	Ross	R		12/12/2006
45335	Nyberg	Eric	G		12/12/2006
45351	Dodge	Ty	Richard		12/18/2006
45352	Schuette	Jonathan	Dwain		12/18/2006
45353	Hendershott	Corey	James		12/18/2006
45356	Nelson	Kurt	D		12/20/2006
45365	Borowicz	Garrett	R		12/14/2006
45368	Helgerson	Tharen	J		12/14/2006