

# CERTIFICATE OF LOCATION OF GOVERNMENT CORNER

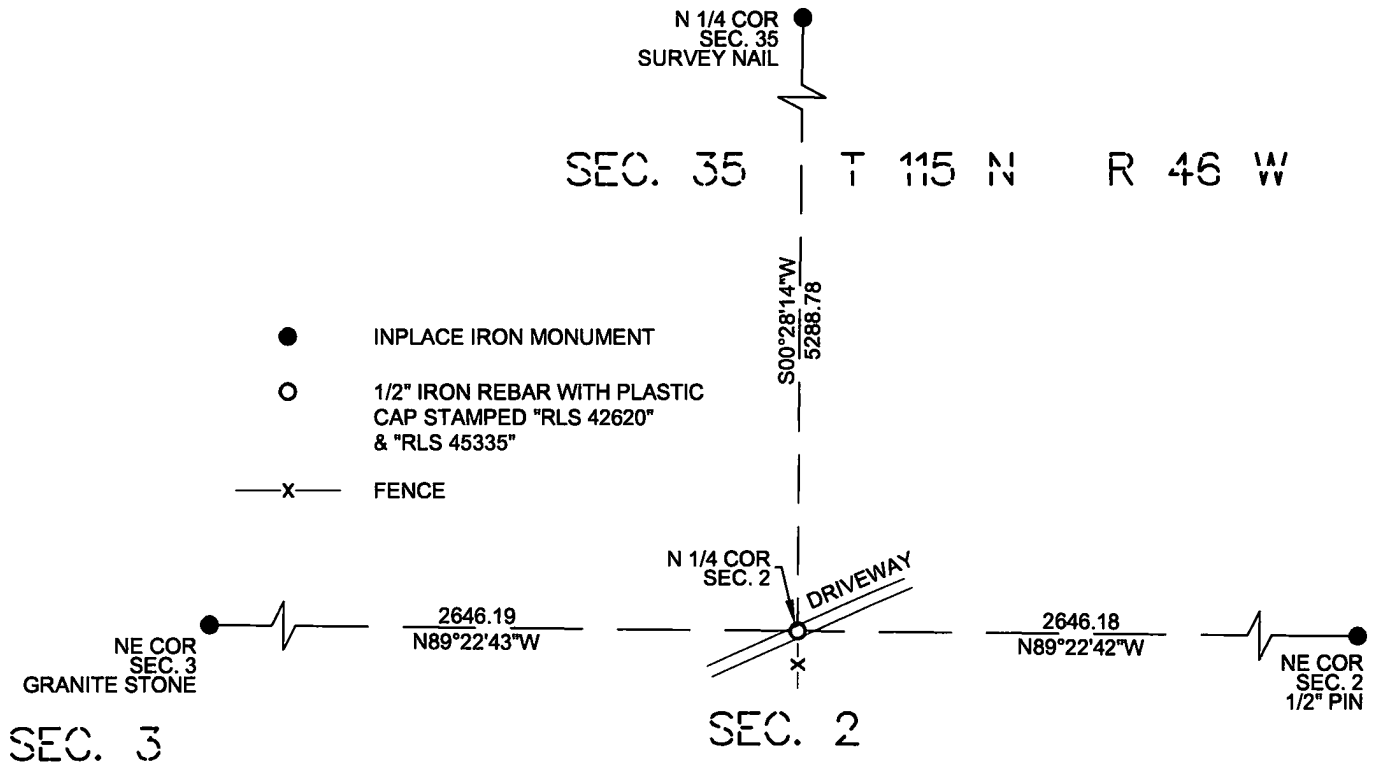
N 1/4 Corner of Section 2, Township 114 North, Range 46 West of the 5th P.M. State of Minnesota, County of Yellow Medicine.

At the corner location shown on the sketch:


On \_\_\_\_\_ found a \_\_\_\_\_

On 6/24/2024 placed a 1/2" x 18" iron rebar with a plastic cap stamped "RLS 42620 & RLS 45335".

## SKETCH OF REFERENCE TIES



I hereby certify that this survey, plan, report was prepared by me or under my direct supervision and that I am a duly Registered Land Surveyor under the laws of the State of Minnesota.

  
Eric G. Nyberg

Date October 10th, 2024 License No. 45335

Doc# 283072 Fee: \$0.00 2 Pages

Property & Public Services  
Property Records Division  
Yellow Medicine County, Minnesota  
I hereby certify that the within instrument was filed on October 17, 2024 at 10:30 AM

Janel Timm, Yellow Medicine County Recorder

By Marit Nordang Deputy

Statement of evidence for this corner position is on the back of this page

(FILE NO. 12054-2)

## STATEMENT OF EVIDENCE

North Quarter Corner of Section 2, Township 114 North, Range 46 West, Yellow Medicine County, Minnesota.

Nyberg Surveying Contacted the following offices for survey information on this corner:

MN Secretary of State  
Yellow Medicine County Records Office  
Yellow Medicine County Highway Department  
Minnesota Department of Transportation  
Marihart Land Surveying  
Bueltel Moseng Land Surveying

- 1858 The U.S. General Land Office field notes, on file in the MN Secretary of State's Office, describe this original corner as set a post for 1/4 section corner and raised mound as per instructions.
- 2024 Field computations provided by Roy Marihart indicates an old fence post at a fence intersection north, south and east that was found at this location. Trunk Highway No. 68 alignment plan indicates a PI for the curve being on the south line of Section 35. Nothing was found at the location of the corner due to the construction of a driveway. A 1/2" rebar stamped RLS 45335 and 42620 was set online and equal distance between the Southeast and Southwest corners of Section 35. This position fits well with the Marihart measurements and the 1" shaft at the location of the P.I. was also found to lie on a straight line between the Southeast and Southwest corners of Section 35.

Yellow Medicine County Coordinates  
NAD 83, 1996 Adjustment  
N 164618.9109  
E 378020.1373