

CERTIFICATE OF LOCATION OF GOVERNMENT CORNER

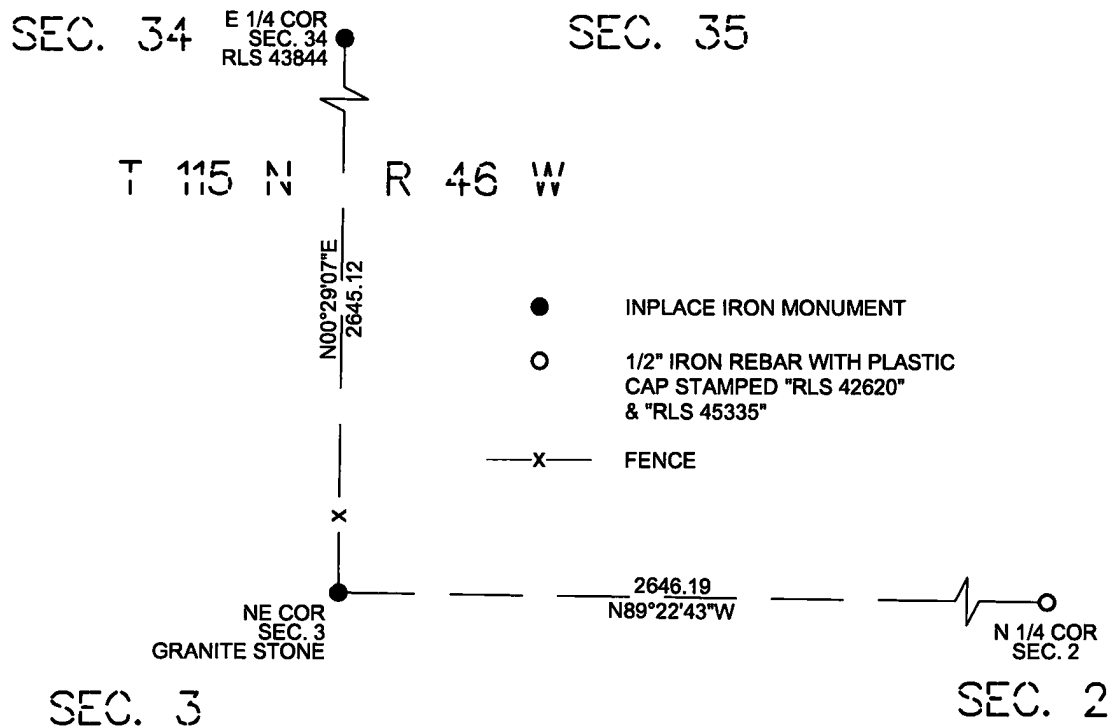
NE Corner of Section 3, Township 114 North, Range 46 West of the 5th P.M. State of Minnesota, County of Yellow Medicine.

At the corner location shown on the sketch:

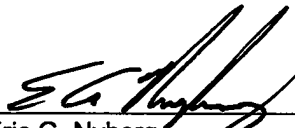
On 6/24/2024 found a Granite Stone.

On 6/24/2024 placed a left as is.

SKETCH OF REFERENCE TIES



I hereby certify that this survey, plan, report was prepared by me or under my direct supervision and that I am a duly Registered Land Surveyor under the laws of the State of Minnesota.


Eric G. Nyberg

Date October 10th, 2024 License No. 45335

Doc# 283074 Fee: \$0.00 2 Pages

Property & Public Services
Property Records Division
Yellow Medicine County, Minnesota
I hereby certify that the within instrument was filed on October 17, 2024 at 10:30 AM

Janel Timm, Yellow Medicine County Recorder

By Marit Nordang Deputy

Statement of evidence for this corner position is on the back of this page

(FILE NO. 12054-2)

STATEMENT OF EVIDENCE

Northeast Corner of Section 3, Township 114 North, Range 46 West, Yellow Medicine County, Minnesota.

Nyberg Surveying Contacted the following offices for survey information on this corner:

MN Secretary of State
Yellow Medicine County Records Office
Yellow Medicine County Highway Department
Minnesota Department of Transportation
Marihart Land Surveying
Bueltel Moseng Land Surveying

- 1858 The U.S. General Land Office field notes, on file in the MN Secretary of State's Office, describe this original corner as set a post for corner to sections 2, 3, 34 & 35 and raised mound as per instructions.
- 2016 A survey done by Roy Marihart dated October 24, 2016, shows a found corner monument at this location.
- 2017 A survey done by Daniel Bueltel dated October 4, 2017, shows a found 6" x 6" stone monument at this location
- 2024 A granite stone was located and fit well with a fence running north and the centerline of 140th street running north from Trunk Highway No. 68. Ties to this corner matched the Marihart and Bueltel Surveys. The granite stone was accepted as the Northeast Corner of Section 3.

Yellow Medicine County Coordinates
NAD 83, 1996 Adjustment
N 164647.6131
E 375374.1071